

---

Subject: Why can't I view my level edit mod folders?  
Posted by [reborn](#) on Fri, 29 Nov 2013 21:07:45 GMT  
[View Forum Message](#) <> [Reply to Message](#)

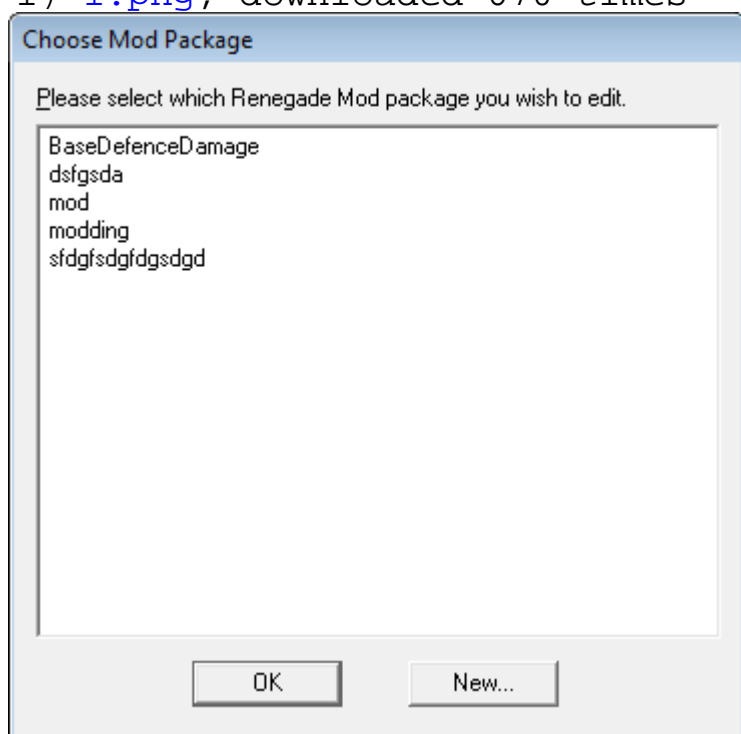
---

I installed renegade public tools, but I can't see my mod folders when I open the level edit folder. However, when I am in level edit I can click on "save as" and browse to see the folders, but they have a lock symbol on them. It's pretty weird:

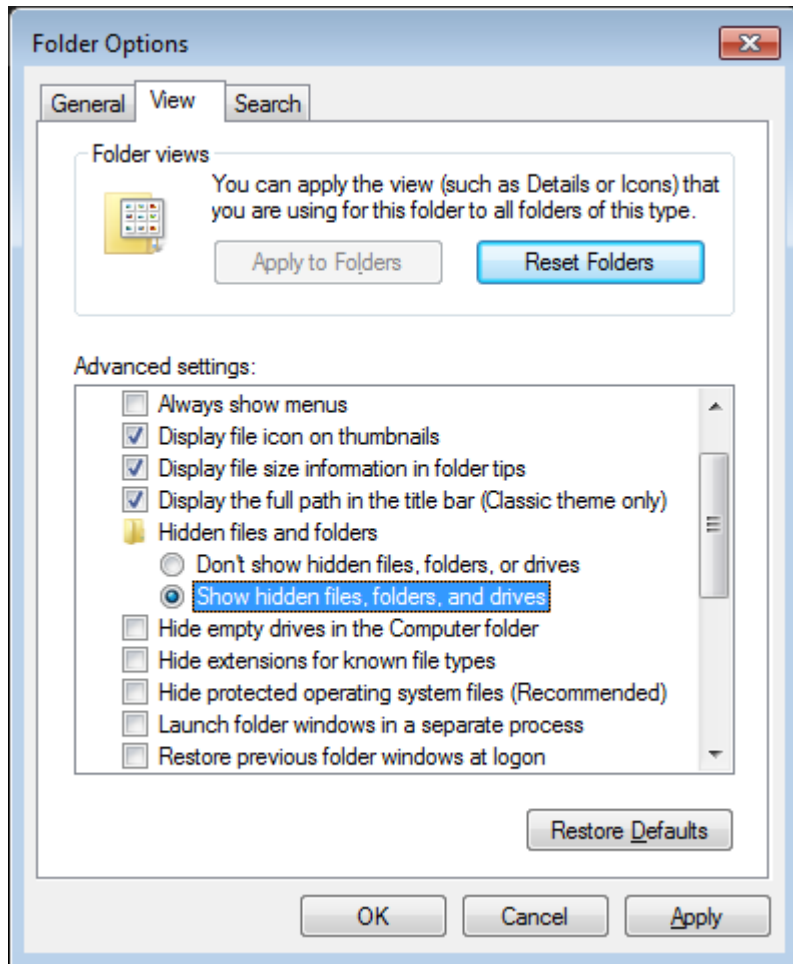
---

## File Attachments

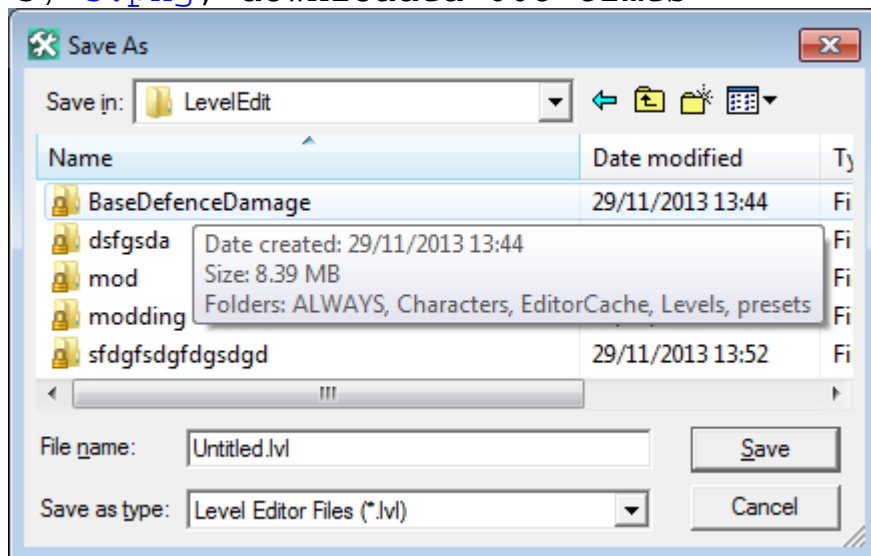
1) [1.png](#), downloaded 670 times



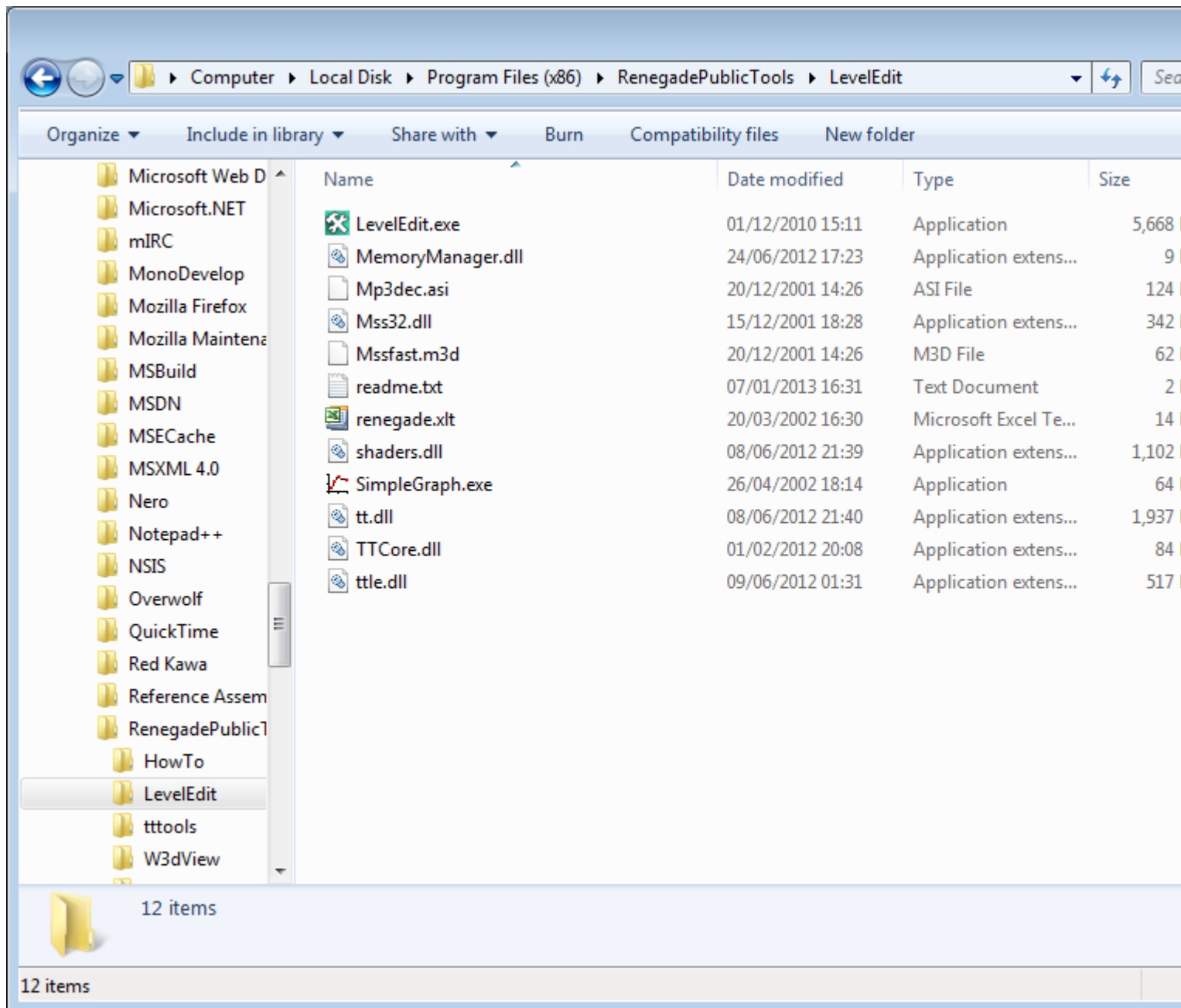
2) [2.png](#), downloaded 670 times



3) [3.png](#), downloaded 668 times



4) [4.png](#), downloaded 657 times




---

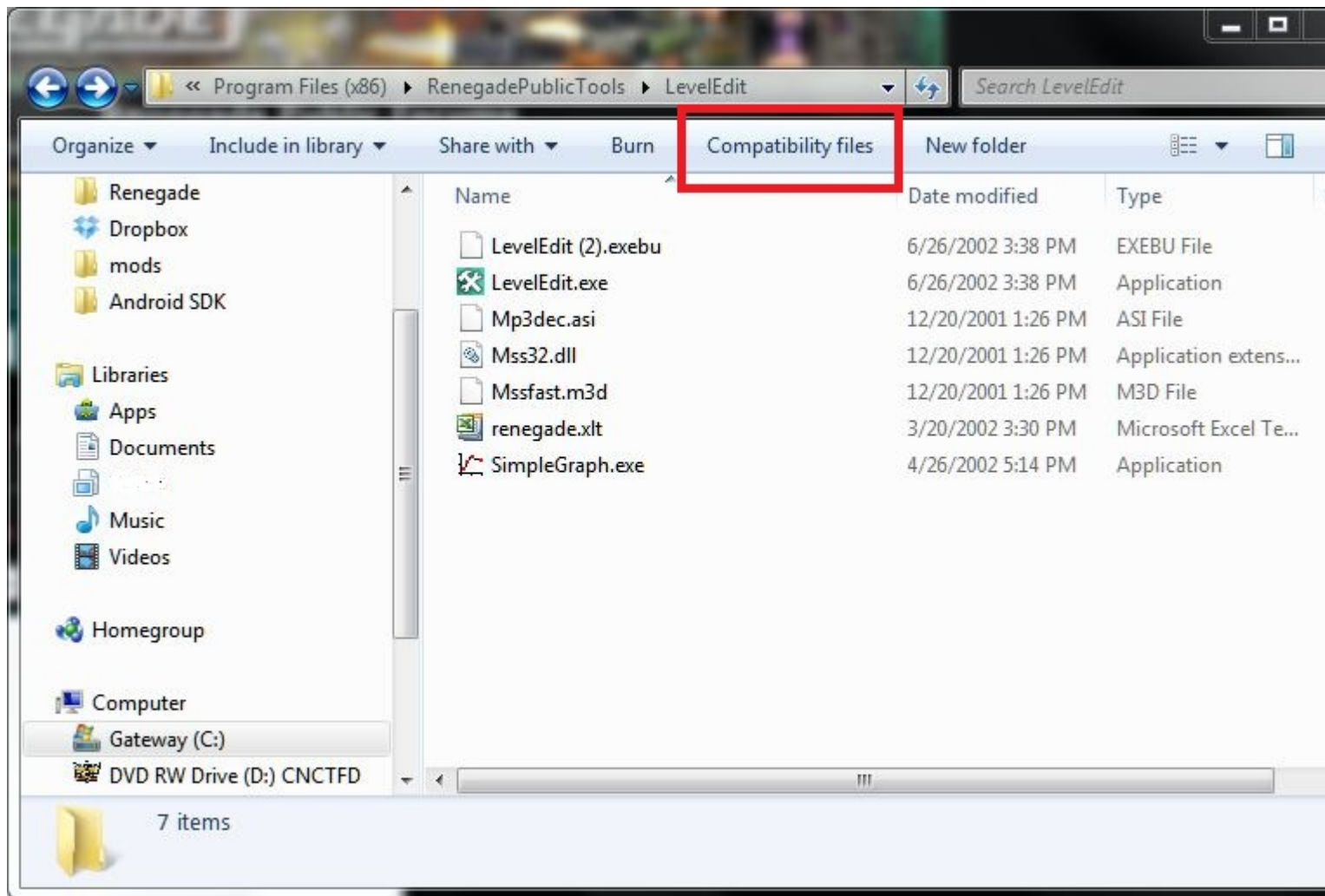
Subject: Re: Why can't I view my level edit mod folders?  
 Posted by [YazooGang](#) on Fri, 29 Nov 2013 21:17:12 GMT  
[View Forum Message](#) <> [Reply to Message](#)

---

Go to a desired folder (in this case LevelEdit) and click this button:

### File Attachments

1) [Capture.JPG](#), downloaded 734 times



---

Subject: Re: Why can't I view my level edit mod folders?  
Posted by [Gen\\_Blacky](#) on Fri, 29 Nov 2013 21:43:07 GMT  
[View Forum Message](#) <> [Reply to Message](#)

---

turn off uac.

---

---

Subject: Re: Why can't I view my level edit mod folders?  
Posted by [reborn](#) on Fri, 29 Nov 2013 22:23:57 GMT  
[View Forum Message](#) <> [Reply to Message](#)

---

Thanks for the tips guys, I'll give it a try.  
First time it's ever happened to me.

//Edit

Thanks guys, compat view worked. It takes me tot he virtual app data foldfer where Windows has

now decided to store this data.

Just a tip in case anyone else ever reads this thread. Open level edit with "Run as Administrator" and it will now create these folders in the same directory as level edit and you wont have to mess around with compatibility view and the virtual app data folders.

---

---

Subject: Re: Why can't I view my level edit mod folders?  
Posted by [saberhawk](#) on Sat, 30 Nov 2013 00:03:29 GMT  
[View Forum Message](#) <> [Reply to Message](#)

---

Or just put LevelEdit somewhere it can write files in the first place, like not "Program Files".

---