
Subject: Le Help

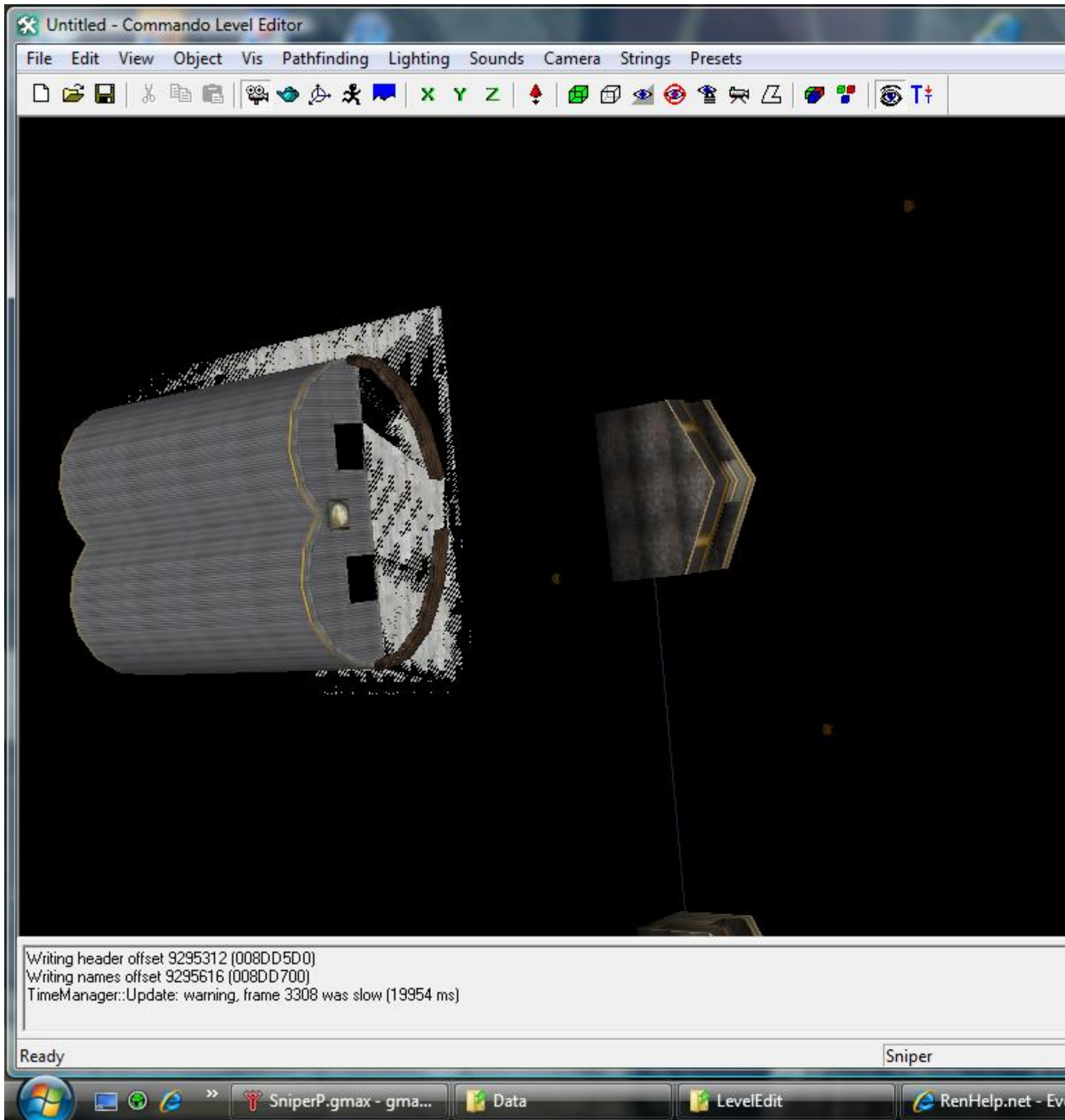
Posted by [Good-One-Driver](#) on Fri, 02 Oct 2009 03:01:56 GMT

[View Forum Message](#) <> [Reply to Message](#)

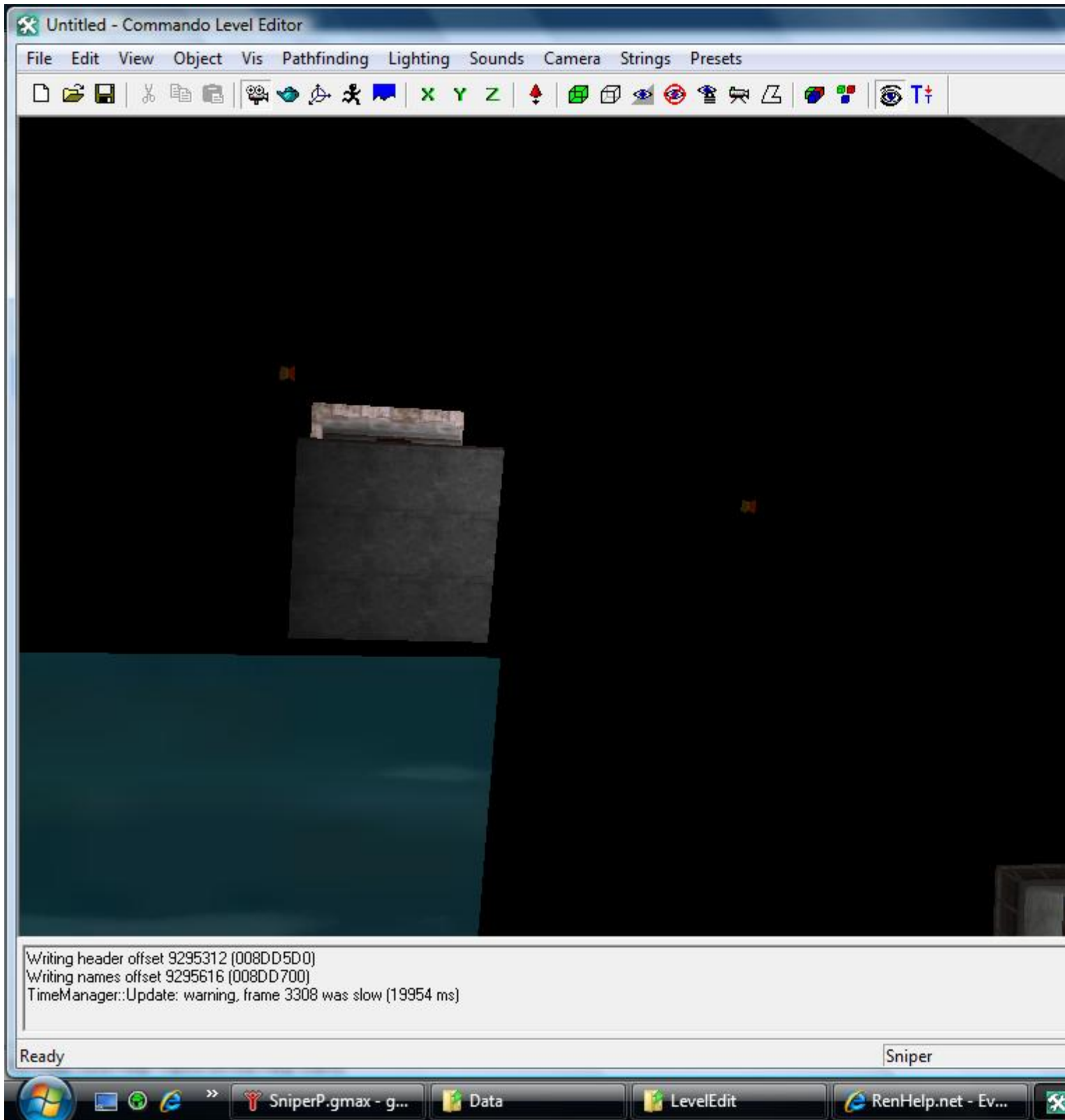
ok i got the rest of it figured out now LE part lol how do i move around and how do i do this?
Thanks In Advance

File Attachments

1) [map.jpg](#), downloaded 778 times



2) [map2.jpg](#), downloaded 786 times



Writing header offset 9295312 (008DD5D0)
Writing names offset 9295616 (008DD700)
TimeManager::Update: warning, frame 3308 was slow (19954 ms)

Subject: Re: Le Help
Posted by [LeeumDee](#) on Fri, 02 Oct 2009 05:50:54 GMT

[View Forum Message](#) <> [Reply to Message](#)

Press F5, and use your mouse.

Right click plus moving your mouse forward/backwards zooms.

Left click plus dragging your mouse in any direction; moves in that direction.
