
Subject: Uploading Texture To Map

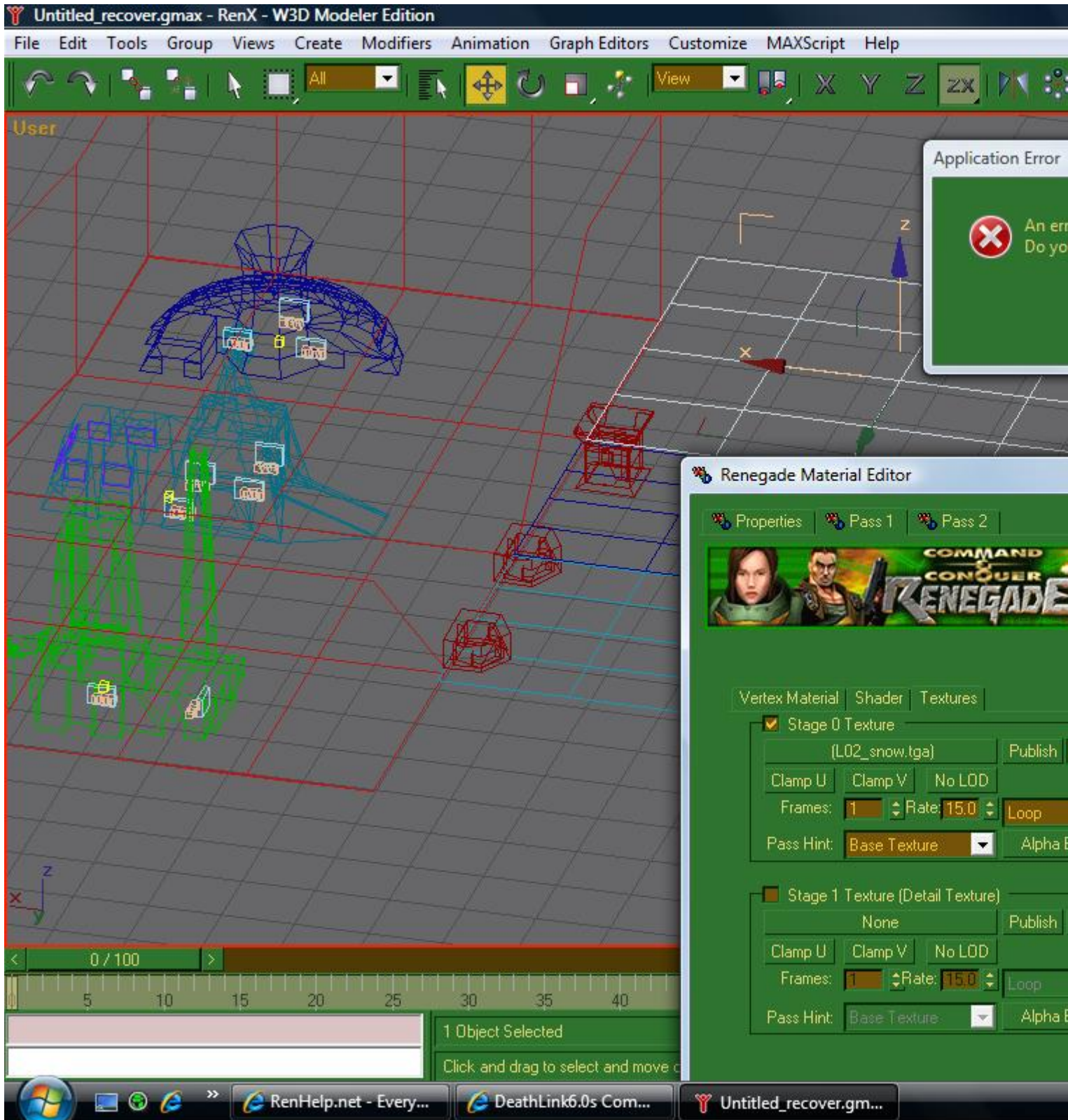
Posted by [Good-One-Driver](#) on Mon, 28 Sep 2009 04:40:01 GMT

[View Forum Message](#) <> [Reply to Message](#)

Ok so i decided to make my first map but i am having trouble uploading texture to any part of the map can some one tell me why
i keep getting this strange error please some one tell me why and help

File Attachments

1) [help.jpg](#), downloaded 936 times



Subject: Re: Uploading Texture To Map
Posted by [Gen_Blacky](#) on Mon, 28 Sep 2009 05:44:10 GMT

[View Forum Message](#) <> [Reply to Message](#)

go to material navigator and give the mesh no material.

Subject: Re: Uploading Texture To Map

Posted by [Good-One-Driver](#) on Mon, 28 Sep 2009 05:50:13 GMT

[View Forum Message](#) <> [Reply to Message](#)

Gen_Blacky wrote on Mon, 28 September 2009 00:44go to material navigator and give the mesh no material.

Wait wait still noob were is this?

Subject: Re: Uploading Texture To Map

Posted by [Gen_Blacky](#) on Mon, 28 Sep 2009 05:53:11 GMT

[View Forum Message](#) <> [Reply to Message](#)

go to user interface and look for it. i don't have renx or 3ds max installed so i cant look.

Subject: Re: Uploading Texture To Map

Posted by [Good-One-Driver](#) on Mon, 28 Sep 2009 06:03:17 GMT

[View Forum Message](#) <> [Reply to Message](#)

Ok thank you

Subject: Re: Uploading Texture To Map

Posted by [Spyder](#) on Mon, 28 Sep 2009 06:37:13 GMT

[View Forum Message](#) <> [Reply to Message](#)

Gen_Blacky wrote on Mon, 28 September 2009 07:44go to material navigator and give the mesh no material.

You could have told him to just press 'M'.

Subject: Re: Uploading Texture To Map

Posted by [ErroR](#) on Mon, 28 Sep 2009 12:07:45 GMT

[View Forum Message](#) <> [Reply to Message](#)

DimitryK wrote on Mon, 28 September 2009 09:37Gen_Blacky wrote on Mon, 28 September 2009 07:44go to material navigator and give the mesh no material.

You could have told him to just press 'M'.

um, no that's the material editor, material navigator is that button with 3 circles (yellow, red, blue) in the top right corner of the screen. open it, then drag and drop the 'None' Material to the mesh

Subject: Re: Uploading Texture To Map

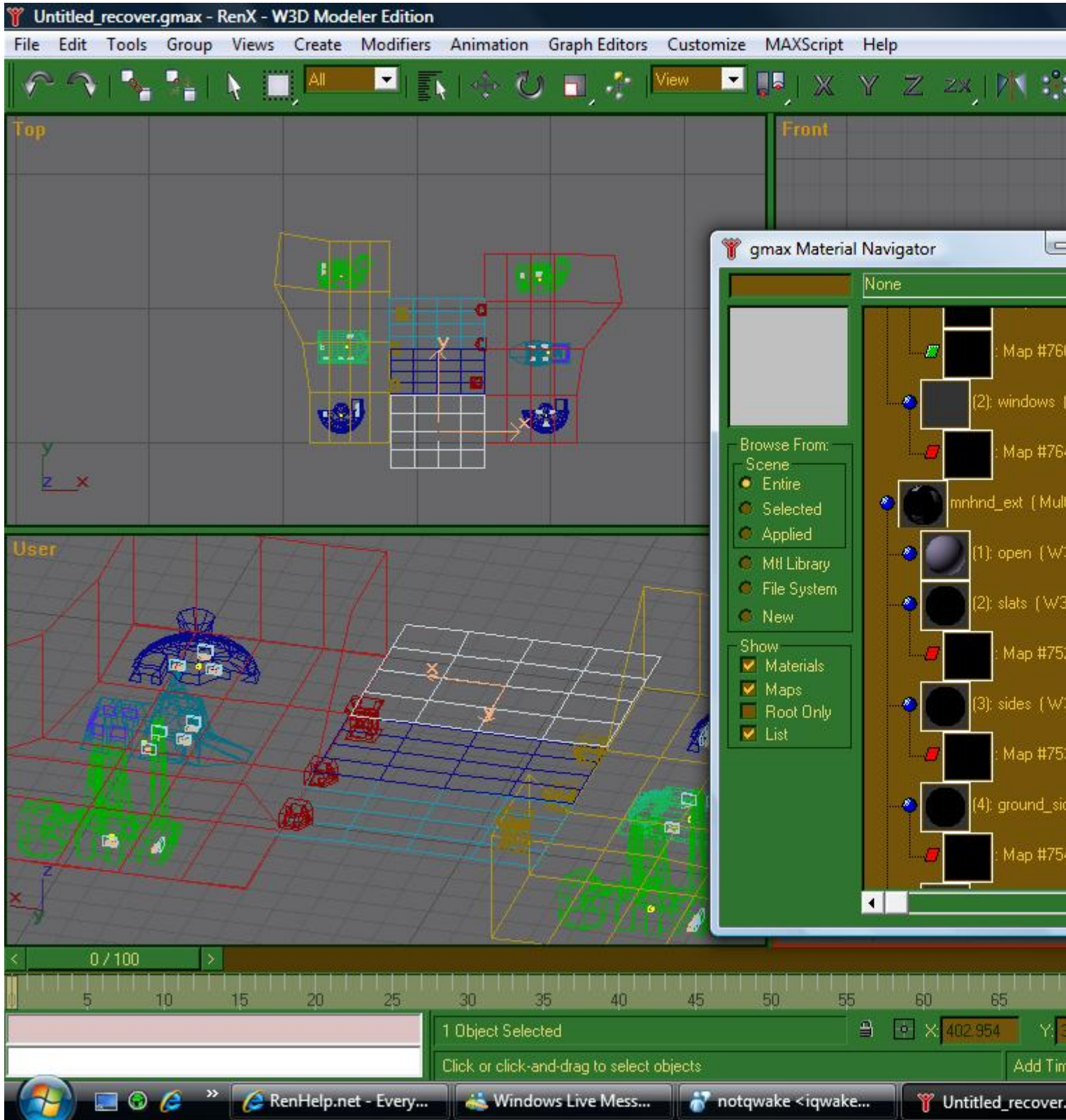
Posted by [Good-One-Driver](#) on Tue, 29 Sep 2009 01:44:42 GMT

[View Forum Message](#) <> [Reply to Message](#)

EDIT: i got the texture uploaded

File Attachments

1) [help2.jpg](#), downloaded 431 times



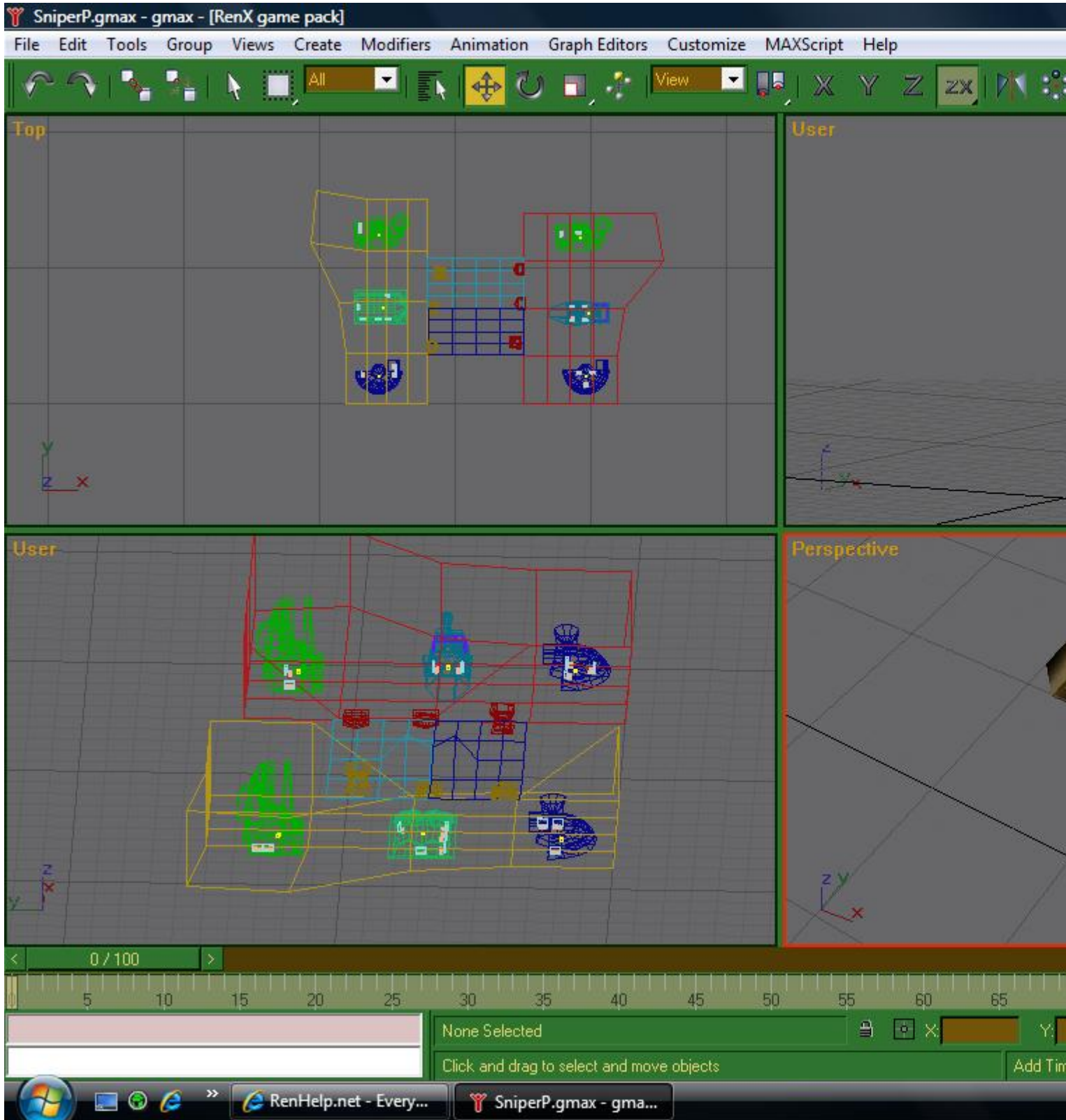
Subject: Re: Uploading Texture To Map
Posted by [Good-One-Driver](#) on Tue, 29 Sep 2009 03:42:00 GMT

[View Forum Message](#) <> [Reply to Message](#)

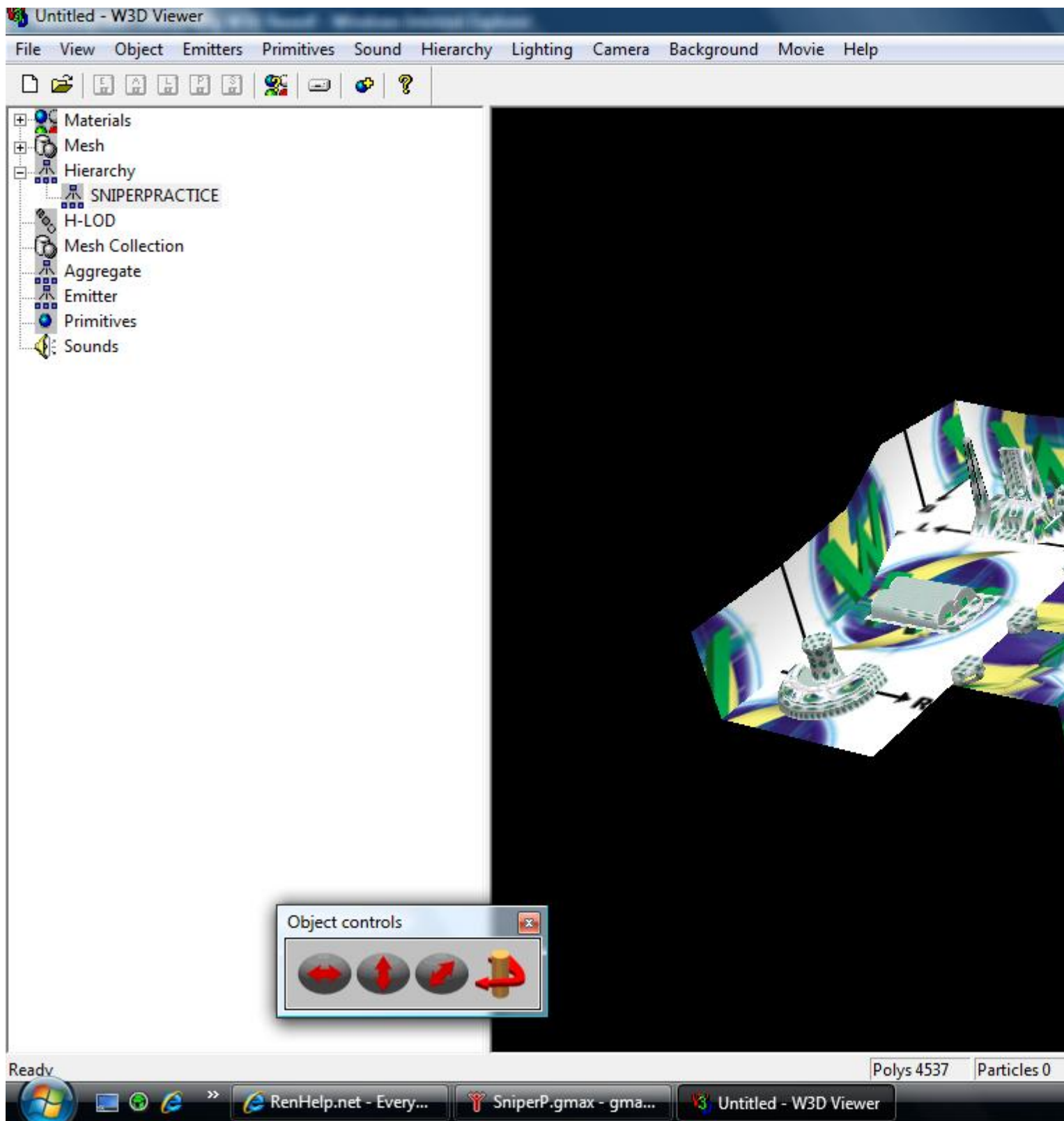
ok so i see the texture in renx but when i try seeing it in w3d viewer not work?

File Attachments

1) [ok.jpg](#), downloaded 656 times



2) [ok2.jpg](#), downloaded 653 times



Subject: Re: Uploading Texture To Map
Posted by [E!](#) on Tue, 29 Sep 2009 11:06:26 GMT

[View Forum Message](#) <> [Reply to Message](#)

your texture should be a *.tga file format (or *.dds) and it has to be in the same folder as the *.w3d is. you can open the materials tab in w3d viewer to check if the viewer finds the material or not and if it is able to display.

Subject: Re: Uploading Texture To Map

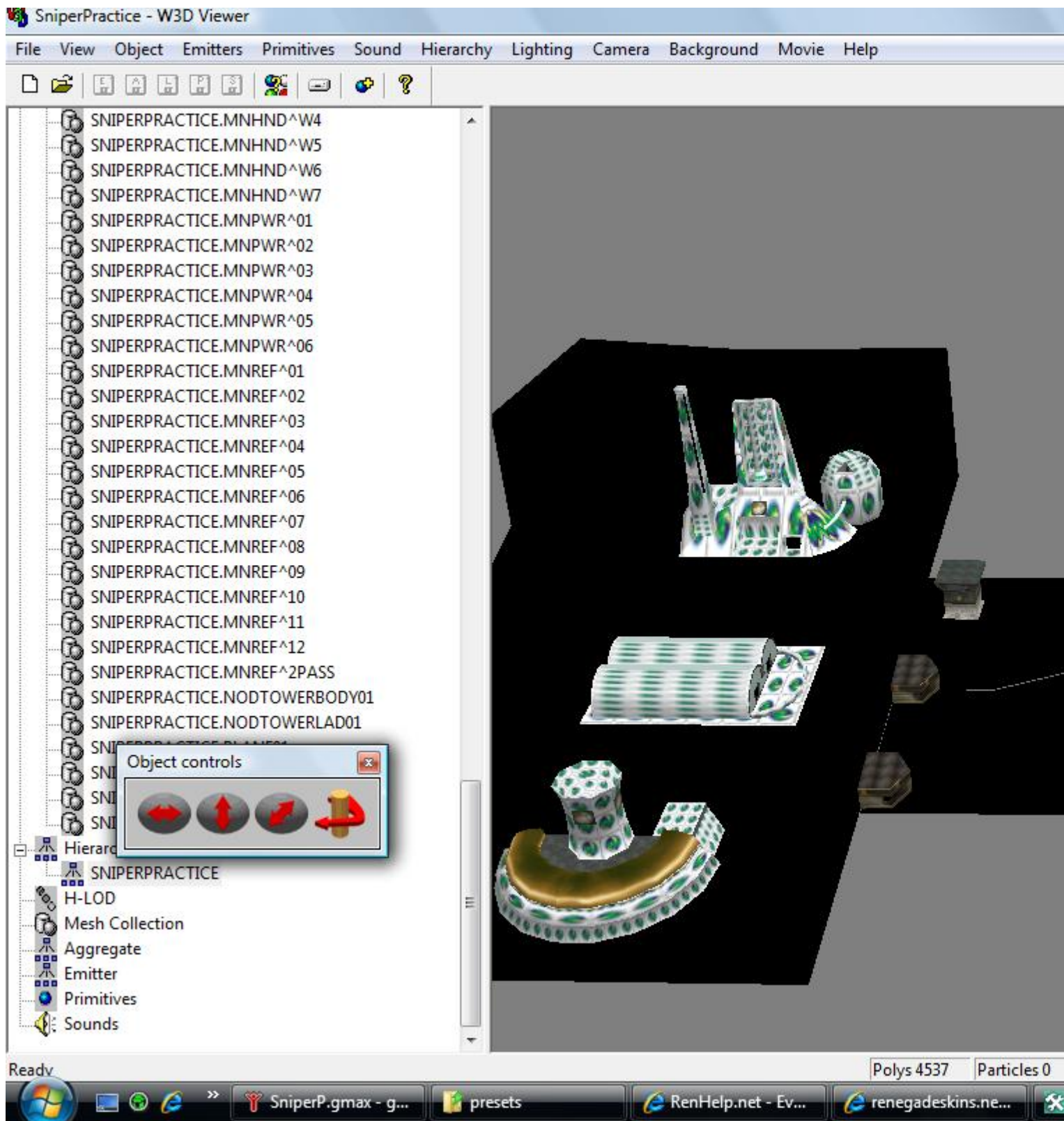
Posted by [Good-One-Driver](#) on Tue, 29 Sep 2009 13:05:59 GMT

[View Forum Message](#) <> [Reply to Message](#)

ok i did that now i get this

File Attachments

1) [ok3.jpg](#), downloaded 622 times



Subject: Re: Uploading Texture To Map
Posted by [ErroR](#) on Tue, 29 Sep 2009 13:07:37 GMT

[View Forum Message](#) <> [Reply to Message](#)

DO MORE. but if you want to change a map, textures perhaps, USE LEVEL EDIT, really, threw renx it's too hard

Subject: Re: Uploading Texture To Map

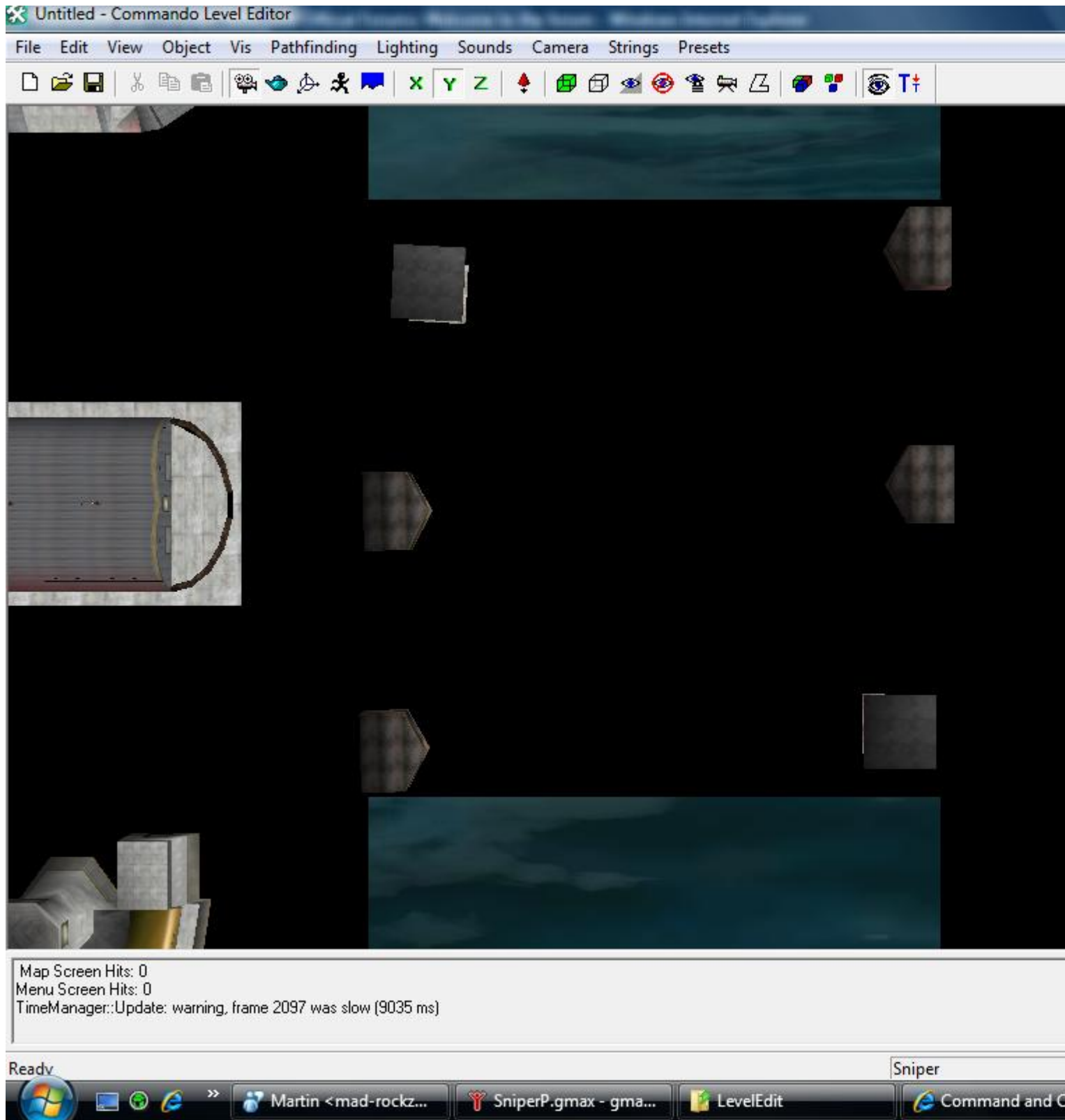
Posted by [Good-One-Driver](#) on Thu, 01 Oct 2009 18:47:36 GMT

[View Forum Message](#) <> [Reply to Message](#)

ok so i uploded all my texture and this is waht i get

File Attachments

1) [HELPOUJK.jpg](#), downloaded 636 times



Subject: Re: Uploading Texture To Map
Posted by [Reaver11](#) on Fri, 02 Oct 2009 09:07:31 GMT

[View Forum Message](#) <> [Reply to Message](#)

Did you uvwmap your terrain?

Subject: Re: Uploading Texture To Map

Posted by [Good-One-Driver](#) on Fri, 02 Oct 2009 14:14:37 GMT

[View Forum Message](#) <> [Reply to Message](#)

Reaver11 wrote on Fri, 02 October 2009 05:07Did you uvwmap your terrain?

No I don't think it was in tut ethier
How I do this?

EDIT: Yes i did do it sorry
