

---

Subject: Help

Posted by [N1warhead](#) on Tue, 15 Sep 2009 05:46:36 GMT

[View Forum Message](#) <> [Reply to Message](#)

---

I just now started to make maps again for Rene, and I can't find a working 3ds max 8 exporter ANYWHERE.

Every time I do one, it always gives me this error.  
(download the JPG)

I've tried like from 4 different websites, it NEVER fixes. It's getting on my last nerve.

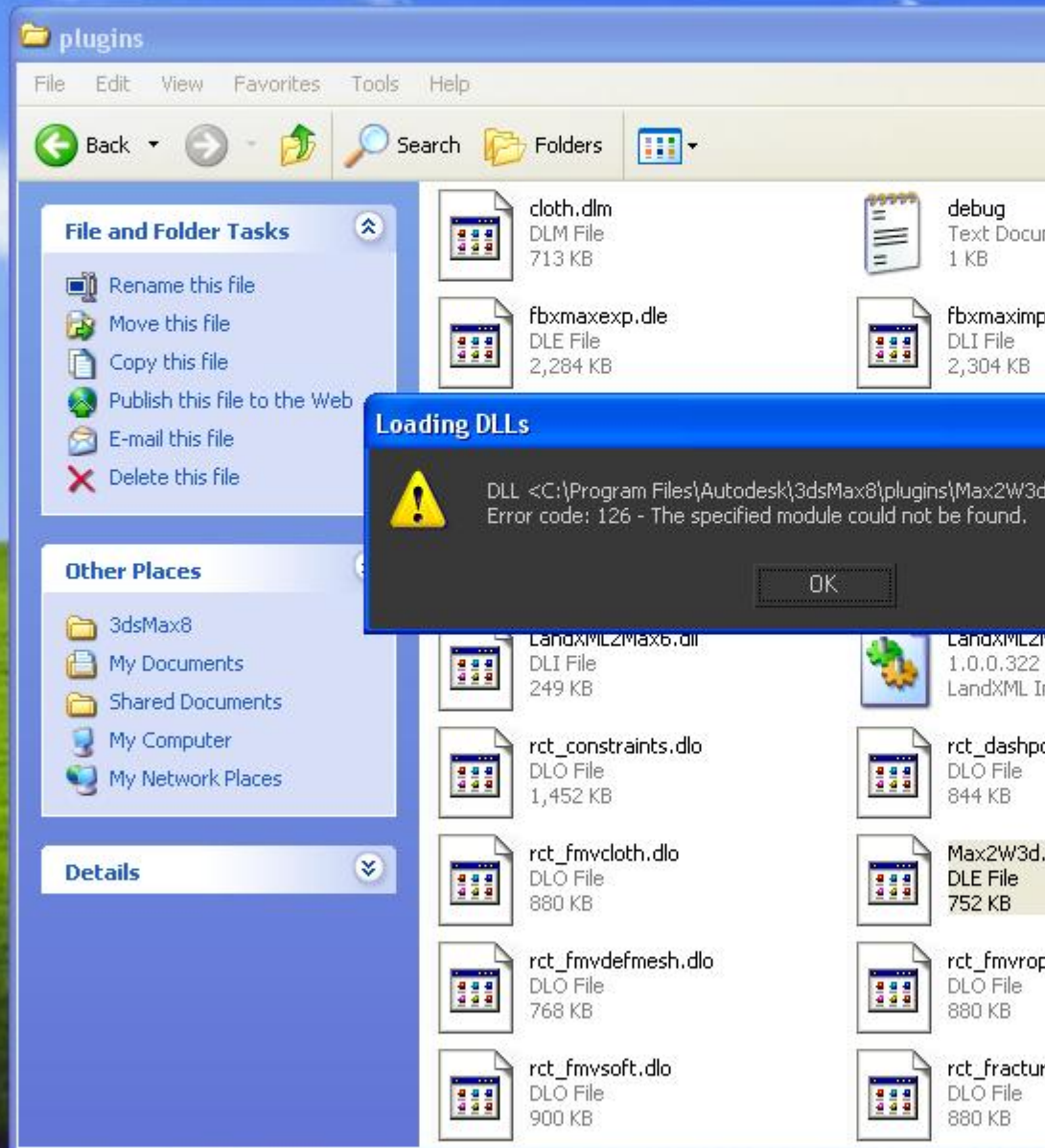
Thanks,  
N1warhead.

---

### File Attachments

1) [Help.JPG](#), downloaded 566 times

---



### Loading DLLs



DLL <C:\Program Files\Autodesk\3dsMax8\plugins\Max2W3d...  
Error code: 126 - The specified module could not be found.

OK

Subject: Re: Help  
Posted by [ErroR](#) on Tue, 15 Sep 2009 12:00:57 GMT  
[View Forum Message](#) <> [Reply to Message](#)

---

the one for RenX works for 3ds max too

---

Subject: Re: Help  
Posted by [N1warhead](#) on Tue, 15 Sep 2009 12:30:17 GMT  
[View Forum Message](#) <> [Reply to Message](#)

---

ErroR wrote on Tue, 15 September 2009 08:00the one for RenX works for 3ds max too

Thanks Error, I'll look into it, thank you.

---

Subject: Re: Help  
Posted by [YazooGang](#) on Tue, 15 Sep 2009 20:05:42 GMT  
[View Forum Message](#) <> [Reply to Message](#)

---

Are you sure your using 3ds max 8?

---

Subject: Re: Help  
Posted by [N1warhead](#) on Wed, 16 Sep 2009 00:09:59 GMT  
[View Forum Message](#) <> [Reply to Message](#)

---

YazooGang wrote on Tue, 15 September 2009 15:05Are you sure your using 3ds max 8?

Oh yes, that's the only version I like, THE ONLY one.  
So I know the differences between the different ones. And not to mention it says "3ds max 8" lol.

---

Subject: Re: Help  
Posted by [N1warhead](#) on Wed, 16 Sep 2009 00:48:00 GMT  
[View Forum Message](#) <> [Reply to Message](#)

---

Okay this is irritating me, I even tried my old 3d's max 7 copy and it still doesn't work. What is going on with this crap.

I've tried the one from [www.game-maps.net](http://www.game-maps.net), I've tried the one from [www.planetcnc.com](http://www.planetcnc.com) and so on. None of these things are working for some reason.

---

---

Subject: Re: Help  
Posted by [E!](#) on Wed, 16 Sep 2009 04:39:21 GMT  
[View Forum Message](#) <> [Reply to Message](#)

---

i guess i had the same problem and had some manual copieing to do if i remember right it's been a while since i had to install it so i'm not sure about but afaik i even copied some renX stuff into my 3dsmax8 folders

---

Subject: Re: Help  
Posted by [Omar007](#) on Wed, 16 Sep 2009 14:53:21 GMT  
[View Forum Message](#) <> [Reply to Message](#)

---

Hmm i don't remember exactly where i got it but somewhere on the APB forums i downloaded a whole Impoter/Exporter pack for 3DSMax 8

---

Subject: Re: Help  
Posted by [wubwub](#) on Sat, 19 Sep 2009 19:20:38 GMT  
[View Forum Message](#) <> [Reply to Message](#)

---

<http://www.apathbeyond.com/forum/index.php?showtopic=16661>

---