
Subject: Level edit

Posted by [farheen](#) on Sun, 26 Jul 2009 16:40:08 GMT

[View Forum Message](#) <> [Reply to Message](#)

im new to this forum, whenever i start Level Edit and try to load terrain and gdi base and all that.
it says this,

Toggle Spoiler,530.78,-11.48)

Unable to split node! objcount = 6. (-190.17,512.11,-1.66)
Unable to split node! objcount = 8. (-198.33,515.71,-1.66)
Unable to split node! objcount = 6. (-201.86,513.64,-11.10)
Unable to split node! objcount = 10. (-189.41,541.53,-27.34)
Unable to split node! objcount = 4. (-190.90,534.79,-27.81)
Unable to split node! objcount = 12. (-190.38,527.06,-27.78)
Unable to split node! objcount = 4. (-206.83,533.39,13.89)
Unable to split node! objcount = 12. (-217.33,533.67,17.47)
Unable to split node! objcount = 4. (-215.51,539.37,6.35)
Unable to split node! objcount = 7. (-215.81,526.72,7.98)
Unable to split node! objcount = 4. (-207.53,549.37,-1.66)
Unable to split node! objcount = 4. (-205.43,537.15,-0.48)
Unable to split node! objcount = 4. (-209.51,535.94,-1.38)
Unable to split node! objcount = 4. (-205.43,528.83,-0.48)
Unable to split node! objcount = 4. (-206.99,515.85,-1.66)
Unable to split node! objcount = 6. (-221.39,569.37,-10.31)
Unable to split node! objcount = 4. (-208.29,529.97,-9.94)
Unable to split node! objcount = 4. (-220.49,542.40,-9.14)
Unable to split node! objcount = 6. (-290.60,535.88,31.75)
Unable to split node! objcount = 4. (-298.98,531.28,35.09)
Unable to split node! objcount = 4. (-282.33,545.44,24.44)
Unable to split node! objcount = 4. (-297.01,531.79,22.76)
Unable to split node! objcount = 3. (-306.50,536.25,22.76)
Unable to split node! objcount = 7. (-290.99,523.24,31.36)
Unable to split node! objcount = 4. (-300.93,523.87,31.56)
Unable to split node! objcount = 3. (-272.94,522.91,21.86)
Unable to split node! objcount = 4. (-290.51,524.50,24.39)
Unable to split node! objcount = 4. (-297.27,524.50,24.39)
Unable to split node! objcount = 5. (-306.31,523.83,22.76)
Unable to split node! objcount = 3. (-276.06,514.24,23.38)
Unable to split node! objcount = 8. (-296.19,515.50,25.86)
Unable to split node! objcount = 4. (-296.19,509.12,23.32)
Unable to split node! objcount = 8. (-293.84,500.31,23.07)
Unable to split node! objcount = 16. (-283.92,552.52,17.78)
Unable to split node! objcount = 10. (-278.23,546.84,18.28)
Unable to split node! objcount = 6. (-292.19,547.02,17.78)
Unable to split node! objcount = 6. (-276.76,536.80,18.28)
Unable to split node! objcount = 4. (-281.40,538.07,17.15)
Unable to split node! objcount = 4. (-276.31,528.73,17.94)
Unable to split node! objcount = 6. (-283.05,528.78,17.91)

Unable to split node! objcount = 5. (-293.60,539.94,19.27)
 Unable to split node! objcount = 4. (-295.00,528.18,17.68)
 Unable to split node! objcount = 5. (-276.64,518.44,19.70)
 Unable to split node! objcount = 4. (-281.22,518.77,19.20)
 Unable to split node! objcount = 4. (-286.40,522.07,17.69)
 Unable to split node! objcount = 6. (-290.44,514.82,17.86)
 Unable to split node! objcount = 8. (-291.18,506.99,19.47)
 Unable to split node! objcount = 4. (-300.90,550.53,20.66)
 Unable to split node! objcount = 7. (-300.06,540.56,19.31)
 Unable to split node! objcount = 13. (-311.33,538.80,18.89)
 Unable to split node! objcount = 6. (-314.42,532.81,17.15)
 Unable to split node! objcount = 8. (-297.88,529.28,17.68)
 Unable to split node! objcount = 4. (-301.82,519.12,16.92)
 Unable to split node! objcount = 4. (-310.12,528.40,17.15)
 Unable to split node! objcount = 8. (-313.80,528.05,17.78)
 Unable to split node! objcount = 4. (-306.78,514.55,17.15)
 Unable to split node! objcount = 4. (-316.81,522.15,17.15)
 Unable to split node! objcount = 8. (-313.84,516.33,17.78)
 Unable to split node! objcount = 3. (7.47,368.78,9.12)
 Unable to split node! objcount = 3. (54.37,330.52,0.92)
 Unable to split node! objcount = 3. (33.46,324.65,3.54)
 Unable to split node! objcount = 3. (25.75,317.30,5.18)
 Unable to split node! objcount = 4. (-128.86,344.16,12.41)
 Unable to split node! objcount = 3. (-138.25,371.41,14.35)
 Unable to split node! objcount = 7. (-143.73,373.09,12.99)
 Unable to split node! objcount = 3. (-140.79,351.55,19.24)
 Unable to split node! objcount = 4. (-142.92,349.56,15.42)
 Attempting to load: C:\Program
 Files\RenegadePublicTools\LevelEdit\new\tiles\dsapo\HND_INT_LM005.W3D
 Attempting to load: C:\Program
 Files\RenegadePublicTools\LevelEdit\new\tiles\HND_INT_LM005.W3D
 Attempting to load: C:\Program Files\RenegadePublicTools\LevelEdit\new\tiles\building
 aggregates\hand of nod\hnd_pct_master.tga
 Attempting to load: C:\Program Files\RenegadePublicTools\LevelEdit\new\tiles\building
 aggregates\hnd_pct_master.tga
 Attempting to load: C:\Program Files\RenegadePublicTools\LevelEdit\new\tiles\building
 aggregates\hand of nod\E_FLAME4.W3D
 Attempting to load: C:\Program Files\RenegadePublicTools\LevelEdit\new\tiles\building
 aggregates\E_FLAME4.W3D
 Attempting to load: C:\Program Files\RenegadePublicTools\LevelEdit\new\tiles\building
 aggregates\hand of nod\E_FLAME4.W3D
 Attempting to load: C:\Program Files\RenegadePublicTools\LevelEdit\new\tiles\building
 aggregates\E_FLAME4.W3D
 Attempting to load: C:\Program Files\RenegadePublicTools\LevelEdit\new\tiles\building
 aggregates\hand of nod\E_FLAME4.W3D
 Attempting to load: C:\Program Files\RenegadePublicTools\LevelEdit\new\tiles\building
 aggregates\E_FLAME4.W3D
 Attempting to load: C:\Program Files\RenegadePublicTools\LevelEdit\new\tiles\building

aggregates\hand of nod\E_FLAME4.W3D
Attempting to load: C:\Program Files\RenegadePublicTools\LevelEdit\new\tiles\building
aggregates\E_FLAME4.W3D
Attempting to load: C:\Program Files\RenegadePublicTools\LevelEdit\new\tiles\building
aggregates\hand of nod\E_19_REDSPRK.W3D
Attempting to load: C:\Program Files\RenegadePublicTools\LevelEdit\new\tiles\building
aggregates\E_19_REDSPRK.W3D
Attempting to load: C:\Program Files\RenegadePublicTools\LevelEdit\new\tiles\building
aggregates\hand of nod\E_19_REDSPRK.W3D
Attempting to load: C:\Program Files\RenegadePublicTools\LevelEdit\new\tiles\building
aggregates\E_19_REDSPRK.W3D
Attempting to load: C:\Program Files\RenegadePublicTools\LevelEdit\new\tiles\building
aggregates\hand of nod\E_FLAME2.W3D
Attempting to load: C:\Program Files\RenegadePublicTools\LevelEdit\new\tiles\building
aggregates\E_FLAME2.W3D
Attempting to load: C:\Program Files\RenegadePublicTools\LevelEdit\new\tiles\building
aggregates\hand of nod\E_19_REDSPRK.W3D
Attempting to load: C:\Program Files\RenegadePublicTools\LevelEdit\new\tiles\building
aggregates\E_19_REDSPRK.W3D
Attempting to load: C:\Program Files\RenegadePublicTools\LevelEdit\new\tiles\building
aggregates\hand of nod\E_19_REDSPRK.W3D
Attempting to load: C:\Program Files\RenegadePublicTools\LevelEdit\new\tiles\building
aggregates\E_19_REDSPRK.W3D
Attempting to load: C:\Program Files\RenegadePublicTools\LevelEdit\new\tiles\building
aggregates\hand of nod\E_FLAME2.W3D
Attempting to load: C:\Program Files\RenegadePublicTools\LevelEdit\new\tiles\building
aggregates\E_FLAME2.W3D
Attempting to load: C:\Program Files\RenegadePublicTools\LevelEdit\new\tiles\building
aggregates\hand of nod\E_19_REDSPRK.W3D
Attempting to load: C:\Program Files\RenegadePublicTools\LevelEdit\new\tiles\building
aggregates\E_19_REDSPRK.W3D
Attempting to load: C:\Program Files\RenegadePublicTools\LevelEdit\new\tiles\building
aggregates\hand of nod\E_19_REDSPRK.W3D
Attempting to load: C:\Program Files\RenegadePublicTools\LevelEdit\new\tiles\building
aggregates\E_19_REDSPRK.W3D
Attempting to load: C:\Program Files\RenegadePublicTools\LevelEdit\new\tiles\building
aggregates\hand of nod\E_19_REDSPRK.W3D
Attempting to load: C:\Program Files\RenegadePublicTools\LevelEdit\new\tiles\building
aggregates\E_19_REDSPRK.W3D
Attempting to load: C:\Program Files\RenegadePublicTools\LevelEdit\new\tiles\building

aggregates\hand of nod\E_FLAME2.W3D

Attempting to load: C:\Program Files\RenegadePublicTools\LevelEdit\new\tiles\building
aggregates\E_FLAME2.W3D

Unable to split node! objcount = 8. (-180.34,538.91,18.88)
Unable to split node! objcount = 10. (-179.97,531.67,21.50)
Unable to split node! objcount = 6. (-180.34,530.05,14.70)
Unable to split node! objcount = 8. (-185.48,536.66,18.17)
Unable to split node! objcount = 4. (-185.48,528.90,17.33)
Unable to split node! objcount = 4. (-177.70,540.63,5.91)
Unable to split node! objcount = 4. (-182.99,539.40,6.43)
Unable to split node! objcount = 3. (-181.01,535.13,5.22)
Unable to split node! objcount = 3. (-176.82,527.22,4.60)
Unable to split node! objcount = 6. (-144.76,549.90,-3.95)
Unable to split node! objcount = 4. (-155.46,549.90,-3.95)
Unable to split node! objcount = 6. (-144.76,524.09,-3.95)
Unable to split node! objcount = 4. (-155.46,524.09,-3.95)
Unable to split node! objcount = 4. (-162.18,524.06,-2.70)
Unable to split node! objcount = 4. (-174.04,540.57,-2.70)
Unable to split node! objcount = 4. (-179.85,544.90,-2.70)
Unable to split node! objcount = 4. (-165.64,548.69,-9.26)
Unable to split node! objcount = 4. (-170.74,545.58,-9.26)
Unable to split node! objcount = 4. (-178.24,554.09,-9.26)
Unable to split node! objcount = 6. (-178.24,545.58,-9.26)
Unable to split node! objcount = 4. (-169.29,531.13,-2.70)
Unable to split node! objcount = 6. (-179.29,529.40,-2.70)
Unable to split node! objcount = 4. (-167.29,522.74,-2.39)
Unable to split node! objcount = 6. (-174.62,522.74,-2.39)
Unable to split node! objcount = 8. (-168.19,530.06,-9.26)
Unable to split node! objcount = 4. (-168.19,520.99,-9.26)
Unable to split node! objcount = 4. (-178.24,533.54,-9.26)
Unable to split node! objcount = 8. (-178.24,523.79,-9.26)
Unable to split node! objcount = 4. (-154.13,544.67,-13.16)
Unable to split node! objcount = 4. (-164.46,539.11,-14.48)
Unable to split node! objcount = 4. (-148.89,525.26,-11.61)
Unable to split node! objcount = 4. (-158.88,526.46,-14.11)
Unable to split node! objcount = 4. (-169.04,539.09,-14.48)
Unable to split node! objcount = 8. (-182.37,539.11,-14.48)
Unable to split node! objcount = 6. (-168.02,538.04,-30.11)
Unable to split node! objcount = 4. (-168.02,531.16,-30.11)
Unable to split node! objcount = 4. (-170.99,524.72,-30.11)
Unable to split node! objcount = 5. (-178.52,541.19,-28.21)
Unable to split node! objcount = 8. (-182.16,530.84,-28.62)
Unable to split node! objcount = 4. (-189.21,535.08,22.05)
Unable to split node! objcount = 13. (-188.55,532.56,10.28)
Unable to split node! objcount = 8. (-196.22,538.37,10.54)
Unable to split node! objcount = 4. (-193.61,526.85,9.69)
Unable to split node! objcount = 5. (-199.14,524.95,9.69)
Unable to split node! objcount = 4. (-189.03,552.69,-1.66)

Unable to split node! objcount = 6. (-198.61,551.63,-1.66)
Unable to split node! objcount = 4. (-191.51,550.82,-13.64)
Unable to split node! objcount = 6. (-191.61,531.34,-2.45)
Unable to split node! objcount = 8. (-195.26,530.78,-11.48)
Unable to split node! objcount = 6. (-190.17,512.11,-1.66)
Unable to split node! objcount = 8. (-198.33,515.71,-1.66)
Unable to split node! objcount = 6. (-201.86,518.70,-10.19)
Unable to split node! objcount = 12. (-189.41,540.07,-27.34)
Unable to split node! objcount = 12. (-190.38,527.06,-27.78)
Unable to split node! objcount = 4. (-206.83,533.39,13.89)
Unable to split node! objcount = 6. (-217.33,537.69,17.47)
Unable to split node! objcount = 6. (-217.33,529.59,17.47)
Unable to split node! objcount = 3. (-220.37,542.04,6.86)
Unable to split node! objcount = 7. (-215.81,526.72,7.98)
Unable to split node! objcount = 4. (-207.53,549.37,-1.66)
Unable to split node! objcount = 4. (-205.43,537.15,-0.48)
Unable to split node! objcount = 6. (-209.51,535.94,-1.38)
Unable to split node! objcount = 4. (-205.43,528.83,-0.48)
Unable to split node! objcount = 4. (-206.99,515.85,-1.66)
Unable to split node! objcount = 8. (-223.61,566.03,-10.31)
Unable to split node! objcount = 6. (-208.15,537.39,-9.94)
Unable to split node! objcount = 6. (-222.00,529.20,-9.14)
Unable to split node! objcount = 6. (-290.51,539.13,31.52)
Unable to split node! objcount = 4. (-298.98,531.28,35.09)
Unable to split node! objcount = 3. (-291.65,524.94,30.04)
Unable to split node! objcount = 6. (-294.24,521.68,29.95)
Unable to split node! objcount = 4. (-300.93,523.87,31.56)
Unable to split node! objcount = 10. (-280.07,551.87,17.78)
Unable to split node! objcount = 10. (-287.07,552.46,17.78)
Unable to split node! objcount = 6. (-277.52,542.92,18.28)
Unable to split node! objcount = 6. (-292.19,545.38,17.78)
Unable to split node! objcount = 6. (-280.96,536.78,18.28)
Unable to split node! objcount = 6. (-280.09,528.77,17.92)
Unable to split node! objcount = 3. (-288.33,536.43,22.76)
Unable to split node! objcount = 4. (-286.30,537.80,16.37)
Unable to split node! objcount = 3. (-293.65,539.94,19.32)
Unable to split node! objcount = 5. (-294.45,530.19,20.64)
Unable to split node! objcount = 4. (-300.90,550.53,20.66)
Unable to split node! objcount = 9. (-300.06,540.43,19.31)
Unable to split node! objcount = 3. (-301.54,531.79,22.76)
Unable to split node! objcount = 8. (-297.88,529.28,17.68)
Unable to split node! objcount = 6. (-309.92,543.32,17.15)
Unable to split node! objcount = 9. (-308.69,538.35,19.85)
Unable to split node! objcount = 3. (-315.89,536.70,18.89)
Unable to split node! objcount = 4. (-310.12,528.40,17.15)
Unable to split node! objcount = 10. (-313.80,530.56,17.78)
Unable to split node! objcount = 8. (-276.64,520.48,20.00)
Unable to split node! objcount = 4. (-279.93,519.91,20.22)

Unable to split node! objcount = 7. (-285.24,520.53,20.37)
Unable to split node! objcount = 5. (-276.06,514.24,22.68)
Unable to split node! objcount = 3. (-285.62,513.84,22.68)
Unable to split node! objcount = 4. (-296.19,513.36,25.00)
Unable to split node! objcount = 4. (-294.56,515.66,17.49)
Unable to split node! objcount = 4. (-289.25,506.99,19.47)
Unable to split node! objcount = 12. (-295.62,506.99,21.10)
Unable to split node! objcount = 6. (-293.52,498.37,23.07)
Unable to split node! objcount = 4. (-301.82,519.12,16.92)
Unable to split node! objcount = 6. (-307.79,517.59,17.15)
Unable to split node! objcount = 8. (-313.09,523.79,18.53)
Unable to split node! objcount = 4. (-312.22,512.73,20.48)
Unable to split node! objcount = 4. (-317.20,517.91,17.15)
Unable to split node! objcount = 3. (7.47,368.78,9.12)
Unable to split node! objcount = 3. (-10.60,367.36,15.13)
Unable to split node! objcount = 3. (31.28,325.39,3.33)
Unable to split node! objcount = 3. (27.69,316.49,4.96)
Unable to split node! objcount = 4. (-126.33,342.75,12.98)
Unable to split node! objcount = 3. (-131.57,345.04,10.11)
Unable to split node! objcount = 8. (-140.89,373.09,13.05)
Unable to split node! objcount = 6. (-140.79,358.85,16.96)
Unable to split node! objcount = 3. (-138.70,348.61,17.14)
Unable to split node! objcount = 4. (0.00,-0.00,-4.88)
Unable to split node! objcount = 4. (-177.07,536.83,14.70)
Unable to split node! objcount = 8. (-185.48,537.69,17.33)
Unable to split node! objcount = 12. (-183.66,530.97,18.48)
Unable to split node! objcount = 6. (-183.18,536.83,14.70)
Unable to split node! objcount = 4. (-181.82,526.50,16.78)
Unable to split node! objcount = 4. (-174.54,530.56,6.97)
Unable to split node! objcount = 6. (-181.51,540.63,5.91)
Unable to split node! objcount = 4. (-184.58,530.03,5.22)
Unable to split node! objcount = 6. (-144.76,549.90,-3.95)
Unable to split node! objcount = 4. (-155.46,549.90,-3.95)
Unable to split node! objcount = 6. (-144.76,524.09,-3.95)
Unable to split node! objcount = 4. (-155.46,524.09,-3.95)
Unable to split node! objcount = 4. (-162.18,524.06,-2.70)
Unable to split node! objcount = 4. (-169.26,541.24,-2.70)
Unable to split node! objcount = 4. (-179.85,544.90,-2.70)
Unable to split node! objcount = 10. (-168.19,548.69,-9.26)
Unable to split node! objcount = 6. (-178.24,550.98,-9.26)
Unable to split node! objcount = 4. (-178.24,543.29,-9.26)
Unable to split node! objcount = 4. (-179.29,530.95,-2.70)
Unable to split node! objcount = 6. (-167.61,522.74,-2.39)
Unable to split node! objcount = 4. (-174.62,522.74,-2.39)
Unable to split node! objcount = 8. (-168.19,530.06,-9.26)
Unable to split node! objcount = 4. (-168.19,520.99,-9.26)
Unable to split node! objcount = 4. (-178.24,533.54,-9.26)
Unable to split node! objcount = 8. (-178.24,523.79,-9.26)

Unable to split node! objcount = 4. (-148.98,544.67,-11.70)
Unable to split node! objcount = 6. (-161.08,541.52,-14.48)
Unable to split node! objcount = 4. (-148.89,525.26,-11.61)
Unable to split node! objcount = 4. (-158.88,526.46,-14.11)
Unable to split node! objcount = 4. (-169.04,539.09,-14.48)
Unable to split node! objcount = 8. (-182.37,539.11,-14.48)
Unable to split node! objcount = 6. (-172.31,537.64,-30.11)
Unable to split node! objcount = 4. (-168.02,531.16,-30.11)
Unable to split node! objcount = 4. (-170.99,524.72,-30.11)
Unable to split node! objcount = 5. (-178.52,541.19,-28.21)
Unable to split node! objcount = 7. (-177.76,527.38,-28.47)
Unable to split node! objcount = 4. (-184.04,531.37,-28.62)
Unable to split node! objcount = 4. (-188.42,530.27,19.27)
Unable to split node! objcount = 6. (-188.59,536.37,10.78)
Unable to split node! objcount = 8. (-188.48,530.54,10.78)
Unable to split node! objcount = 4. (-196.54,540.60,13.46)
Unable to split node! objcount = 6. (-194.20,535.59,8.86)
Unable to split node! objcount = 4. (-193.61,526.85,9.69)
Unable to split node! objcount = 5. (-199.14,524.95,9.69)
Unable to split node! objcount = 4. (-194.22,556.43,-1.66)
Unable to split node! objcount = 6. (-193.62,549.54,-1.66)
Unable to split node! objcount = 4. (-188.78,536.59,-3.34)
Unable to split node! objcount = 4. (-191.61,528.83,-2.45)
Unable to split node! objcount = 8. (-195.26,530.78,-11.48)
Unable to split node! objcount = 4. (-190.17,514.69,-1.66)
Unable to split node! objcount = 6. (-201.86,518.70,-10.19)
Unable to split node! objcount = 6. (-198.33,514.17,-1.66)
Unable to split node! objcount = 10. (-189.41,541.53,-27.34)
Unable to split node! objcount = 10. (-192.49,532.34,-30.37)
Unable to split node! objcount = 6. (-188.19,526.85,-27.34)
Unable to split node! objcount = 4. (-206.71,536.99,11.77)
Unable to split node! objcount = 4. (-211.08,525.85,8.90)
Unable to split node! objcount = 4. (-217.33,537.69,17.47)
Unable to split node! objcount = 3. (-219.89,543.46,10.44)
Unable to split node! objcount = 4. (-217.33,529.59,17.47)
Unable to split node! objcount = 4. (-216.88,529.59,13.89)
Unable to split node! objcount = 4. (-209.51,535.94,-1.38)
Unable to split node! objcount = 8. (-215.49,535.72,4.88)
Unable to split node! objcount = 4. (-205.43,528.83,-0.48)
Unable to split node! objcount = 4. (-207.53,549.37,-1.66)
Unable to split node! objcount = 4. (-206.99,515.85,-1.66)
Unable to split node! objcount = 4. (-208.29,529.97,-9.94)
Unable to split node! objcount = 8. (-223.61,566.03,-10.31)
Unable to split node! objcount = 4. (-226.04,518.01,-9.14)
Unable to split node! objcount = 3. (-286.96,539.13,31.52)
Unable to split node! objcount = 5. (-292.80,535.43,31.75)
Unable to split node! objcount = 4. (-298.98,531.28,35.09)
Unable to split node! objcount = 9. (-291.17,522.65,31.05)

Unable to split node! objcount = 5. (-300.93,521.68,31.06)
Unable to split node! objcount = 6. (-280.46,553.09,17.78)
Unable to split node! objcount = 10. (-278.23,546.84,18.28)
Unable to split node! objcount = 10. (-287.07,552.46,17.78)
Unable to split node! objcount = 7. (-292.19,545.19,18.08)
Unable to split node! objcount = 4. (-281.40,538.07,17.15)
Unable to split node! objcount = 4. (-279.22,533.36,18.28)
Unable to split node! objcount = 6. (-278.75,528.77,17.92)
Unable to split node! objcount = 4. (-283.74,527.13,17.54)
Unable to split node! objcount = 6. (-291.51,533.15,22.76)
Unable to split node! objcount = 4. (-295.00,528.18,17.68)
Unable to split node! objcount = 4. (-300.90,550.53,20.66)
Unable to split node! objcount = 6. (-303.37,533.47,22.76)
Unable to split node! objcount = 5. (-300.06,540.02,19.31)
Unable to split node! objcount = 8. (-297.88,529.28,17.68)
Unable to split node! objcount = 15. (-311.33,540.57,18.89)
Unable to split node! objcount = 8. (-310.12,529.55,17.15)
Unable to split node! objcount = 4. (-317.13,530.59,17.15)
Unable to split node! objcount = 10. (-276.64,520.48,20.00)
Unable to split node! objcount = 8. (-280.89,518.82,20.22)
Unable to split node! objcount = 4. (-286.40,522.07,17.69)
Unable to split node! objcount = 4. (-288.51,514.82,17.86)
Unable to split node! objcount = 4. (-289.25,506.99,19.47)
Unable to split node! objcount = 12. (-295.62,511.58,21.33)
Unable to split node! objcount = 8. (-295.62,501.18,22.38)
Unable to split node! objcount = 3. (-306.31,521.89,22.76)
Unable to split node! objcount = 6. (-304.48,514.55,17.15)
Unable to split node! objcount = 8. (-313.09,523.79,18.53)
Unable to split node! objcount = 4. (-312.22,520.02,20.48)
Unable to split node! objcount = 4. (-312.22,512.73,20.48)
Unable to split node! objcount = 4. (-317.20,517.91,17.15)
Unable to split node! objcount = 3. (7.47,368.78,9.12)
Unable to split node! objcount = 4. (31.28,324.65,3.54)
Unable to split node! objcount = 3. (-128.27,343.58,12.98)
Unable to split node! objcount = 8. (-140.89,373.09,13.05)
Unable to split node! objcount = 4. (-140.79,358.85,19.17)
Unable to split node! objcount = 4. (-142.92,349.56,15.42)
Unable to split node! objcount = 3. (45.08,152.83,4.39)
Unable to split node! objcount = 5. (-52.25,-65.29,1.00)
Unable to split node! objcount = 3. (-183.21,533.10,33.94)
Unable to split node! objcount = 4. (-183.56,537.30,20.64)
Unable to split node! objcount = 3. (-183.71,535.02,21.34)
Unable to split node! objcount = 3. (-188.27,528.70,16.59)
Unable to split node! objcount = 3. (-206.23,543.07,13.17)
Unable to split node! objcount = 3. (-204.20,533.10,21.51)
Unable to split node! objcount = 4. (-207.86,533.24,13.85)
Unable to split node! objcount = 3. (-205.98,533.15,10.55)
Unable to split node! objcount = 4. (-217.33,533.48,17.48)

Unable to split node! objcount = 4. (-219.36,533.10,11.67)
Unable to split node! objcount = 3. (-172.63,493.73,38.25)
Unable to split node! objcount = 3. (-206.23,522.37,13.17)
Unable to split node! objcount = 4. (-166.08,504.62,19.12)
Unable to split node! objcount = 3. (-179.11,539.49,6.14)
Unable to split node! objcount = 3. (-181.99,529.84,6.26)
Unable to split node! objcount = 3. (-171.51,537.55,-1.11)
Unable to split node! objcount = 5. (-208.03,533.11,7.63)
Unable to split node! objcount = 5. (-172.87,536.29,-4.57)
Unable to split node! objcount = 4. (-174.09,536.32,-9.41)
Unable to split node! objcount = 4. (-174.09,548.04,-12.77)
Unable to split node! objcount = 3. (-191.82,512.39,-4.37)
Unable to split node! objcount = 3. (-204.63,530.26,-5.05)
Unable to split node! objcount = 4. (-208.75,514.59,-14.03)
Unable to split node! objcount = 3. (-169.57,535.34,-30.60)
Unable to split node! objcount = 3. (-169.57,531.68,-30.60)
Unable to split node! objcount = 3. (-188.50,534.39,-29.13)
Unable to split node! objcount = 4. (-194.09,539.83,-21.14)
Unable to split node! objcount = 3. (-264.77,563.03,28.84)
Unable to split node! objcount = 3. (-249.63,525.57,30.82)
Unable to split node! objcount = 3. (-304.59,552.04,31.24)
Unable to split node! objcount = 4. (-297.86,586.85,27.68)
Unable to split node! objcount = 3. (-286.60,548.09,30.64)
Unable to split node! objcount = 3. (-305.38,542.57,33.46)
Unable to split node! objcount = 4. (-297.21,543.18,30.64)
Unable to split node! objcount = 3. (-297.19,536.95,27.94)
Unable to split node! objcount = 3. (-286.24,523.89,30.64)
Unable to split node! objcount = 3. (-293.62,526.17,29.69)
Unable to split node! objcount = 4. (-290.27,537.31,27.53)
Unable to split node! objcount = 3. (-292.86,537.72,27.22)
Unable to split node! objcount = 4. (-295.09,525.74,24.66)
Unable to split node! objcount = 4. (-296.19,511.27,25.59)
Unable to split node! objcount = 3. (-277.53,547.84,18.59)
Unable to split node! objcount = 3. (-297.42,543.05,18.32)
Unable to split node! objcount = 5. (-301.42,546.17,18.64)
Unable to split node! objcount = 3. (-305.42,543.05,18.32)
Unable to split node! objcount = 4. (-278.47,536.74,19.10)
Unable to split node! objcount = 3. (-307.40,533.59,16.21)
Unable to split node! objcount = 3. (-278.89,526.85,21.13)
Unable to split node! objcount = 3. (-286.75,522.35,20.50)
Unable to split node! objcount = 5. (-297.76,528.84,17.00)
Unable to split node! objcount = 4. (-291.18,509.97,20.30)
Unable to split node! objcount = 3. (-308.25,524.09,18.59)
Unable to split node! objcount = 5. (-311.48,527.64,18.45)
Unable to split node! objcount = 3. (-314.09,515.58,18.93)
Unable to split node! objcount = 3. (-97.71,445.35,34.32)
Unable to split node! objcount = 3. (-183.81,477.42,34.60)
Unable to split node! objcount = 3. (-161.81,446.49,34.13)

Unable to split node! objcount = 3. (1.78,370.19,10.48)
Unable to split node! objcount = 3. (20.42,359.88,9.89)
Unable to split node! objcount = 4. (6.76,357.41,10.64)
Unable to split node! objcount = 3. (69.96,328.85,3.53)
Unable to split node! objcount = 3. (59.65,330.52,-1.11)
Unable to split node! objcount = 3. (55.38,307.52,3.96)
Unable to split node! objcount = 3. (34.31,327.75,4.66)
Unable to split node! objcount = 3. (40.87,315.69,3.99)
Unable to split node! objcount = 3. (-10.02,365.67,15.34)
Unable to split node! objcount = 3. (-140.74,350.94,31.01)
Unable to split node! objcount = 3. (-173.11,360.83,21.39)
Unable to split node! objcount = 3. (-119.67,337.66,12.94)
Unable to split node! objcount = 3. (-126.16,345.99,13.48)
Unable to split node! objcount = 3. (-125.38,346.66,11.08)
Unable to split node! objcount = 3. (-122.98,357.16,9.38)
Unable to split node! objcount = 4. (-135.01,360.31,14.49)
Unable to split node! objcount = 3. (-132.89,340.55,9.82)
Unable to split node! objcount = 3. (-129.85,342.60,9.12)
Unable to split node! objcount = 4. (-140.74,372.38,15.95)
Unable to split node! objcount = 5. (-140.74,358.22,18.96)
Unable to split node! objcount = 3. (-142.17,352.89,18.65)
Unable to split node! objcount = 6. (-140.74,351.48,16.43)
Unable to split node! objcount = 3. (-141.57,349.79,13.26)
Unable to split node! objcount = 4. (-136.56,348.54,17.34)
Unable to split node! objcount = 7. (-140.74,348.61,17.42)
Unable to split node! objcount = 3. (-139.97,346.46,14.26)
Unable to split node! objcount = 3. (-140.75,369.12,12.36)
Unable to split node! objcount = 3. (-140.73,367.07,12.36)
Unable to split node! objcount = 3. (-136.95,359.23,11.41)
Unable to split node! objcount = 3. (-140.73,357.83,11.03)
Unable to split node! objcount = 3. (-136.53,357.29,9.38)
Unable to split node! objcount = 3. (-140.66,369.08,9.38)
Unable to split node! objcount = 3. (-140.66,352.91,9.38)
Unable to split node! objcount = 3. (-144.89,350.19,13.16)
Unable to split node! objcount = 3. (117.76,221.91,7.78)
Unable to split node! objcount = 3. (-57.76,241.20,6.18)
Unable to split node! objcount = 3. (-51.02,216.94,7.48)
Unable to split node! objcount = 3. (-53.80,213.09,8.38)
Unable to split node! objcount = 3. (-54.95,219.51,8.38)
Unable to split node! objcount = 3. (56.04,198.99,-1.07)
Unable to split node! objcount = 3. (16.51,289.04,1.41)
Unable to split node! objcount = 3. (-54.52,182.34,8.00)
Unable to split node! objcount = 3. (-48.70,184.04,5.24)
Unable to split node! objcount = 4. (-55.25,182.93,5.04)
Unable to split node! objcount = 4. (-59.41,180.71,5.24)
Unable to split node! objcount = 3. (-71.51,139.07,3.00)
Unable to split node! objcount = 4. (-59.50,157.06,1.34)
Unable to split node! objcount = 3. (-54.34,180.81,0.77)

Unable to split node! objcount = 3. (-64.28,171.18,-0.65)
Unable to split node! objcount = 3. (112.61,96.33,11.70)
Unable to split node! objcount = 4. (114.58,93.56,10.95)
Unable to split node! objcount = 5. (109.86,94.52,11.85)
Unable to split node! objcount = 5. (104.57,118.37,12.17)
Unable to split node! objcount = 4. (28.25,97.59,5.46)
Unable to split node! objcount = 3. (-7.23,102.08,1.37)
Unable to split node! objcount = 3. (-4.02,79.71,3.14)
Unable to split node! objcount = 6. (67.17,13.41,6.39)
Unable to split node! objcount = 4. (90.54,-42.03,5.20)
Unable to split node! objcount = 3. (50.08,-22.41,10.13)
Unable to split node! objcount = 3. (1.54,-36.21,-0.60)
Unable to split node! objcount = 3. (-30.54,55.63,2.23)
Unable to split node! objcount = 3. (-81.45,65.82,11.28)
Unable to split node! objcount = 3. (-35.92,36.94,1.18)
Unable to split node! objcount = 3. (-51.44,-65.69,17.93)
Unable to split node! objcount = 3. (-107.51,289.62,-8.58)
TimeManager::Update: warning, frame 133 was slow (18403 ms)
TimeManager::Update: warning, frame 298 was slow (8070 ms)
TimeManager::Update: warning, frame 301 was slow (3144 ms)
TimeManager::Update: warning, frame 305 was slow (8579 ms)
TimeManager::Update: warning, frame 317 was slow (12543 ms)

can u help me?

Subject: Re: Level edit
Posted by [cnc95fan](#) on Sun, 26 Jul 2009 16:45:51 GMT
[View Forum Message](#) <> [Reply to Message](#)

Erm, did it actually fail to load? That's quite normal

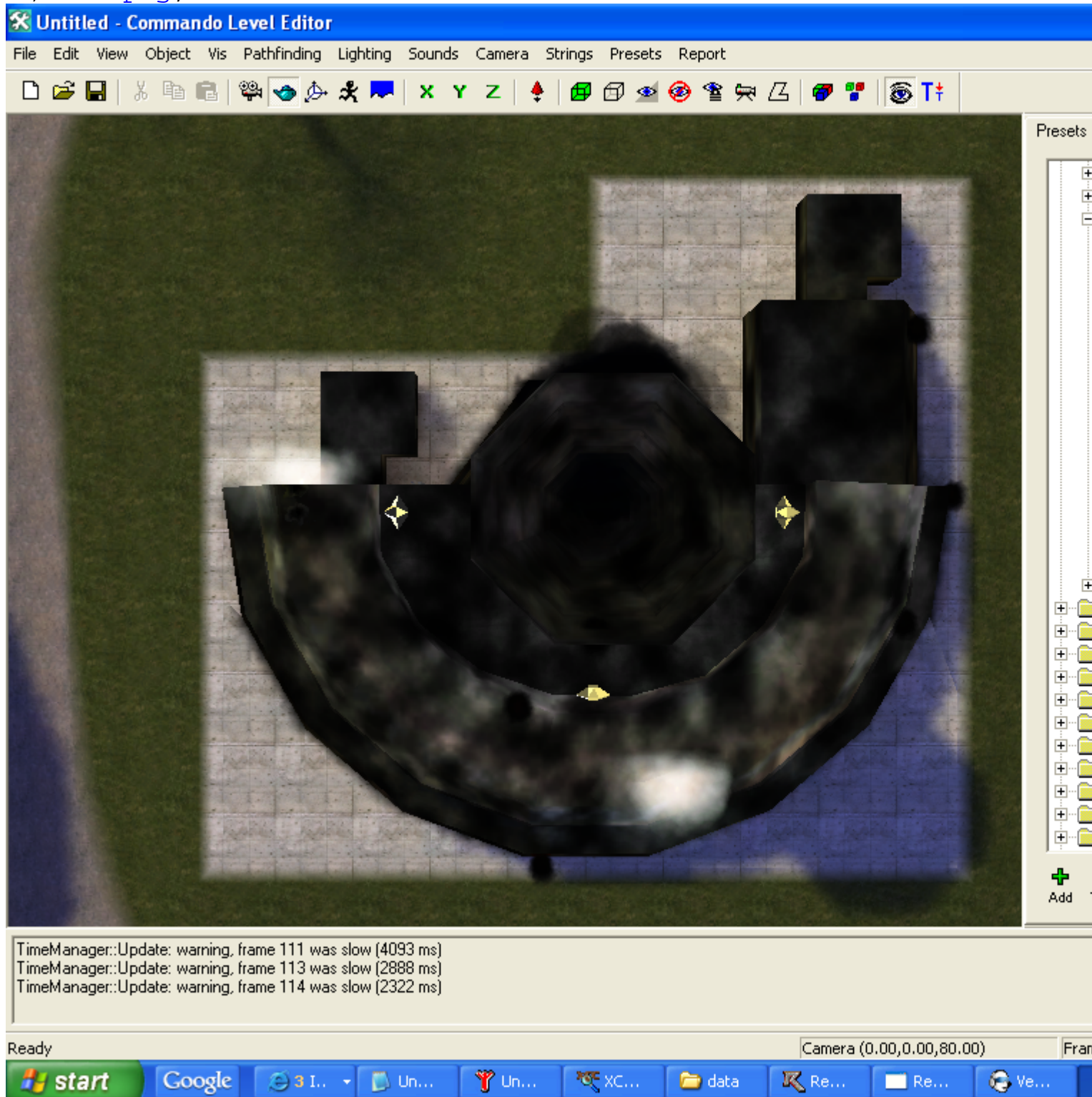
Subject: Re: Level edit
Posted by [farheen](#) on Sun, 26 Jul 2009 16:58:54 GMT
[View Forum Message](#) <> [Reply to Message](#)

cnc95fan wrote on Sun, 26 July 2009 12:45Erm, did it actually fail to load? That's quite normal

yea, and it just loads pp and the ground just that,
when i try to load level - single player. Level_01 0108
01 0108 - GDI base
01 0108 - terrain and all that things..
like this

File Attachments

1) [lol.png](#), downloaded 246 times



Subject: Re: Level edit

Posted by [LR01](#) on Mon, 27 Jul 2009 09:24:24 GMT

[View Forum Message](#) <> [Reply to Message](#)

Well, there is nothing wrong whit the giant text log LE give you.

Subject: Re: Level edit

Posted by [farheen](#) on Mon, 27 Jul 2009 14:42:52 GMT

[View Forum Message](#) <> [Reply to Message](#)

LR01 wrote on Mon, 27 July 2009 04:24Well, there is nothing wrong whit the giant text log LE give you.

then why it only shows a gdi powerplant, wheres the half map?

Subject: Re: Level edit

Posted by [ErroR](#) on Mon, 27 Jul 2009 14:54:40 GMT

[View Forum Message](#) <> [Reply to Message](#)

Move using your numpad. 8 is up, 2 is down, 4 is left, 6 is right. 7,1,9,3 are respectively look up look down, move up, move down.

Also press F8 then esc (only first time or it does nothign) then f8 again

Subject: Re: Level edit

Posted by [farheen](#) on Mon, 27 Jul 2009 18:00:19 GMT

[View Forum Message](#) <> [Reply to Message](#)

ErroR wrote on Mon, 27 July 2009 09:54Move using your numpad. 8 is up, 2 is down, 4 is left, 6 is right. 7,1,9,3 are respectively look up look down, move up, move down.

Also press F8 then esc (only first time or it does nothign) then f8 again

thanks i didnt know that, thanks alot, im new to it.

Subject: Re: Level edit

Posted by [Shinja](#) on Mon, 27 Jul 2009 20:05:38 GMT

[View Forum Message](#) <> [Reply to Message](#)

someimes the solution is sooo simple...

Subject: Re: Level edit

Posted by [ErroR](#) on Mon, 27 Jul 2009 22:40:01 GMT

[View Forum Message](#) <> [Reply to Message](#)

also hold CTRL to fly faster
