

---

Subject: Renx import problems

Posted by [nope.avi](#) on Fri, 03 Jul 2009 02:42:17 GMT

[View Forum Message](#) <> [Reply to Message](#)

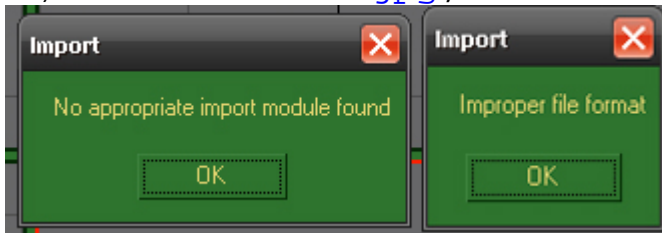
---

Everytime I try to import a w3d file I get these errors

Help.

### File Attachments

1) [thisthenthis.jpg](#), downloaded 817 times



---

Subject: Re: Renx import problems

Posted by [JsxKeule](#) on Fri, 03 Jul 2009 09:29:08 GMT

[View Forum Message](#) <> [Reply to Message](#)

---

you have a w3d importer?

---

Subject: Re: Renx import problems

Posted by [crazfulla](#) on Fri, 03 Jul 2009 11:07:13 GMT

[View Forum Message](#) <> [Reply to Message](#)

---

You fail because you are trying to use the 3DS importer.

Download the W3D importer (here).

Install the files in your RenX directory.

Start RenX

Click the "Utilities" tab.

Click the "MaxScript" button.

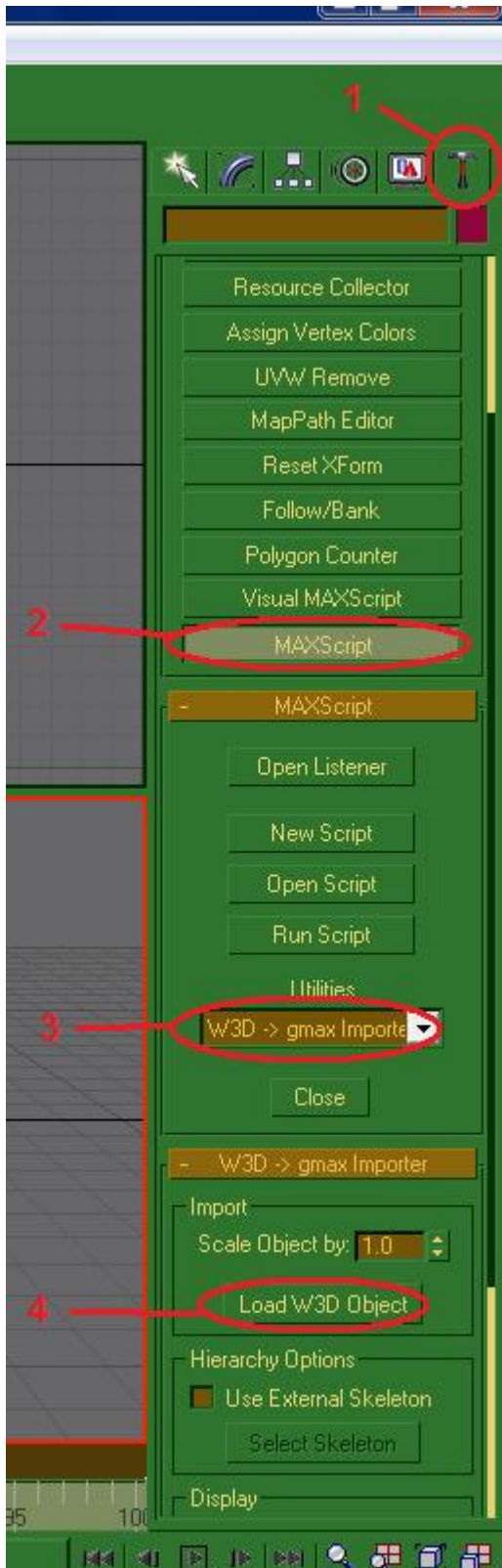
Select W3D - Gmax import.

Click the "Load W3D Object" button.

---

### File Attachments

1) [w3dimport.jpg](#), downloaded 633 times



---

Subject: Re: Renx import problems  
Posted by [ErroR](#) on Fri, 03 Jul 2009 11:53:53 GMT

[View Forum Message](#) <> [Reply to Message](#)

---

if you want to import a character. Then you should tick "Use external skeleton" and go to RenegadePublicTools> How to> Characters> Male/female and chose a skeleton S\_A\_human (male), S\_B\_Human (female)

---

---

Subject: Re: Renx import problems  
Posted by [nope.avi](#) on Fri, 03 Jul 2009 11:56:15 GMT  
[View Forum Message](#) <> [Reply to Message](#)

---

Works perfectly, thanks.

---

---

Subject: Re: Renx import problems  
Posted by [Gen\\_Blacky](#) on Fri, 03 Jul 2009 13:30:20 GMT  
[View Forum Message](#) <> [Reply to Message](#)

---

this importer is better <http://www.renevo.com/files/folders/w3d/entry153.aspx>

---