

---

Subject: Max 2008 Error Help

Posted by [Jerad2142](#) on Tue, 31 Mar 2009 15:28:40 GMT

[View Forum Message](#) <> [Reply to Message](#)

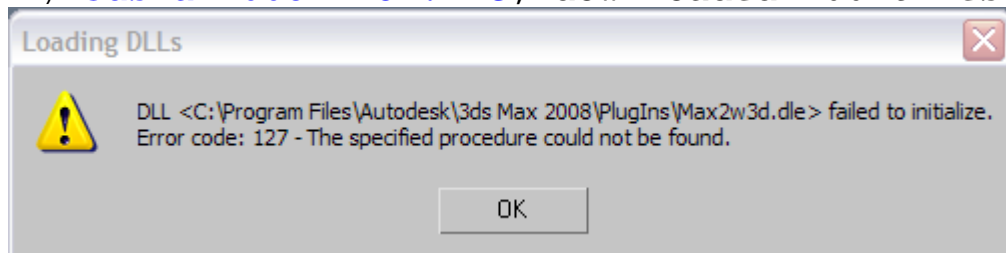
---

I got this error in 3ds max 2008 (This is the first time I've ever tried installing the Renegade importer and exporter into max, need to do it to make some light maps though). And yes, I did search for this, but the closest thing I could find was error code 126 and that wasn't even answered.

If you have any idea of what I did wrong while installing, or just want to provide me with how you installed your importer/exporter please do, just in case I overlooked something.

### File Attachments

1) [3dsMax2008Error.PNG](#), downloaded 266 times



---

Subject: Re: Max 2008 Error Help

Posted by [mr£Ä\\$Ä-z](#) on Tue, 31 Mar 2009 17:07:41 GMT

[View Forum Message](#) <> [Reply to Message](#)

---

Restart Computer and try again thats how it worked for me lol

---

---

Subject: Re: Max 2008 Error Help

Posted by [Di3HardNL](#) on Tue, 31 Mar 2009 17:08:51 GMT

[View Forum Message](#) <> [Reply to Message](#)

---

I believe the importer doesn't work for any 3DS Max versions higher then 8.  
I remember installing 3DS Max 2009 and I got the same error after putting the plugins in the directory.  
But when I got myself 3DS Max 8 it all works fine.

---

---

Subject: Re: Max 2008 Error Help

Posted by [nopol10](#) on Wed, 01 Apr 2009 03:48:00 GMT

[View Forum Message](#) <> [Reply to Message](#)

---

The plugin language was changed from 3dsmax 9 onwards I believe, which makes the exporter not work since it was written pre-version 9.

---

---

Subject: Re: Max 2008 Error Help  
Posted by [Dreganius](#) on Wed, 01 Apr 2009 04:57:29 GMT  
[View Forum Message](#) <> [Reply to Message](#)

---

Problem is, guys, Jerad Gray wrote on Wed, 01 April 2009 01:28l got this error in 3ds max 2008

---

---

Subject: Re: Max 2008 Error Help  
Posted by [nopol10](#) on Wed, 01 Apr 2009 06:04:46 GMT  
[View Forum Message](#) <> [Reply to Message](#)

---

3dsmax 2008 comes before 3dsmax 2009 and after 3dsmax 9 and the change was in 9 and any version above it. The highest version that the plugin works for is 8.

---

---

Subject: Re: Max 2008 Error Help  
Posted by [Jerad2142](#) on Wed, 01 Apr 2009 14:52:31 GMT  
[View Forum Message](#) <> [Reply to Message](#)

---

nopol10 wrote on Wed, 01 April 2009 00:043dsmax 2008 comes before 3dsmax 2009 and after 3dsmax 9 and the change was in 9 and any version above it. The highest version that the plugin works for is 8.

That is possibly the stupidest thing I've ever heard, and no I don't mean what you said, I mean that fact they would do that.

---

---

Subject: Re: Max 2008 Error Help  
Posted by [Gen\\_Blacky](#) on Wed, 01 Apr 2009 16:26:58 GMT  
[View Forum Message](#) <> [Reply to Message](#)

---

Try reinstalling the plugin that usually works if not reinstall 3ds max. I had to do that with 3ds max 8.

---

---

Subject: Re: Max 2008 Error Help  
Posted by [mr£Ä\\$Ä-z](#) on Wed, 01 Apr 2009 16:30:01 GMT  
[View Forum Message](#) <> [Reply to Message](#)

---

Put the max2w3d in the Scripts Startup folder

---