
Subject: i got a problem

Posted by [Distrbd21](#) on Sat, 18 Oct 2008 02:56:03 GMT

[View Forum Message](#) <> [Reply to Message](#)

I have a seagate sata barracuda hard drive and a hard drive kit to make it work.

I run a gateway solo laptop.

I install the drive in the kit plug it into usb windows does it's install thing.

I try to open the drive and it say's insert a cd well there is no place to put one lol.

It say's it's a protable media player.

How can i fix it to work and so i can install stuff on it?

if you need more info ask and i will give.

plz help ty

Subject: Re: i got a problem

Posted by [JPNOD](#) on Sat, 18 Oct 2008 04:59:05 GMT

[View Forum Message](#) <> [Reply to Message](#)

What operating system are you running?

Is it a USB hard drive. Or is it a IDE/SATA drive connected with a convertor to USB making it simmilair but you buy the drive and convertor seperate. This way is usally cheaper.

Did you check to see if the device is in the device manager and diskmanagement?
to do so:

go to start type in the run box or Vista search box. diskmgmt.msc

Subject: Re: i got a problem

Posted by [Distrbd21](#) on Sat, 18 Oct 2008 05:32:16 GMT

[View Forum Message](#) <> [Reply to Message](#)

It's a sata drive in an external case.

i use win xp geting sp3 now it has 2 hours left.

here are some pics of the settings.

where is device manage?

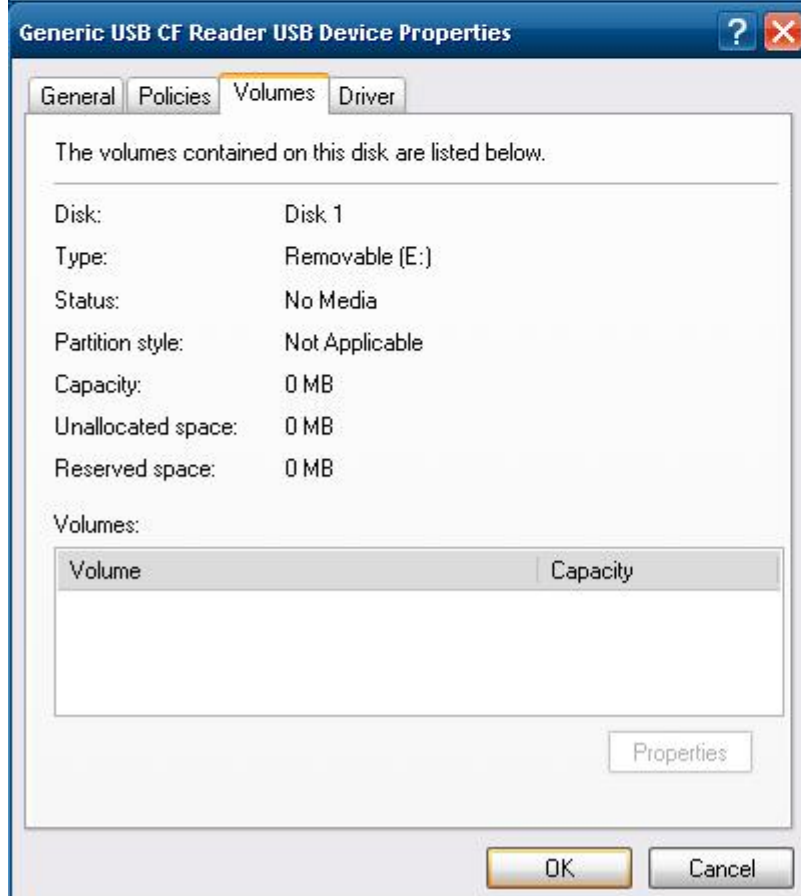
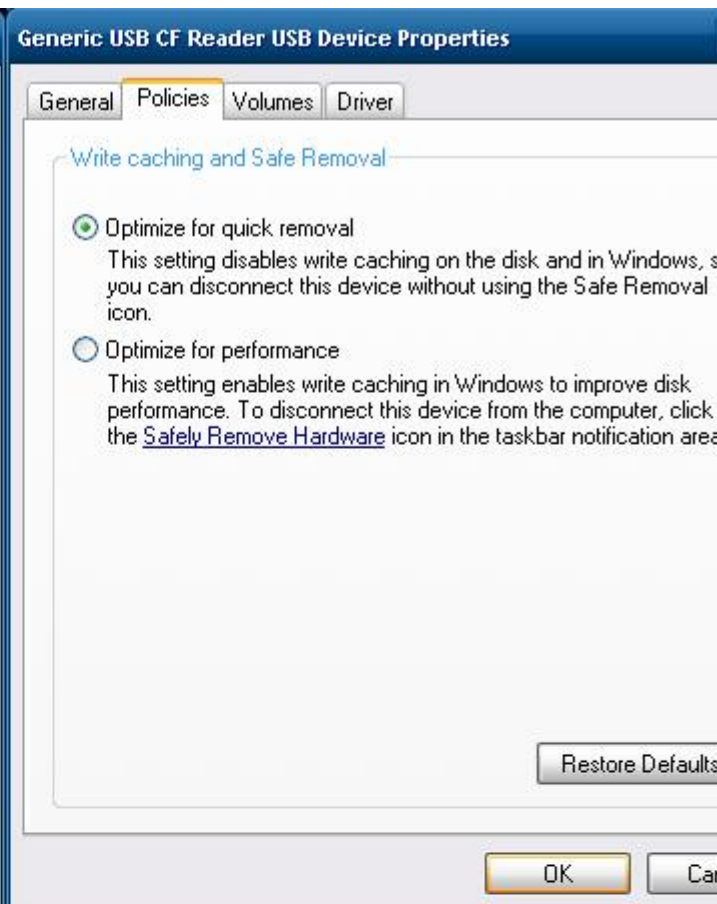
And yes it show's up in diskmanagement.

Anything else?

edit: on the kit it has place's for memory card's from camera's could that be causing it?

File Attachments

1) [untitled.JPG](#), downloaded 447 times



Subject: Re: i got a problem
Posted by [_SSnipe_](#) on Sat, 18 Oct 2008 06:13:30 GMT
[View Forum Message](#) <> [Reply to Message](#)

Maybe try fixing something using something here?
<http://www.seagate.com/www/en-us/support/downloads/>

Subject: Re: i got a problem
Posted by [Xylaquin](#) on Sat, 18 Oct 2008 07:55:41 GMT
[View Forum Message](#) <> [Reply to Message](#)

in disk manager, is it formatted?

device manager can be found by right-clicking My Comp>Properties>Hardware>Device Manager

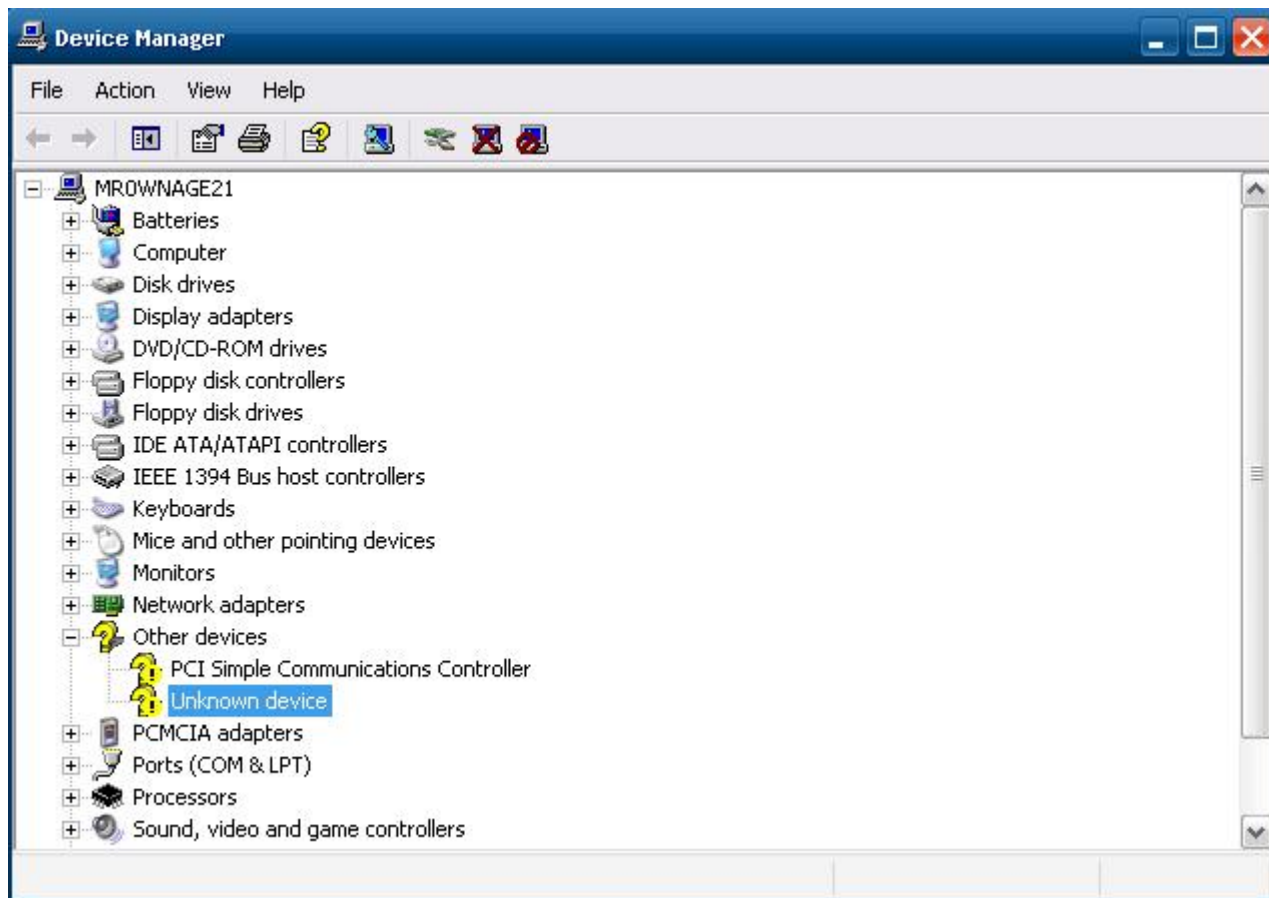
Notify us of any yellow exclamation marks, or any problems observed on the list that will appear.

Subject: Re: i got a problem
Posted by [Distrbd21](#) on Sat, 18 Oct 2008 17:11:09 GMT
[View Forum Message](#) <> [Reply to Message](#)

i don't think so.

File Attachments

1) [untitled.JPG](#), downloaded 387 times



Subject: Re: i got a problem

Posted by [Distrbd21](#) on Sun, 19 Oct 2008 18:57:35 GMT

[View Forum Message](#) <> [Reply to Message](#)

Sorry for DP but

does anyone know my prob?

I have called seagate and they said i would have to put it in a desktop well i don't got one.

Subject: Re: i got a problem

Posted by [JPNOD](#) on Sun, 19 Oct 2008 19:13:18 GMT

[View Forum Message](#) <> [Reply to Message](#)

Distrbd21 wrote on Sun, 19 October 2008 14:57Sorry for DP but

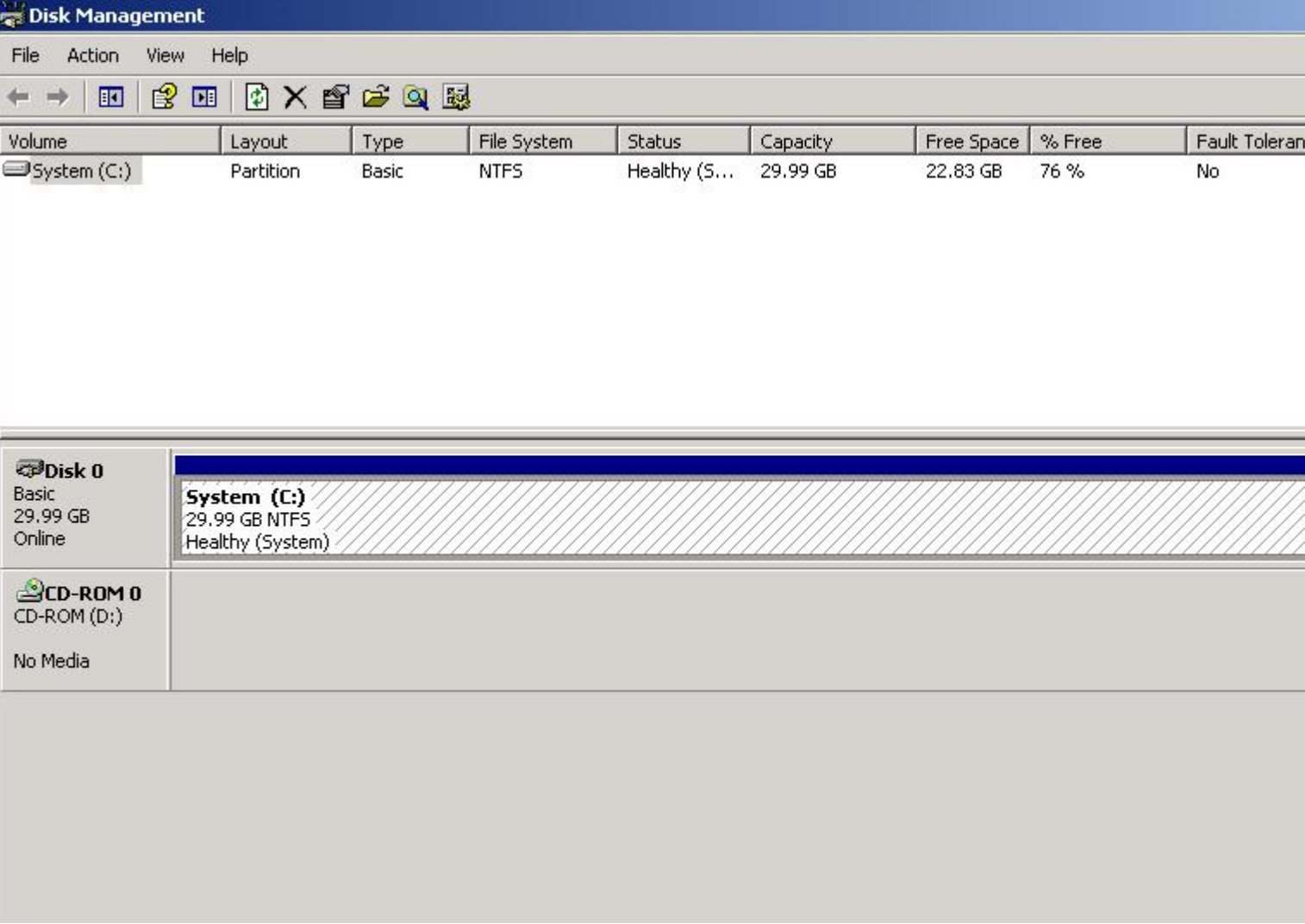
does anyone know my prob?

I have called seagate and they said i would have to put it in a desktop well i don't got one.

You need to get to this screen, I told you to do run --> diskmgmt.msc

File Attachments

1) [diskmgmt.JPG](#), downloaded 193 times



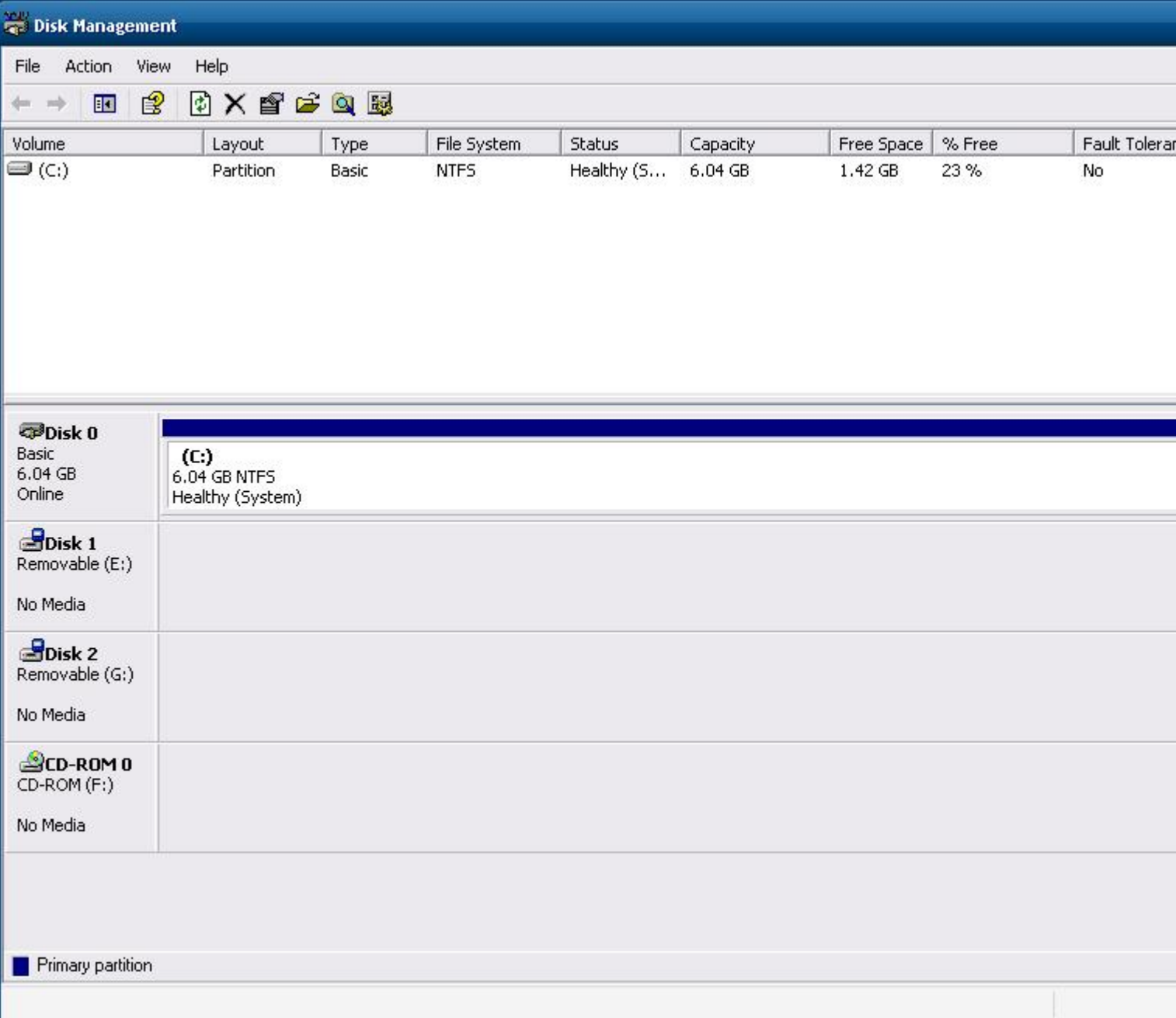
Subject: Re: i got a problem
Posted by [Distrbd21](#) on Mon, 20 Oct 2008 04:51:42 GMT
[View Forum Message](#) <> [Reply to Message](#)

there E and G is the paths.

I have try sea gate programs they don't support usb hard drive's

File Attachments

1) [untitled.JPG](#), downloaded 304 times



Subject: Re: i got a problem

Posted by [Distrbd21](#) on Thu, 23 Oct 2008 07:08:59 GMT

[View Forum Message](#) <> [Reply to Message](#)

Anyone plz i need this hd to run right i answered everyone's answer but no one post anymore

Subject: Re: i got a problem
Posted by [_SSnipe_](#) on Sat, 25 Oct 2008 19:18:25 GMT
[View Forum Message](#) <> [Reply to Message](#)

SSnipe wrote on Fri, 17 October 2008 23:13 Maybe try fixing something using something here?
<http://www.seagate.com/www/en-us/support/downloads/>

Subject: Re: i got a problem
Posted by [cnc95fan](#) on Sat, 25 Oct 2008 19:57:57 GMT
[View Forum Message](#) <> [Reply to Message](#)

Make sure it is set to Slave (if applicable)

Subject: Re: i got a problem
Posted by [_SSnipe_](#) on Sat, 25 Oct 2008 20:08:44 GMT
[View Forum Message](#) <> [Reply to Message](#)

SSnipe wrote on Sat, 25 October 2008 12:18 SSnipe wrote on Fri, 17 October 2008 23:13 Maybe try fixing something using something here?
<http://www.seagate.com/www/en-us/support/downloads/>
download the stuff here did it for me

Subject: Re: i got a problem
Posted by [djlaptop](#) on Sat, 25 Oct 2008 20:57:19 GMT
[View Forum Message](#) <> [Reply to Message](#)

Sounds like you don't have the right drivers installed. I'm guessing the CD that was provided came with the driver. You'll need to pull the driver off the CD on another computer with a CDROM. From there you can put it on a USB thumb drive or upload it to your email or one of the many upload services. Download it and install on your laptop.
