

---

Subject: LevelEdit

Posted by [KristyGirl](#) on Mon, 16 Jun 2008 07:54:46 GMT

[View Forum Message](#) <> [Reply to Message](#)

---

How do I move around in LevelEdit with a laptop? It does not seem to work for me.

---

---

Subject: Re: LevelEdit

Posted by [nopol10](#) on Mon, 16 Jun 2008 08:27:56 GMT

[View Forum Message](#) <> [Reply to Message](#)

---

Turn on the numpad key and press the keys that act as the numpad on the keyboard. Using the Fn key should also help.

---

---

Subject: Re: LevelEdit

Posted by [KristyGirl](#) on Mon, 16 Jun 2008 09:38:41 GMT

[View Forum Message](#) <> [Reply to Message](#)

---

It still does not work.

---

---

Subject: Re: LevelEdit

Posted by [Reaver11](#) on Mon, 16 Jun 2008 09:56:35 GMT

[View Forum Message](#) <> [Reply to Message](#)

---

plug in a mouse and you are set

---

---

Subject: Re: LevelEdit

Posted by [IronWarrior](#) on Mon, 16 Jun 2008 10:26:47 GMT

[View Forum Message](#) <> [Reply to Message](#)

---

Do you know how to move first in the LE?

You have clicked the XYZ buttons in the top first right?

---

---

Subject: Re: LevelEdit

Posted by [KristyGirl](#) on Mon, 16 Jun 2008 12:59:53 GMT

[View Forum Message](#) <> [Reply to Message](#)

---

Oh, thanks it actually works now. Thank you.

---

---

Subject: Re: LevelEdit  
Posted by [IronWarrior](#) on Mon, 16 Jun 2008 14:30:19 GMT  
[View Forum Message](#) <> [Reply to Message](#)

---

KristyGirl wrote on Mon, 16 June 2008 07:59Oh, thanks it actually works now. Thank you.

You are welcome.

---

---

Subject: Re: LevelEdit  
Posted by [R315r4z0r](#) on Mon, 16 Jun 2008 14:31:37 GMT  
[View Forum Message](#) <> [Reply to Message](#)

---

IronWarrior wrote on Mon, 16 June 2008 06:26You have clicked the XYZ buttons in the top first right?  
Clicking those are for moving objects on the map on the X, Y, and Z axis... not your camera.

---

---

Subject: Re: LevelEdit  
Posted by [reborn](#) on Mon, 16 Jun 2008 14:57:58 GMT  
[View Forum Message](#) <> [Reply to Message](#)

---

That isn't true, click the camera icon or press f5, then you're free to use the x,y and z button to move your camera around.

---

---

Subject: Re: LevelEdit  
Posted by [KristyGirl](#) on Mon, 16 Jun 2008 17:54:43 GMT  
[View Forum Message](#) <> [Reply to Message](#)

---

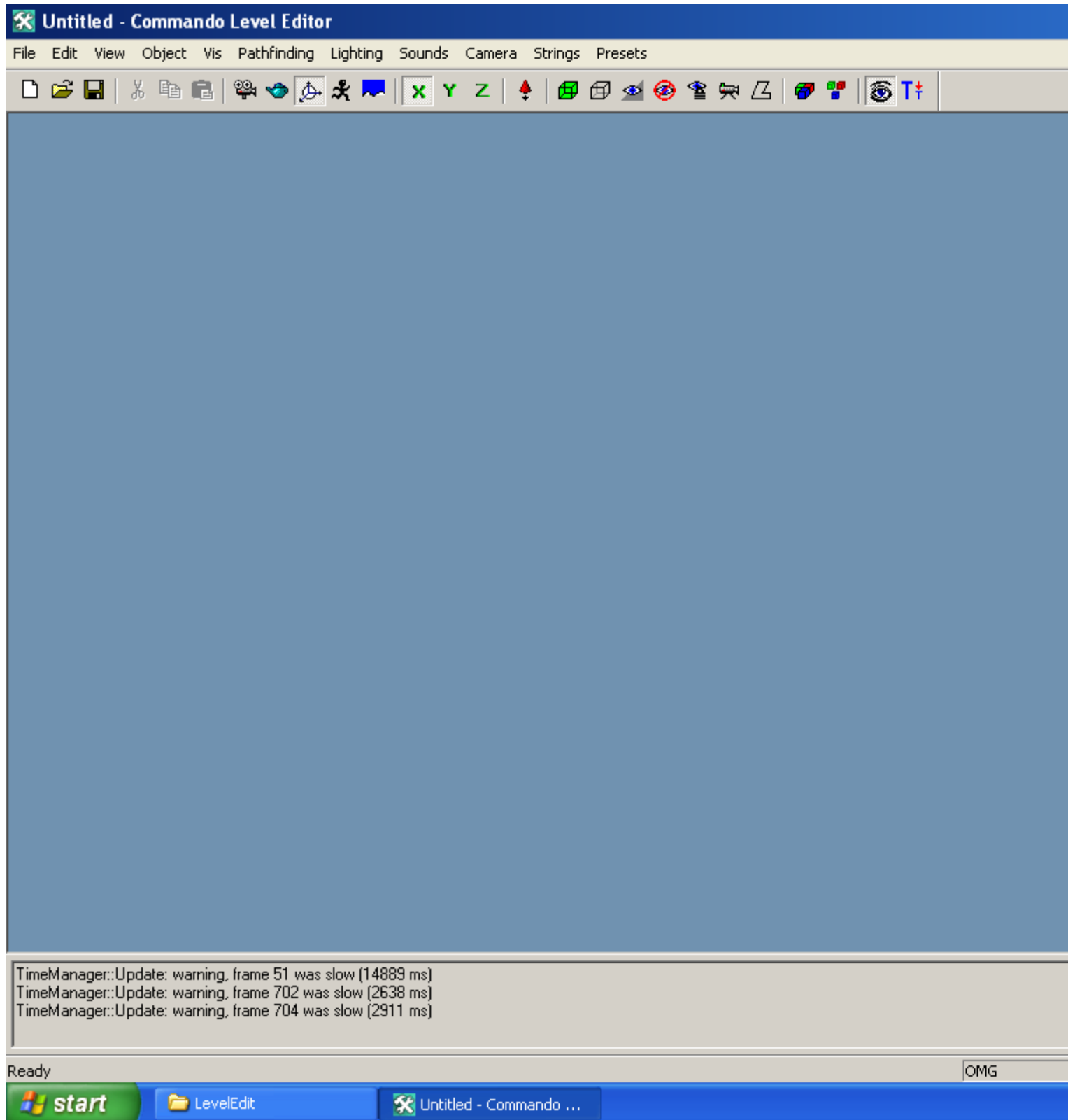
Okay, nevermind. It is not working. What am I doing wrong? I attached a screenshot below.

---

### File Attachments

1) [LevelEdit\\_Help.PNG](#), downloaded 356 times

---



---

Subject: Re: LevelEdit  
Posted by [reborn](#) on Mon, 16 Jun 2008 18:48:32 GMT

[View Forum Message](#) <> [Reply to Message](#)

---

Press f5, this will take you to the camera tool, Or just click the little video recorder looking symbol.

---