
Subject: CLOSED well not closed butdont need no more help on this

Posted by [cpjok](#) on Sat, 22 Dec 2007 00:01:25 GMT

[View Forum Message](#) <> [Reply to Message](#)

Each time I Make A Tunnel And Copy The Terrian And Tunnel Together It Cuts Out Abit but if i try and add more it only cuts 1 piece out of the terrian and dosent mak a whole for the tunnel

Subject: Re: Im Trying To Make A Map But

Posted by [cpjok](#) on Sat, 22 Dec 2007 00:06:57 GMT

[View Forum Message](#) <> [Reply to Message](#)

This Is It With Tunnels

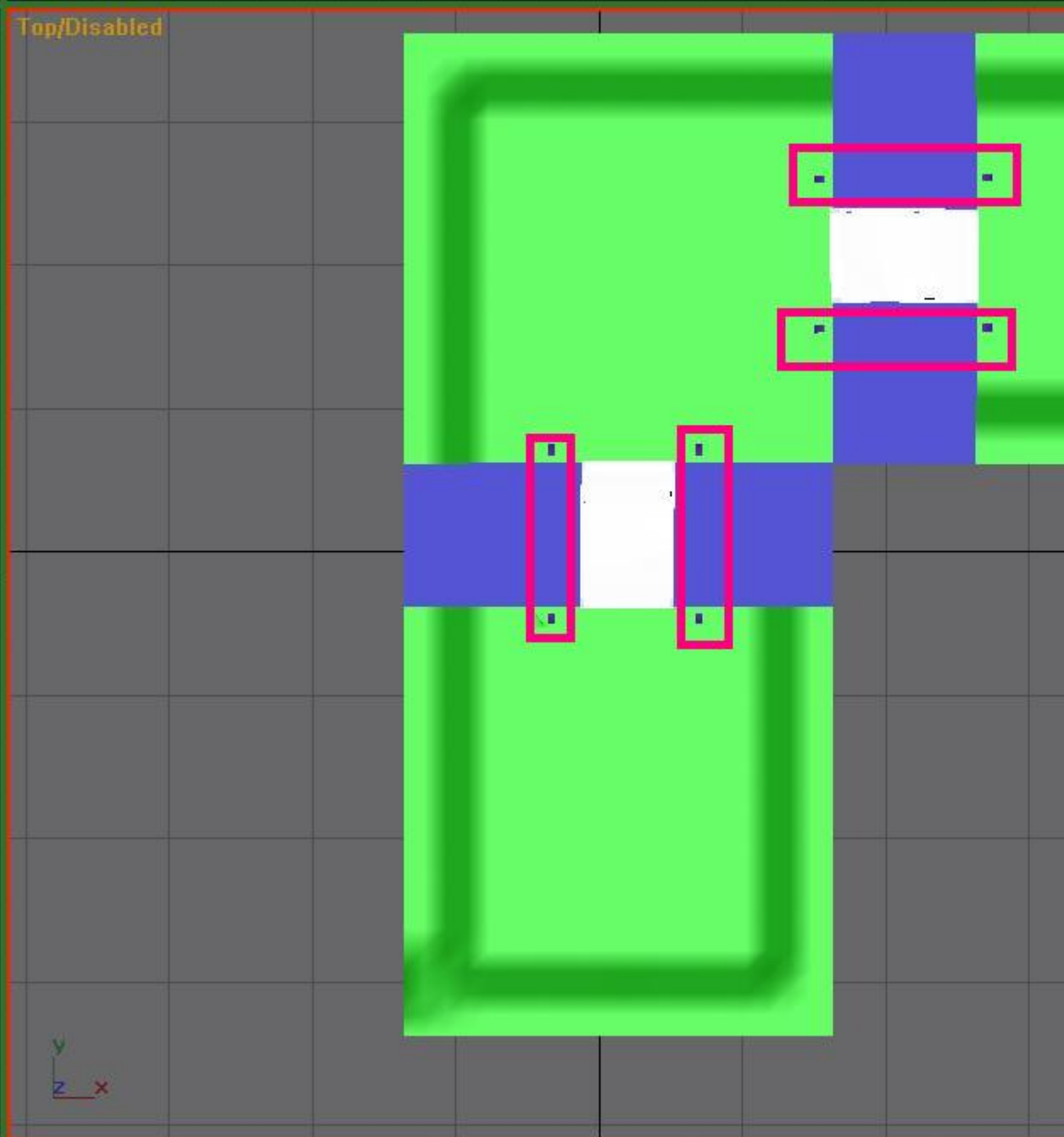
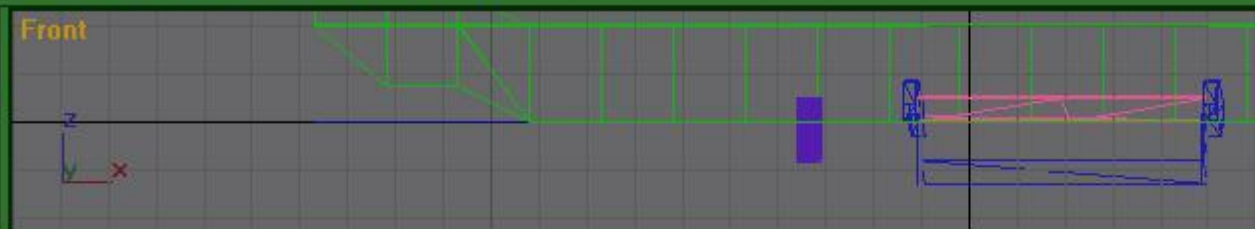
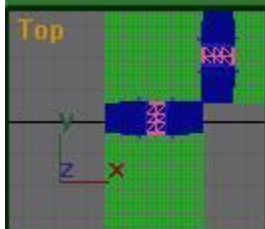
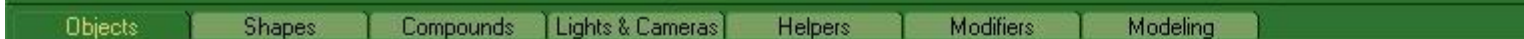
An d This Is It After I Deleted Tunnel's

Look Were I Marked Them It Dosent Cut Whole In Ground

What Do I Do

File Attachments

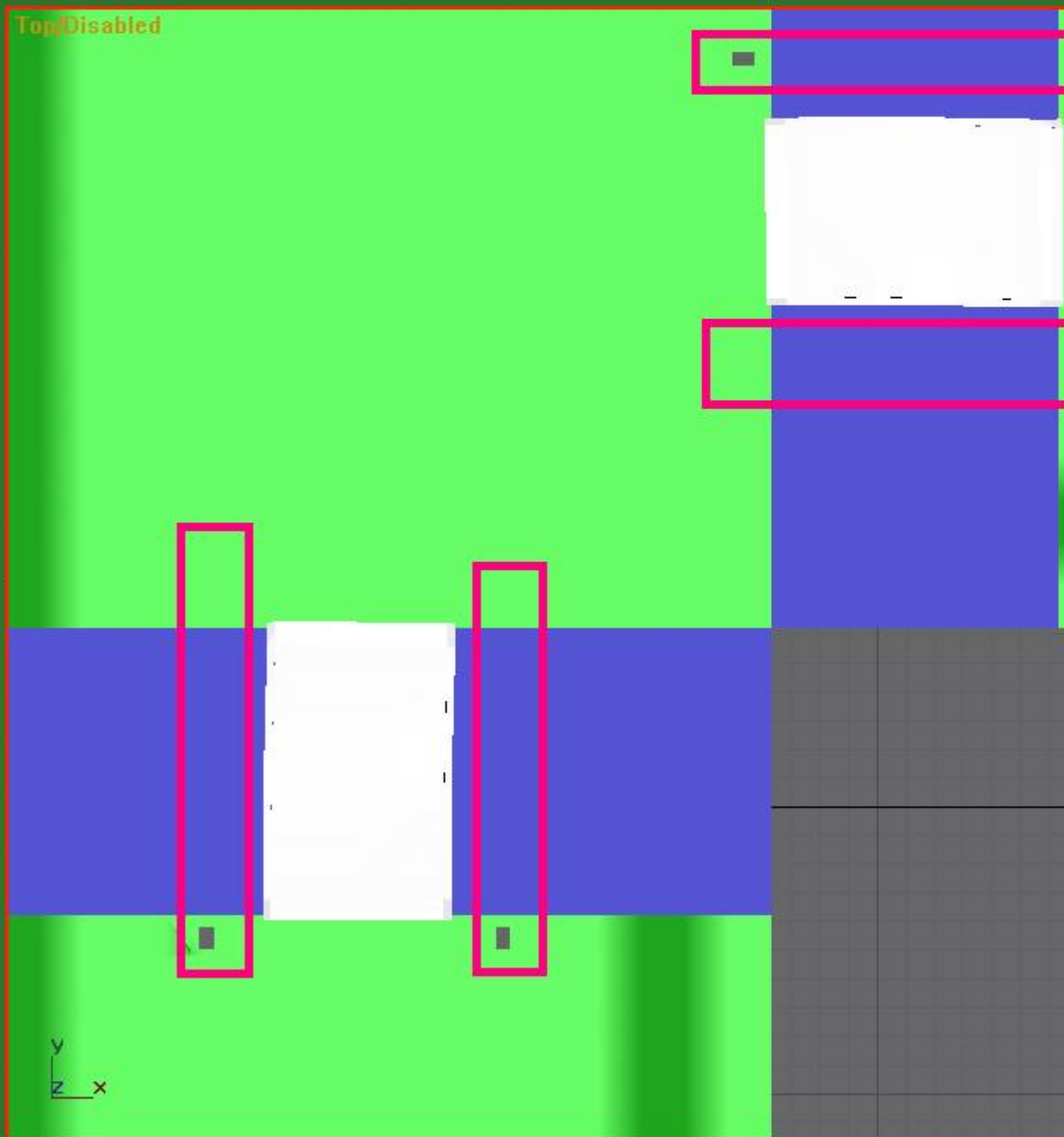
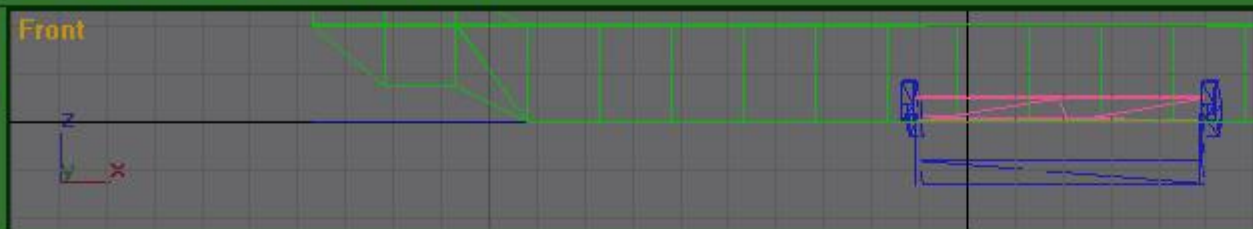
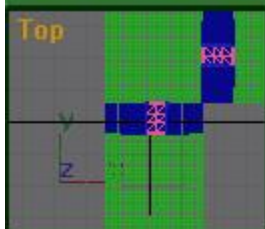
1) [1st.JPG](#), downloaded 455 times



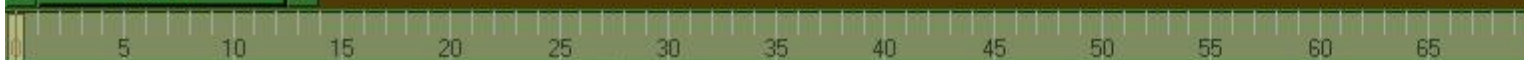
2) [2nd.JPG](#), downloaded 464 times



Objects Shapes Compounds Lights & Cameras Helpers Modifiers Modeling



< 0 / 100 >



Subject: Re: Im Trying To Make A Map But
Posted by [cpjok](#) on Sat, 22 Dec 2007 01:14:33 GMT
[View Forum Message](#) <> [Reply to Message](#)

Think I Have Done It But nyway No ed For Help Mod May Deleete Ths Post

Subject: Re: Tunnel Help And On the Tutorial On Renhelp It Dosent Say How To Do This
Posted by [Oblivion165](#) on Sat, 22 Dec 2007 01:19:18 GMT
[View Forum Message](#) <> [Reply to Message](#)

Before cutting attach all the cut boxes together. Also make sure they are converted to poly.

Subject: Re: Tunnel Help And On the Tutorial On Renhelp It Dosent Say How To Do This
Posted by [cpjok](#) on Sat, 22 Dec 2007 03:18:47 GMT
[View Forum Message](#) <> [Reply to Message](#)

i got it working in end and i have inishd my map just need to do LE bit now but its late so ill try tomorrow

if you dont mind to answeare this if you know
How do i get the silo's to work
