
Subject: CLOSED well not closed butdont need no more help on this

Posted by [cpjok](#) on Sat, 15 Dec 2007 14:55:06 GMT

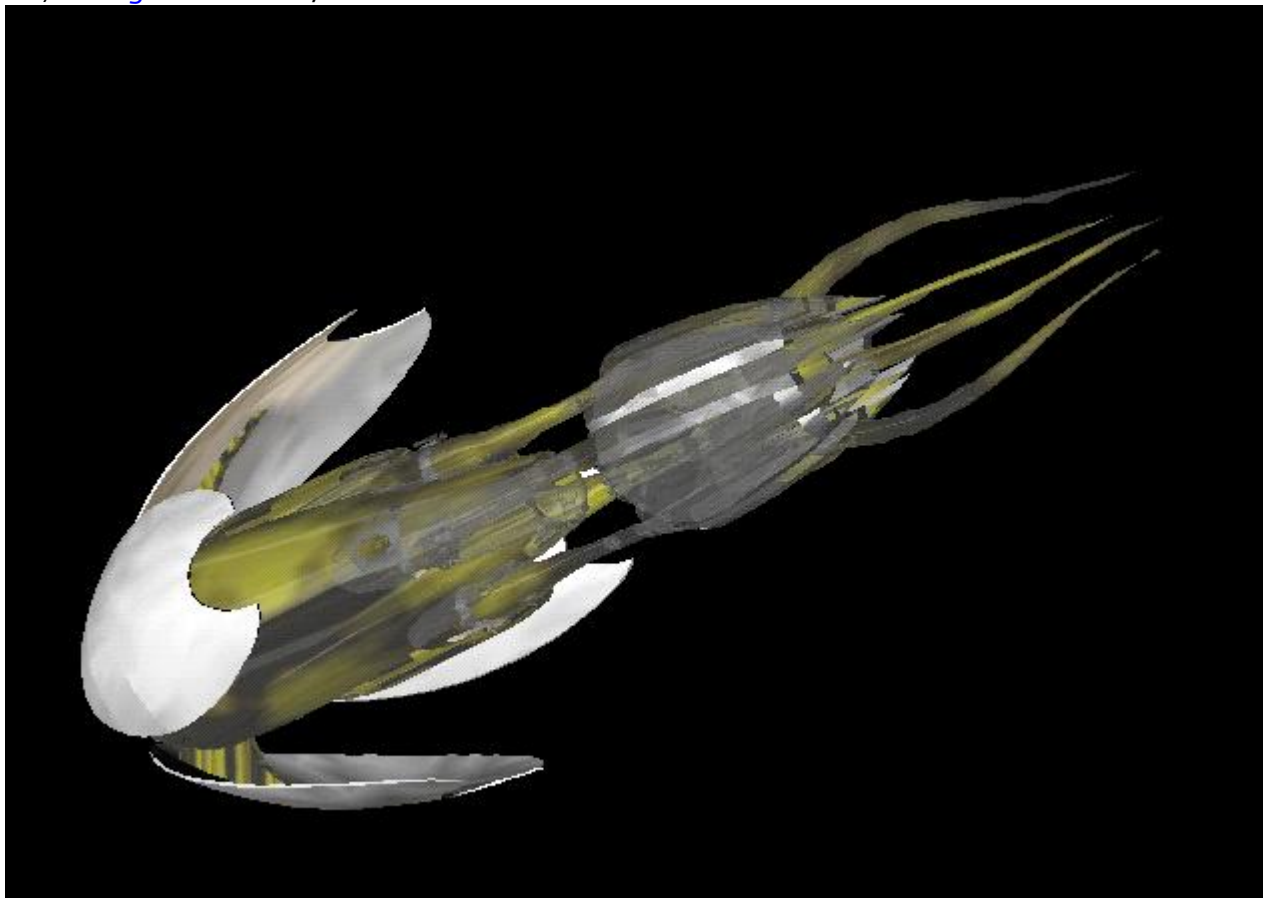
[View Forum Message](#) <> [Reply to Message](#)

i have been trying each time i export it the model dosent work

This is the model it animates aswell

File Attachments

1) [Object.JPG](#), downloaded 344 times



Subject: Re: how do i export a model in 3ds max to w3d

Posted by [cpjok](#) on Sat, 15 Dec 2007 16:03:02 GMT

[View Forum Message](#) <> [Reply to Message](#)

anyone know how i can get it to w3d and with it working

Subject: Re: how do i export a model in 3ds max to w3d
Posted by [cnc95fan](#) on Sat, 15 Dec 2007 16:41:57 GMT
[View Forum Message](#) <> [Reply to Message](#)

AFAIK the Max exporter doesn't work properly.

Subject: Re: how do i export a model in 3ds max to w3d
Posted by [cpjok](#) on Sat, 15 Dec 2007 17:05:16 GMT
[View Forum Message](#) <> [Reply to Message](#)

so how do i make a model into a w3d file

Subject: Re: how do i export a model in 3ds max to w3d
Posted by [Slave](#) on Sat, 15 Dec 2007 18:06:19 GMT
[View Forum Message](#) <> [Reply to Message](#)

Get max 7 or 8 and http://www.renhelp.net/downloads/W3D_Exporter.zip
For more info go to renhelp's download section.

Subject: Re: how do i export a model in 3ds max to w3d
Posted by [Oblivion165](#) on Sat, 15 Dec 2007 19:11:50 GMT
[View Forum Message](#) <> [Reply to Message](#)

cnc95fan wrote on Sat, 15 December 2007 11:41AFAIK the Max exporter doesn't work properly.

Max Exporter works 100%.

Subject: Re: how do i export a model in 3ds max to w3d
Posted by [cnc95fan](#) on Sat, 15 Dec 2007 19:18:22 GMT
[View Forum Message](#) <> [Reply to Message](#)

Caused my Max to crash. Engraving it into the bounds of virtual memory, forever. (its fucked up now, and I've hard of similar cases to mine).
