

---

Subject: Can't play single player >.<

Posted by [heydiddly](#) on Sun, 21 Oct 2007 19:52:27 GMT

[View Forum Message](#) <> [Reply to Message](#)

---

First off I think I'll say how GODDAM ANNOYING vista is!

Moving on... I load the game, when it says insert data disk I cancel through to main menu. I click single player, tutorial (never played it before, me nooby), it loads the tutorial, and then... poof... the green loading bar starts filling up, then the game suddenly shuts down and sends me to desktop. No error messages, no explanations. I tried it on all other game modes and the same thing happens for all of them. I put a pic of the loading screen for anyone kind enough to actually help. I can get onto westwood online screens, but noones on there anyway (why?).

This game better be worth it, I spent about 3 hours just getting it to even turn on...

---

### File Attachments

1) [furthest point.jpg](#), downloaded 542 times

---

## COMMANDO TRAINING

### BASIC OPERATIONS TRAINING FOR GDI COMMANDOS

This operational training session will instruct you in the fundamentals of maneuvering, field equipment, and battlefield awareness. If you follow your instructors carefully, you should then be prepared for almost any combat situation. Good luck!

Hint: Use the ACTION key (Defaults to E) to enter vehicles.



#### PRESS F1 FOR HELP

Press F1 at any time for HELP with the basic controls and on-screen information.



#### PRESS M TO VIEW THE MAP

Press M to view an overhead map of the areas you have already explored.



#### PRESS ESC FOR OPTIONS AND DATA LINKS

SAVE, LOAD and game OPTIONS are accessed from the bottom of this screen.



#### PRESS O TO VIEW OBJECTIVES

Updated descriptions of your Objectives can be viewed by pressing the O key.



---

Subject: Re: Can't play single player >.<

Posted by [Carrierll](#) on Sun, 21 Oct 2007 20:53:51 GMT

[View Forum Message](#) <> [Reply to Message](#)

---

Tehehehe. You did <http://www.game-maps.net/index.php?action=category&id=79>Update?[url]

Two:

Go to C:\westwood\renegade and find "game.exe"

Right click on it, click properties, then go to the "Compatability" tab.

Check the box marked "Run this program in compatability mode for" and in the drop-down box,

choose Windows XP Service Pack 2

Then at the bottom of that tab, check "Run as administrator" then click Apply, and then OK

That work?

Edit- The single player is OK, but the real fun is to be had online, From the main menu -

Multiplay Online > Westwood Online > Advance Game listings

\*A box appears\*

Enter a nickname (Up to nine letters and numbers)

Then a password (EXACTLY eight letters and/or numbers)

Then, press login, if it's not taken, it's yours, have fun!

---

Subject: Re: Can't play single player >.<  
Posted by [heydiddly](#) on Sun, 21 Oct 2007 21:11:18 GMT  
[View Forum Message](#) <> [Reply to Message](#)

---

<http://www.game-maps.net/index.php?action=category&id=79>]... never heard of it. O.o

Mmmm I was already running game.exe and game2.exe on compatibility mode, administrator, etc so no joy there.

And no joy for the online solution either, because I was already logged in with the account I have from my other C&C game (I <3 C&C ).

Besides, if I go straight online I be punched fulla "z0mg u n00b lmao!", waaaaaaaaaaaaaaaaa!

I don't get why vista wrecks renegade anyways O.o all my other equally old C&C games work fine, some with compatibilty mode.

While I'm here, wth is this thing meant to be?!! (attachment)

MY BRAIN HURTS! \*sniffle\*

#### File Attachments

1) [jibberish screen.jpg](#), downloaded 416 times



---

Subject: Re: Can't play single player >.<  
Posted by [CarrierII](#) on Sun, 21 Oct 2007 21:53:50 GMT  
[View Forum Message](#) <> [Reply to Message](#)

---

THat's gamespy, you can just ignore it. Err.. the DX9 scripts muck up single player, so that's not going to help...

INstall XP?

---

---

Subject: Re: Can't play single player >.<



Posted by [heydiddly](#) on Sun, 21 Oct 2007 22:16:03 GMT

[View Forum Message](#) <> [Reply to Message](#)

---

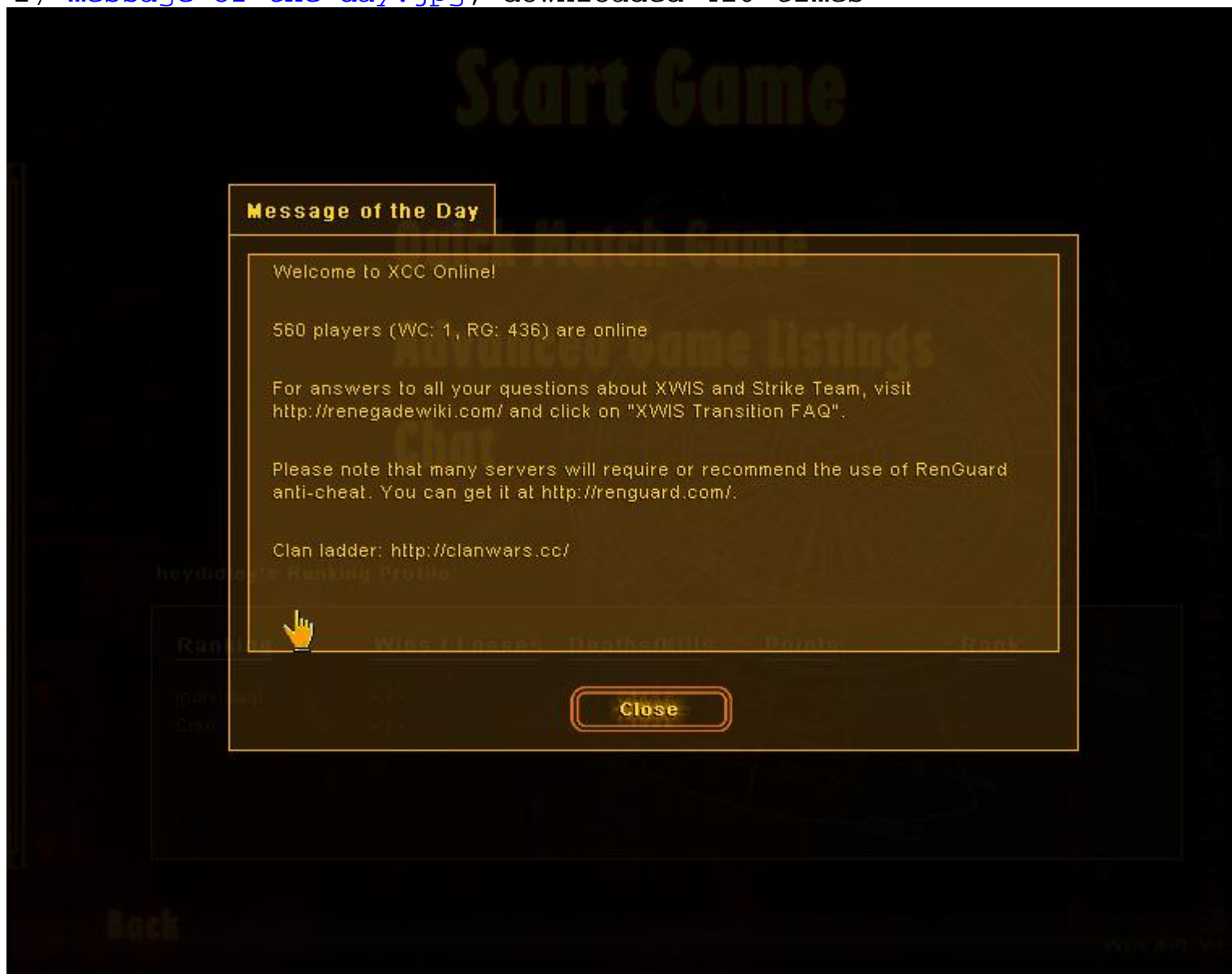
For all its many, many, many, many... many, many faults, I actually quite like vista, and anyway my XP disk is ummmm... not entirely \*cough\* legal \*cough\*.

So if single player is a lost cause... maybe I can save my online. When I go into the online lobby it's completely empty... considering this is mid-afternoon for the americans, who seem to play non-stop... it seems a bit wierd that NO ONE is on, and wierder still, the "Welcome to "XWIS" box that comes up says there's 600ish players online. I've unblocked it from windows firewall, windows defender etc, I'm gonna go insane soon! Why me!

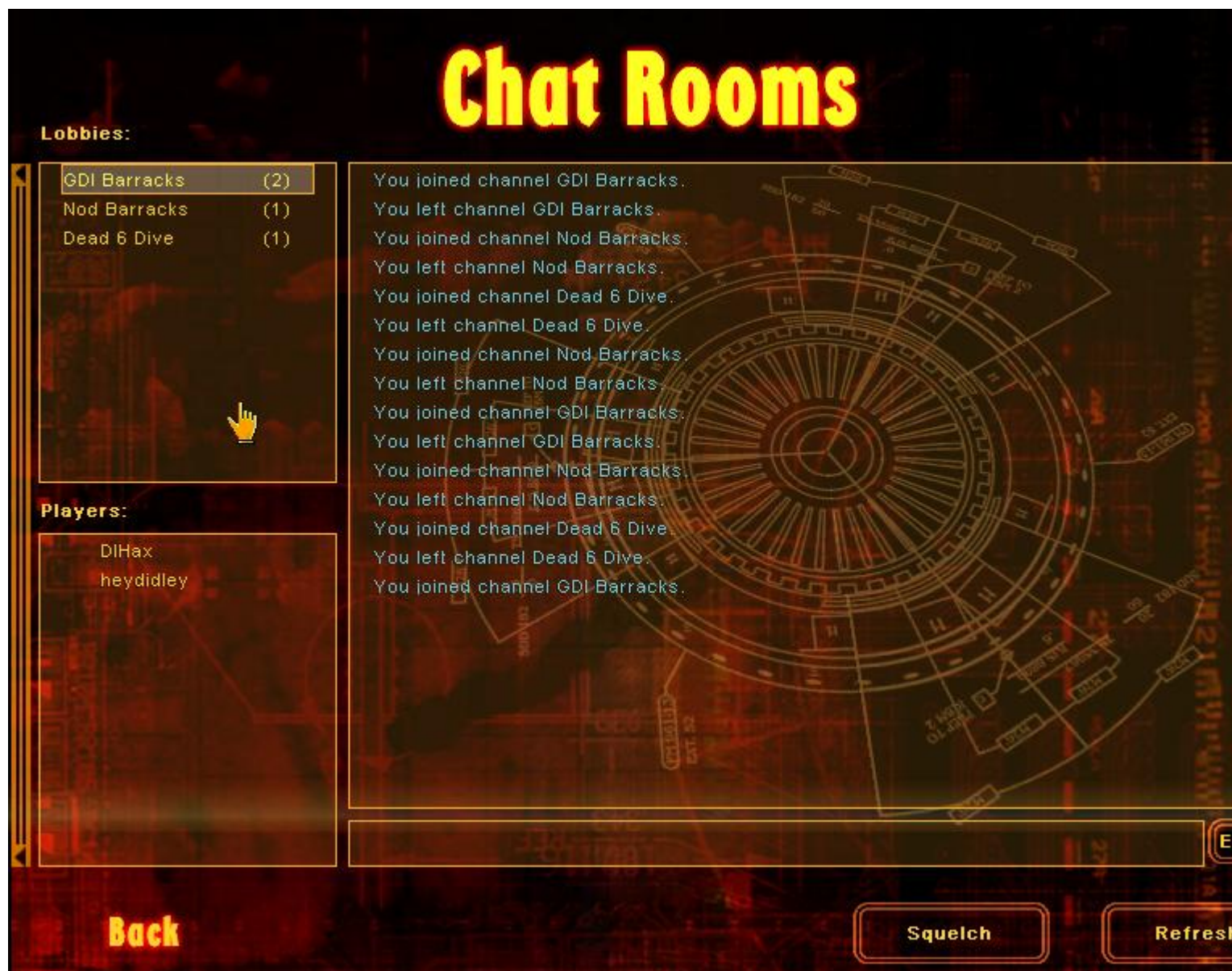
### File Attachments

---

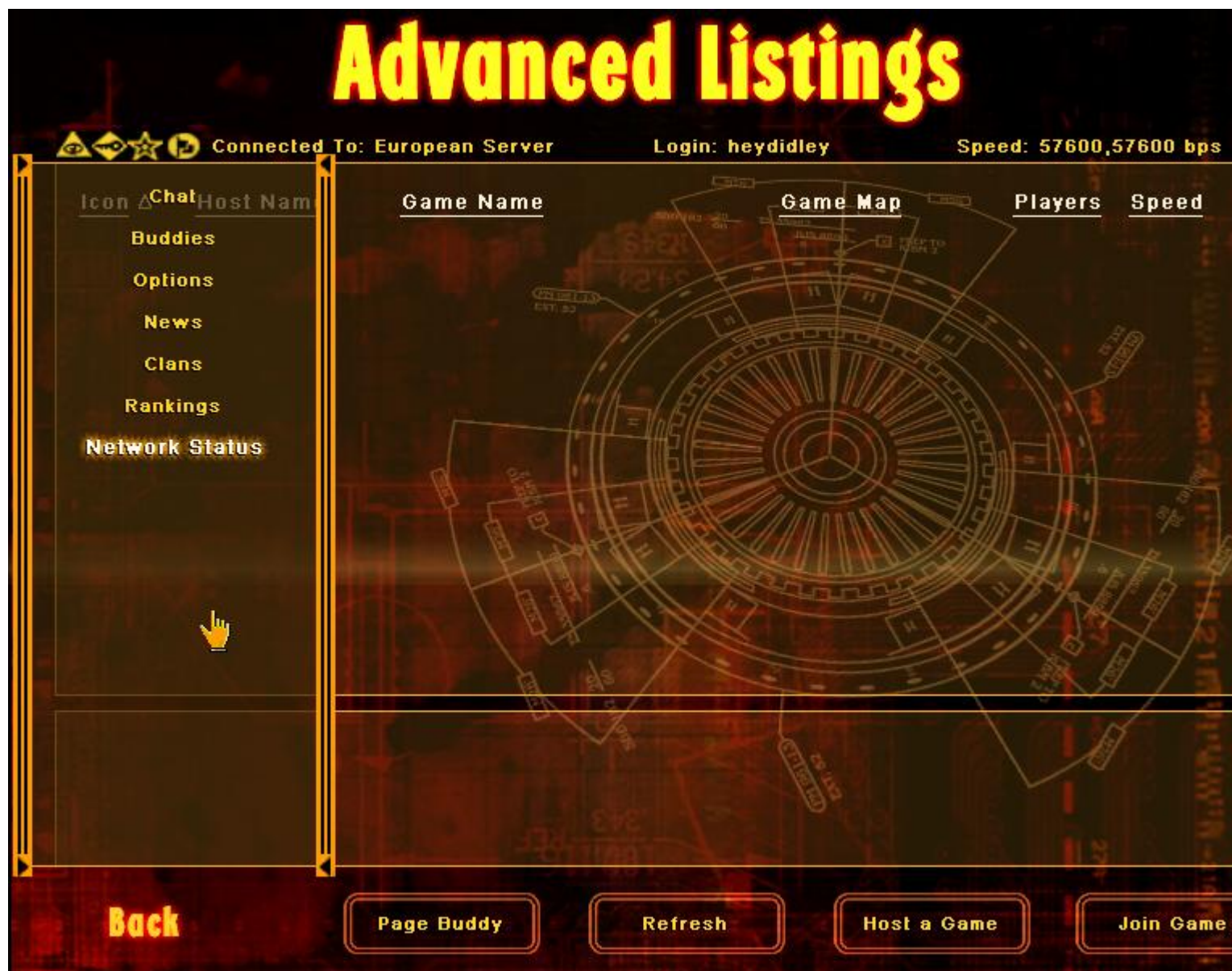
1) [message of the day.jpg](#), downloaded 410 times



2) [chat lobby.jpg](#), downloaded 409 times



3) [game lobby.jpg](#), downloaded 404 times



---

Subject: Re: Can't play single player >.<  
Posted by [Carrierll](#) on Sun, 21 Oct 2007 22:23:52 GMT  
[View Forum Message](#) <> [Reply to Message](#)

---

Right. Your login and pass etc are fine.

The chat lobby is almost always empty.

Hmm... can you find your hosts file and paste it?

---

---



Subject: Re: Can't play single player >.<  
Posted by [heydiddly](#) on Sun, 21 Oct 2007 22:35:54 GMT  
[View Forum Message](#) <> [Reply to Message](#)

---

Ah... point me in the right direction? Lol

While I searched my directory though, I did find a crashdump. No idea when or why it got there but maybe it'll help you? I hope.

Anyway, I g2g for a while, back later... good luck.

#### File Attachments

1) [crashdump.txt](#), downloaded 174 times

---

---

Subject: Re: Can't play single player >.<  
Posted by [Ryu](#) on Sun, 21 Oct 2007 23:24:27 GMT  
[View Forum Message](#) <> [Reply to Message](#)

---

Insert your Renegade disk in your Disk Drive and try again.

---

---

Subject: Re: Can't play single player >.<  
Posted by [heydiddly](#) on Sun, 21 Oct 2007 23:43:00 GMT  
[View Forum Message](#) <> [Reply to Message](#)

---

K, well game disk might as well not exist for all the good it does...

When I put data disk in like it asks, only difference is I get to see the intro movie... wahoo I found some fresh wierd stuff afterwards though.

I have TWO renegade directories somehow... there's C-westwood-renegade, and there's c-westwoodrenegade. No idea how the 2nd 1 got there, but it's got all the Renguard stuff in it and that stuff's now gone from 1st directory, somehow it moved itself, gotta love windows . But should I move all the Renguard stuff back into 1st directory?

Oh and is it normal that game.exe causes error when loaded from so I have to use game2.exe instead? Sods law only exists for me... lol

---

---

Subject: Re: Can't play single player >.<  
Posted by [Goztow](#) on Mon, 22 Oct 2007 07:02:56 GMT  
[View Forum Message](#) <> [Reply to Message](#)

---

C:\WINDOWS\SYSTEM32\DRIVERS\ETC <- a file called "hosts" : open it with notepad and copy-paste what's in it in here.



Also: do you have the first decade or normal ren? The thing with the two directories is surely not good. If we can't help you with the hosts-file, then I advise you to uninstall ren, delete both those directories and reinstall in a different directory again, following the 9 steps in the sticky in the "renegade client"-subforum.

---

---

Subject: Re: Can't play single player >.<

Posted by [heydiddly](#) on Mon, 22 Oct 2007 14:57:27 GMT

[View Forum Message](#) <> [Reply to Message](#)

---

# Copyright (c) 1993-2006 Microsoft Corp.

#

# This is a sample HOSTS file used by Microsoft TCP/IP for Windows.

#

# This file contains the mappings of IP addresses to host names. Each

# entry should be kept on an individual line. The IP address should

# be placed in the first column followed by the corresponding host name.

# The IP address and the host name should be separated by at least one

# space.

#

# Additionally, comments (such as these) may be inserted on individual

# lines or following the machine name denoted by a '#' symbol.

#

# For example:

#

# 102.54.94.97 rhino.acme.com # source server

# 38.25.63.10 x.acme.com # x client host

127.0.0.1 localhost

::1 localhost

I have normal ren, and I hope those 9steps will be faster 2nd time round, good job on them though.

---

---

Subject: Re: Can't play single player >.<

Posted by [Goztow](#) on Mon, 22 Oct 2007 18:47:53 GMT

[View Forum Message](#) <> [Reply to Message](#)

---

Hosts-file is ok, only thing left to do is reinstall .

---

Subject: Re: Can't play single player >.<  
Posted by [heydiddly](#) on Mon, 22 Oct 2007 20:38:07 GMT  
[View Forum Message](#) <> [Reply to Message](#)

---

Ewwwww I was afraid you'd say that... well, several more hours gone for me. :S I'll tell you when I'm done.

---

---

Subject: Re: Can't play single player >.<  
Posted by [heydiddly](#) on Mon, 22 Oct 2007 21:42:35 GMT  
[View Forum Message](#) <> [Reply to Message](#)

---

\*SIGH\*

Game turned on without scripts343, but doesn't now that I've installed them... plz don't tell me I have to reinstall whole game AGAIN and there's a way of just uninstalling the scripts?

I noticed why there was 2 directories. In the renguard setup when it asks where to install, it's default is C:/Westwood\Renegade, the backslash isn't recognised by the system so it made a new directory called C:/WestwoodRenegade with all my renguard stuff in it... mystery solved, maybe you could warn someone about that in your install guide sticky? Also on step 5, the patch link doesn't work, I had to find somewhere new to download it from (not difficult, just annoying) so maybe you could put that in the sticky as well.

To be honest, I have a nasty feeling that the renguard being in the wrong directory might have caused this whole big screw-up... all because of 1 little backslash... jeez.

---

---

Subject: Re: Can't play single player >.<  
Posted by [Goztow](#) on Tue, 23 Oct 2007 06:51:47 GMT  
[View Forum Message](#) <> [Reply to Message](#)

---

Do you have directx9 installed? Scripts344 require directx9c to be installed, otherwise you'll get a black screen.

You can uninstall scripts 344 by renaming scripts2.dll -> scripts.dll and deleting scripts.dll and shaders.dll and 3d8.dll (if I remember correctly).

---

---

Subject: Re: Can't play single player >.<  
Posted by [heydiddly](#) on Tue, 23 Oct 2007 12:23:12 GMT  
[View Forum Message](#) <> [Reply to Message](#)

---

I'm running dx10, which is SUPPOSED to be better... stupid microsoft

Well I'll get rid of scripts and see what happens, can always put them back if I need to.

---