
Subject: whos comp sys is the best!

Posted by [HORQWER](#) on Sat, 20 Oct 2007 23:57:34 GMT

[View Forum Message](#) <> [Reply to Message](#)

mine

:

please post ur too! :biggrin

File Attachments

1) [compsys.JPG](#), downloaded 1620 times



Subject: Re: whos comp sys is the best!

Posted by [john22395](#) on Sun, 21 Oct 2007 00:06:36 GMT

[View Forum Message](#) <> [Reply to Message](#)

Main Control Server (USA-Black Shark Studios Main Server)

300 Gb Hard Drive Memory

3 Gb RAM

Intel Duo Core Processor

Belkin Wireless Card
Custom Case
Linux
Generic Fan
(Unknown Video Card)

Registered To: John Lett
Company: Black Shark Studios, www.blacksharkstudios.com

Subject: Re: whos comp sys is the best!
Posted by [Ryu](#) on Sun, 21 Oct 2007 00:16:02 GMT
[View Forum Message](#) <> [Reply to Message](#)

Urr.. My processor is running at 994MHz?! LOL!

I think I'm going to have to format. :\

Subject: Re: whos comp sys is the best!
Posted by [cmatt42](#) on Sun, 21 Oct 2007 00:22:27 GMT
[View Forum Message](#) <> [Reply to Message](#)

Ryu wrote on Sat, 20 October 2007 19:16Urr.. My processor is running at 994MHz?! LOL!

I think I'm going to have to format. :\
AMD? It lowers its clock at low load to save power. It's normal.

Subject: Re: whos comp sys is the best!
Posted by [Ryu](#) on Sun, 21 Oct 2007 00:26:17 GMT
[View Forum Message](#) <> [Reply to Message](#)

cmatt42 wrote on Sat, 20 October 2007 19:22Ryu wrote on Sat, 20 October 2007 19:16Urr.. My processor is running at 994MHz?! LOL!

I think I'm going to have to format. :\
AMD? It lowers its clock at low load to save power. It's normal.

Nice guessing hacks there man.

Ahh, There we go!

AMD Athlon 3200+ 1.99GHz 512MB o' ram, ATi Radeon X550

140GB Hard Drive Disk.

Subject: Re: whos comp sys is the best!

Posted by [Drkpwn3r](#) on Sun, 21 Oct 2007 00:33:28 GMT

[View Forum Message](#) <> [Reply to Message](#)

Processor: AMD Sempron 3400+ 2.0GHz (Socket AM2)

Memory: 1GB DDR2 (PC-5300)

Graphics: ATi All-in-Wonder x1800 XL (256MB GDDR3)

HDD: 500GB SATA w/ 16MB cache @ 7200RPM

OS: Dual-boot w/ Vista + XP

Eh, I love it.

Subject: Re: whos comp sys is the best!

Posted by [JeepRubi](#) on Sun, 21 Oct 2007 01:07:48 GMT

[View Forum Message](#) <> [Reply to Message](#)

I'm sure there's something better but:

-Core 2 Duo e6300 @ 1.86ghz

-2gb OCZ Platnum 800mhz

-EVGA 8800gts 320Mb

-EVGA 650i Ultra Motherboard

Subject: Re: whos comp sys is the best!

Posted by [sadukar09](#) on Sun, 21 Oct 2007 01:33:33 GMT

[View Forum Message](#) <> [Reply to Message](#)

Pentium D 2.66Ghz 2x1MB L2 Cache

2GB DDR400 SDRAM Crucial

250GB Western Digital 7200RPM

Sapphire ATI Radeon X1550 (Omega Drivers)

Intel D101GGC

Subject: Re: whos comp sys is the best!

Posted by [Matix101](#) on Sun, 21 Oct 2007 01:36:34 GMT

[View Forum Message](#) <> [Reply to Message](#)

Pentium D 960 (3.6Ghz 2x 2MB L2 Cache)

2GB Ram DDR2

BFG tech 7950GT 512mb Factory Overclocked

300GB SATA
120GB IDE

Subject: Re: whos comp sys is the best!
Posted by [Oblivion165](#) on Sun, 21 Oct 2007 01:36:58 GMT
[View Forum Message](#) <> [Reply to Message](#)

Intel Core 2 Duo E6550 2.33Ghz
4gb of RAM
GeForce 8600GTS 256mb x16
RealTek 7.1 HD Audio
22inch Acer 16:9 LCD.

EDIT: Hard drives combined 1050gb

Subject: Re: whos comp sys is the best!
Posted by [HORQWER](#) on Sun, 21 Oct 2007 02:00:19 GMT
[View Forum Message](#) <> [Reply to Message](#)

when every one will finish posting their sys info we will have a vote
who has the best comp

Subject: Re: whos comp sys is the best!
Posted by [nopol10](#) on Sun, 21 Oct 2007 02:15:38 GMT
[View Forum Message](#) <> [Reply to Message](#)

Intel Core 2 Duo 6300 1.86ghz
2GB RAM
ATI X1550 512mb Hypermemory (up to 896mb)
320GB Hard Drive
Acer 19 inch 16:10 monitor

Subject: Re: whos comp sys is the best!
Posted by [HORQWER](#) on Sun, 21 Oct 2007 02:41:05 GMT
[View Forum Message](#) <> [Reply to Message](#)

every one has a better comp sys then me
but i'm getting a new video card
here is the info
NEW BFG Nvidia GeForce 7900GS 7900 GS PCI-E Video Card

Subject: Re: whos comp sys is the best!
Posted by [Dave Anderson](#) on Sun, 21 Oct 2007 04:03:56 GMT
[View Forum Message](#) <> [Reply to Message](#)

Hey Oblivion, how does that 8600GTS hold up?

Subject: Re: whos comp sys is the best!
Posted by [reborn](#) on Sun, 21 Oct 2007 07:15:33 GMT
[View Forum Message](#) <> [Reply to Message](#)

AMD 64 X2 Dual Core 4600+
2GB RAM
Two NVIDIA GeForce 7950 GX2 in SLI config (yes, thats 2 gig of video RAM and 1ghz of GPU)
300gb SATA HD

Subject: Re: whos comp sys is the best!
Posted by [Herr Surth](#) on Sun, 21 Oct 2007 07:39:22 GMT
[View Forum Message](#) <> [Reply to Message](#)

Dave Anderson wrote on Sat, 20 October 2007 23:03Hey Oblivion, how does that 8600GTS hold up?
8500&8600s are pretty weak tbh.

Subject: Re: whos comp sys is the best!
Posted by [Ghostshaw](#) on Sun, 21 Oct 2007 07:58:41 GMT
[View Forum Message](#) <> [Reply to Message](#)

Nah the 8600's are okay, the GTS one anyway its the 8500's and the 8400's you have to stay away from.

-Ghost-

Subject: Re: whos comp sys is the best!
Posted by [Crimson](#) on Sun, 21 Oct 2007 08:13:41 GMT
[View Forum Message](#) <> [Reply to Message](#)

CPU: AMD Athlon 64 X2 Dual Core 6000+ at 3000 mHz each core
RAM: 2 Gigs
Hard Drives: 300 gig SATA, 120 gig SATA
Video: nVidia GeForce 7900 GT (free from EA) + some random PCI card for my 3rd and 4th monitors
OS: Windows XP

Monitors:

Main - 24" widescreen Dell LCD

Secondary - 19" NEC LCD

Third - 19" Viewsonic LCD

Fourth - 19" Dell LCD TV

We also have a 4.3 Terabyte Apple XRAID for all of our movies, TV shows, extra storage that is shared on the network, which is why my own PC's hard drive space isn't that great.

I also have a MacBook Pro laptop with an Intel Core Duo at 2.16 GHz per core, 2 gigs of RAM, and 100 gig hard drive.

Subject: Re: whos comp sys is the best!

Posted by [IronWarrior](#) on Sun, 21 Oct 2007 08:54:12 GMT

[View Forum Message](#) <> [Reply to Message](#)

Ghostshaw wrote on Sun, 21 October 2007 02:58 Nah the 8600's are okay, the GTS one anyway its the 8500's and the 8400's you have to stay away from.

-Ghost-

Don't see what is so bad about them, the 8400 and 8500s that I've been looking at are pretty good.

Subject: Re: whos comp sys is the best!

Posted by [nopol10](#) on Sun, 21 Oct 2007 08:58:17 GMT

[View Forum Message](#) <> [Reply to Message](#)

Crimson wrote on Sun, 21 October 2007 16:13 CPU: AMD Athlon 64 X2 Dual Core 6000+ at 3000 mHz each core

RAM: 2 Gigs

Hard Drives: 300 gig SATA, 120 gig SATA

Video: nVidia GeForce 7900 GT (free from EA) + some random PCI card for my 3rd and 4th monitors

OS: Windows XP

Monitors:

Main - 24" widescreen Dell LCD

Secondary - 19" NEC LCD

Third - 19" Viewsonic LCD

Fourth - 19" Dell LCD TV

We also have a 4.3 Terabyte Apple XRAID for all of our movies, TV shows, extra storage that is shared on the network, which is why my own PC's hard drive space isn't that great.

I also have a MacBook Pro laptop with an Intel Core Duo at 2.16 GHz per core, 2 gigs of RAM, and 100 gig hard drive.

You just pwnt everyone...

Subject: Re: whos comp sys is the best!

Posted by [nikki6ixx](#) on Sun, 21 Oct 2007 09:27:44 GMT

[View Forum Message](#) <> [Reply to Message](#)

Pentium II, 450 MHz (with MMX, Baby!)

384 MB of RAM

16 GB HD

ATI Radeon 7000, PCI with 64 MB!

15" IBM Flat Panel monitor from 1997.

Booyah.

Subject: Re: whos comp sys is the best!

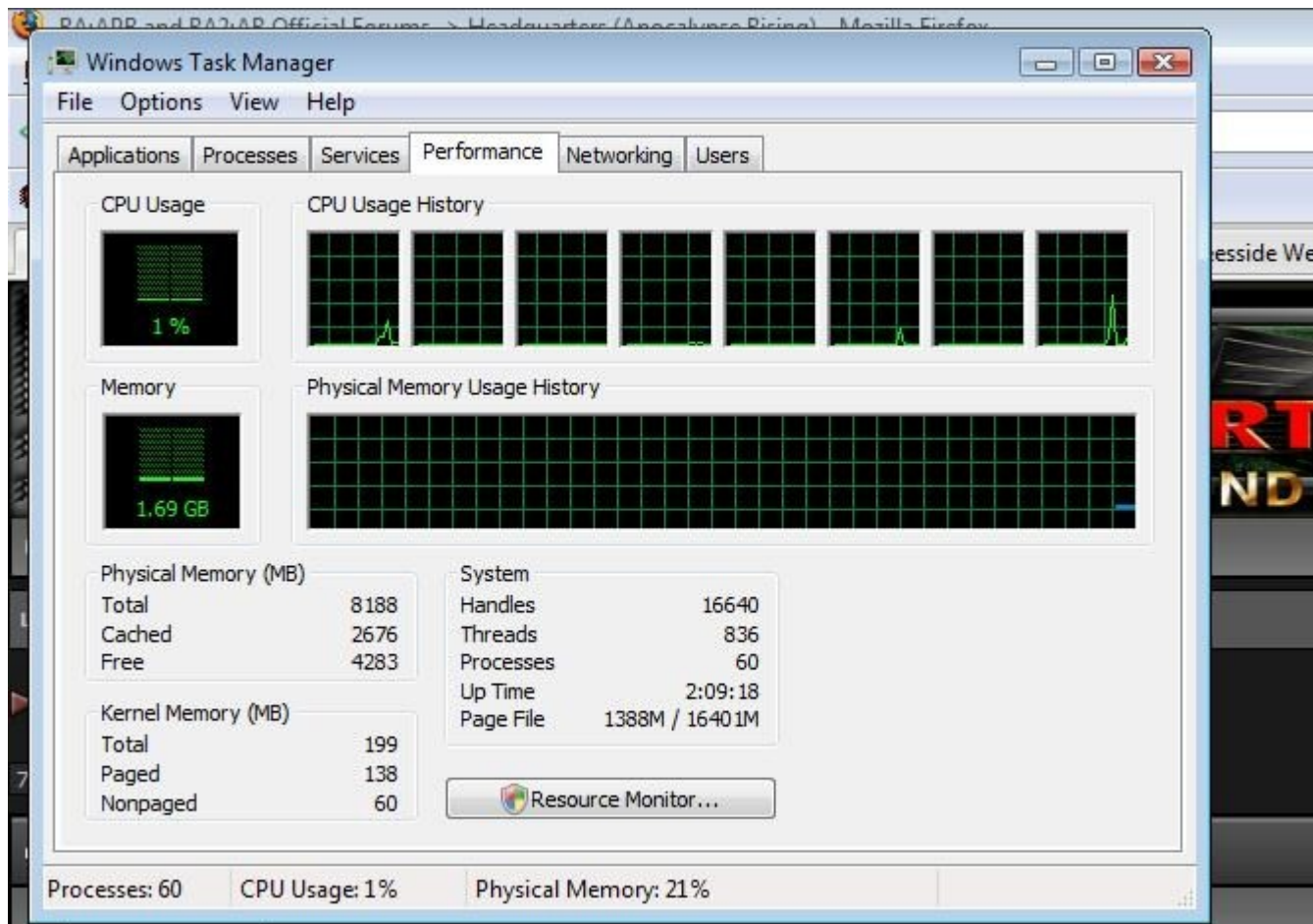
Posted by [danpaul88](#) on Sun, 21 Oct 2007 09:31:41 GMT

[View Forum Message](#) <> [Reply to Message](#)

(Ok, so that's not REALLY mine, its one of the machines at my university)

File Attachments

1) [taskMan.jpg](#), downloaded 1560 times



Subject: Re: whos comp sys is the best!

Posted by [Nightma12](#) on Sun, 21 Oct 2007 09:42:49 GMT

[View Forum Message](#) <> [Reply to Message](#)

www.aohost.co.uk/newbox.jpg <<<<<<

Subject: Re: whos comp sys is the best!

Posted by [nopol10](#) on Sun, 21 Oct 2007 09:45:32 GMT

[View Forum Message](#) <> [Reply to Message](#)

Holy shit. I take back my words.

Subject: Re: whos comp sys is the best!

Posted by [Crimson](#) on Sun, 21 Oct 2007 10:46:03 GMT

[View Forum Message](#) <> [Reply to Message](#)

That's not his home PC. Doesn't count.

Subject: Re: whos comp sys is the best!
Posted by [Goztow](#) on Sun, 21 Oct 2007 10:52:46 GMT
[View Forum Message](#) <> [Reply to Message](#)

Intel core 2 duo T5600 at 1,83 Ghz
Nvidia GeForce Go 7600 256 MB vram
120 GB HDD
2 GB DDR2 RAM

Laptop

Subject: Re: whos comp sys is the best!
Posted by [danpaul88](#) on Sun, 21 Oct 2007 10:54:35 GMT
[View Forum Message](#) <> [Reply to Message](#)

Bah, fine

My home PC is not quite as grand...

AMD Athlon64 X2 3800+
2048mb RAM
320GB SATA and 160GB IDE HDDs
nVidia 7600GT
Windows Vista Business Edition
2x 15" monitors

Subject: Re: whos comp sys is the best!
Posted by [Caveman](#) on Sun, 21 Oct 2007 10:54:36 GMT
[View Forum Message](#) <> [Reply to Message](#)

I'll just quote myself from another thread that just went on about computers.

Quote:

You do know that computer is seriously outdated don't you?

I lucky have two computers, one that im using now which is my main machine. AMD Sempron 3100+ 2.1Ghz, 512mb DDR 333 (Was 1GB until a module blew) 320GB HDD and a XFX 7900GS 600.

And then I have my 'down stairs computer' AMD 4000+ 2.4Ghz, 2GB DDR 400, 250GB HDD and a XFX 7800 XXX Edition.

Im in the process of updating my sempron (God bless my poor sempron) to a AMD 6000+, 2GB DDR 800, 500GB but use the 7900GS card.

Subject: Re: whos comp sys is the best!
Posted by [Sir Kane](#) on Sun, 21 Oct 2007 10:57:47 GMT
[View Forum Message](#) <> [Reply to Message](#)

Intel Q6600 at default clocks
8 GB OCZ RAM
8800 GTS
3x 250 GB Seagate harddrives
Vista and Windows server 2003 dual boot
22" Philips widescreen monitor

Subject: Re: whos comp sys is the best!
Posted by [Caveman](#) on Sun, 21 Oct 2007 10:59:44 GMT
[View Forum Message](#) <> [Reply to Message](#)

Kane, are you running a 64bit OS by any chance?

Subject: Re: whos comp sys is the best!
Posted by [danpaul88](#) on Sun, 21 Oct 2007 11:02:19 GMT
[View Forum Message](#) <> [Reply to Message](#)

The screen shot even says 'System Type: 64-bit operating system' on it, and to actually use 8gb of RAM you have to use 64 bit.

Subject: Re: whos comp sys is the best!
Posted by [Sir Kane](#) on Sun, 21 Oct 2007 11:07:33 GMT
[View Forum Message](#) <> [Reply to Message](#)

Wrong. There's PAE for 32 bit operating systems.

Subject: Re: whos comp sys is the best!
Posted by [Zion](#) on Sun, 21 Oct 2007 11:42:54 GMT
[View Forum Message](#) <> [Reply to Message](#)

System downstairs:

Intel Pentium D 3.0Ghz (OC'd to 3.3Ghz)
1.5gb RAM
280gb (total) HDD
nVidia 7900GS AGP 256mb VRAM

Creative Audigy Soundblaster 4.0

MacBook Pro:

Intel Core 2 Duo 2.16Ghz

1gb RAM

120gb HDD

ATI Radeon X1600 PCI-e 128mb VRAM

Sigmatel Audio

Subject: Re: whos comp sys is the best!

Posted by [Oblivion165](#) on Sun, 21 Oct 2007 13:50:31 GMT

[View Forum Message](#) <> [Reply to Message](#)

Dave Anderson wrote on Sat, 20 October 2007 23:03Hey Oblivion, how does that 8600GTS hold up?

Love it.

DX10, can run any game what-so-ever on max anything without even a stutter.

Games I've ran with full AA and everything:

HL2

HL2: Lost Coast

HL2:Ep1

HL2:Ep2

Portal

Team Fortress 2

Bioshock

Unreal3 Demo

Quake Enemy Territory Demo

TimeShift Demo

Zombie Master

Goldeneye Source

Stalker: Shadow of Chernobyl

In VaLVE games I always run at 1600 x 900 and like I said this card doesn't even know I'm running a game.

Exact card:

<http://www.newegg.com/product/product.asp?item=N82E16814133198>

EDIT: Hell, just look at the reviews on newegg

Subject: Re: whos comp sys is the best!
Posted by [JPNOD](#) on Sun, 21 Oct 2007 14:10:06 GMT
[View Forum Message](#) <> [Reply to Message](#)

danpaul88 wrote on Sun, 21 October 2007 05:31

(Ok, so that's not REALLY mine, its one of the machines at my university)

Dual CPU setup Both Qaudcore Xeon's?

Subject: Re: whos comp sys is the best!
Posted by [CarrierII](#) on Sun, 21 Oct 2007 14:16:37 GMT
[View Forum Message](#) <> [Reply to Message](#)

I'm headed for the worst system award if I enter my older one: tehehe...

CPU - Single Core Skt478 P4 2.0 Ghz
Mem - 1.5 GB of DDR 266Mhz RAM
HDD - 40 GB (Western Digital) ATA 100
Graphics card - Radeon 9550 w/ 512 MB RAM
Some weird sound card that the local PC store had kicking about so I could get sound...
And a PCI network card because the onboard refuses to function, dunno why.

My newer PC -

CPU - Dual Core LGA775 P4D 2.66Ghz
Mem - 1GB of DDR2 PC4800 (Or something, I can't remember)
HDD - Four cheapo maxtor drives in a RAID 0+1 (SATA II) - 152GB of fail-safe storage.
Graphics card - ATI X1650 Pro w/ 512MB RAM
Realtek onboard HD audio
Onboard Gigabit LAN card (had to use Base 100 though, that other PC and my router are old)

Subject: Re: whos comp sys is the best!
Posted by [danpaul88](#) on Sun, 21 Oct 2007 14:24:48 GMT
[View Forum Message](#) <> [Reply to Message](#)

JPNOD wrote on Sun, 21 October 2007 15:10danpaul88 wrote on Sun, 21 October 2007 05:31>image<

(Ok, so that's not REALLY mine, its one of the machines at my university)

Dual CPU setup Both Qaudcore Xeon's?

Indeed it is.

Subject: Re: whos comp sys is the best!

Posted by [Dave Anderson](#) on Sun, 21 Oct 2007 15:08:21 GMT

[View Forum Message](#) <> [Reply to Message](#)

Quote:Love it.

DX10, can run any game what-so-ever on max anything without even a stutter.

That's awesome then. Had to ask because I am getting this:

<http://www.newegg.com/product/product.asp?item=N82E16814150250>

Subject: Re: whos comp sys is the best!

Posted by [luv2pb](#) on Sun, 21 Oct 2007 16:32:27 GMT

[View Forum Message](#) <> [Reply to Message](#)

(CPU 1) Intel® Core™2 Quad CPU @ 2.40GHz (4096KB L2 Cache, Socket 775) @ 3000MHz (333MHz FSB), 5% load

(CPU 2) Intel® Core™2 Quad CPU @ 2.40GHz (4096KB L2 Cache, Socket 775) @ 3000MHz (333MHz FSB), 0% load

(CPU 3) Intel® Core™2 Quad CPU @ 2.40GHz (4096KB L2 Cache, Socket 775) @ 3000MHz (333MHz FSB), 0% load

(CPU 4) Intel® Core™2 Quad CPU @ 2.40GHz (4096KB L2 Cache, Socket 775) @ 3000MHz (333MHz FSB), 2% load

Intel® Core™2 Quad CPU @ 2.40GHz @ 3000MHz (ASUSTeK Computer INC. P5N-E SLI mainboard)

(RAM) 4GB, 2.87GB free

(HDDs) 69.2GB, 18.0GB free

NVIDIA GeForce 8800 GTS (640MB), 1280x1024x32, 75Hz

(OS) Microsoft Windows XP Home Edition (SP2), 5d 8h 14m 52s uptime, 3w 2d 17h 42m 49s uptime record

(I know, XP Home fails, but I was in a pinch and I wanted a lagit version for this PC. I think once the first SP comes out for Vista in a few months I'm going to finally get off my ass and upgrade)

Subject: Re: whos comp sys is the best!

Posted by [sadukar09](#) on Sun, 21 Oct 2007 17:24:41 GMT

[View Forum Message](#) <> [Reply to Message](#)

You need more HD space :/

Subject: Re: whos comp sys is the best!
Posted by [luv2pb](#) on Sun, 21 Oct 2007 17:29:26 GMT
[View Forum Message](#) <> [Reply to Message](#)

Oh I have planty more ... just not on this PC.

Subject: Re: whos comp sys is the best!
Posted by [danpaul88](#) on Sun, 21 Oct 2007 18:34:02 GMT
[View Forum Message](#) <> [Reply to Message](#)

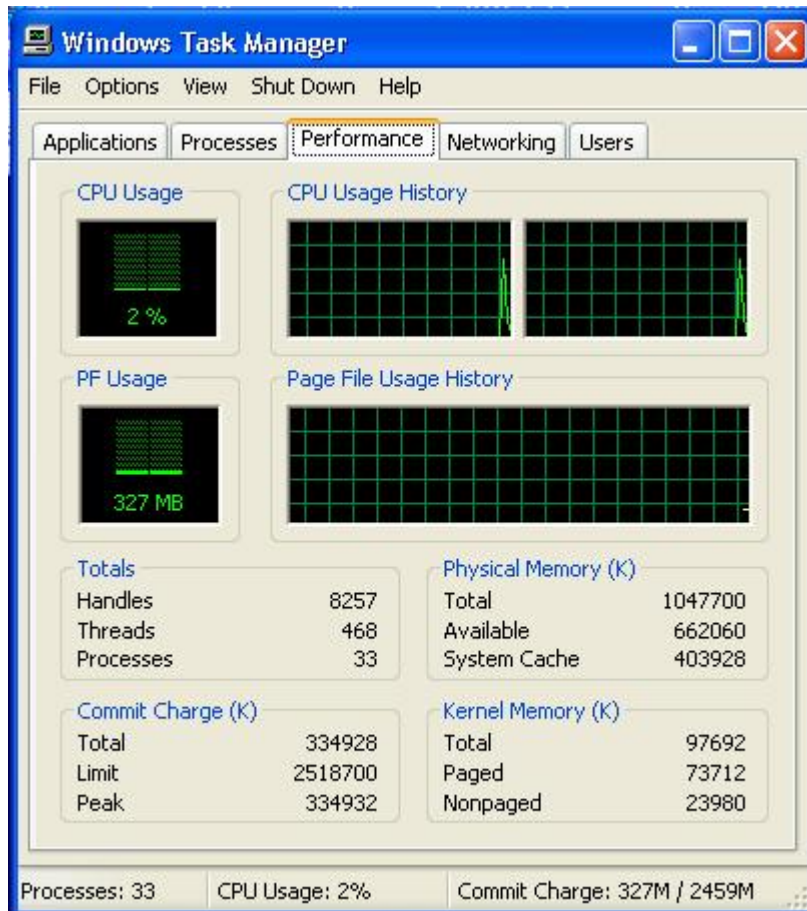
I thought XP Home couldn't handle multiple processor cores properly, and you needed XP Pro for that? Or did they change that in SP2?

Subject: Re: whos comp sys is the best!
Posted by [Carrierll](#) on Sun, 21 Oct 2007 18:41:09 GMT
[View Forum Message](#) <> [Reply to Message](#)

Handles my P4D OK.

File Attachments

1) [XPSP2W2CPU.JPG](#), downloaded 1286 times



Subject: Re: whos comp sys is the best!

Posted by [Sir Kane](#) on Sun, 21 Oct 2007 20:19:55 GMT

[View Forum Message](#) <> [Reply to Message](#)

Looks like I win.

Coding for money for the win.

Subject: Re: whos comp sys is the best!

Posted by [Blazer](#) on Sun, 21 Oct 2007 21:24:08 GMT

[View Forum Message](#) <> [Reply to Message](#)

File Attachments

1) [pc.jpg](#), downloaded 1254 times

View basic information about your computer

Windows edition

Windows Vista™ Ultimate

Copyright © 2006 Microsoft Corporation. All rights reserved.



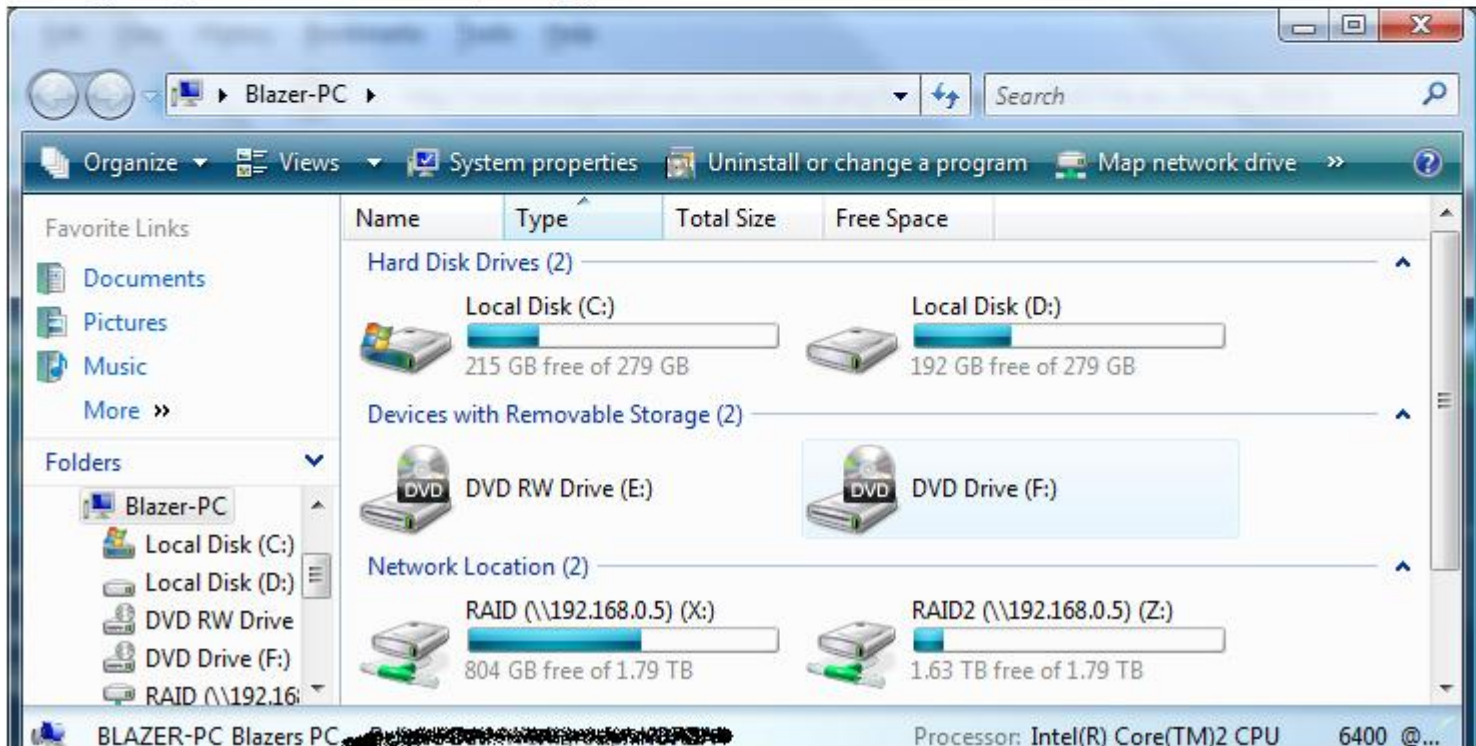
System

Rating: **5.4** Windows Experience Index : Unrated

Processor: Intel(R) Core(TM)2 CPU 6400 @ 2.13GHz 2.77 GHz

Memory (RAM): 2687 MB

System type: 32-bit Operating System



Subject: Re: whos comp sys is the best!

Posted by [Goztow](#) on Mon, 22 Oct 2007 06:51:34 GMT

[View Forum Message](#) <> [Reply to Message](#)

SK, one could consider that if you work at home, that is your office PC and hence is disqualified .

I should get vinny1511 in here, think he recently upgraded to a quad core, all overclocked to 3 GHZ. The uselessness...

Subject: Re: whos comp sys is the best!
Posted by [Sir Kane](#) on Mon, 22 Oct 2007 07:05:23 GMT
[View Forum Message](#) <> [Reply to Message](#)

I don't work from home.

Subject: Re: whos comp sys is the best!
Posted by [reborn](#) on Mon, 22 Oct 2007 07:15:19 GMT
[View Forum Message](#) <> [Reply to Message](#)

Sir Kane wrote on Mon, 22 October 2007 03:05I don't work from home.

Yeah that system really does out spec anything anyone else posted.
What's the video cards like?

Subject: Re: whos comp sys is the best!
Posted by [Sir Kane](#) on Mon, 22 Oct 2007 10:43:45 GMT
[View Forum Message](#) <> [Reply to Message](#)

Hot. Allthough Renegade still performs shit on that system.

Subject: Re: whos comp sys is the best!
Posted by [nopol10](#) on Mon, 22 Oct 2007 10:46:02 GMT
[View Forum Message](#) <> [Reply to Message](#)

reborn wrote on Mon, 22 October 2007 15:15Sir Kane wrote on Mon, 22 October 2007 03:05I don't work from home.

Yeah that system really does out spec anything anyone else posted.
What's the video cards like?

The card must be good, or it won't score that high (Vista takes the lowest score of all the items as the Experience index).

Subject: Re: whos comp sys is the best!
Posted by [Sir Kane](#) on Mon, 22 Oct 2007 10:48:08 GMT
[View Forum Message](#) <> [Reply to Message](#)

Memory is 5.5, everything else is 5.9 lol

Subject: Re: whos comp sys is the best!

Posted by [EvilWhiteDragon](#) on Mon, 22 Oct 2007 11:41:28 GMT

[View Forum Message](#) <> [Reply to Message](#)

Even though it's not the greatest system, it's still pretty nice:

Main System:

Core2Duo E4300 @ 3ghz

2048 MB PC8000 RAM

Asus P5D Deluxe

Geforce 7800 GTX

2* 500 GB Hitachi harddisks

1* 250 GB Hitachi harddisk

Audigy 2 ZS

580 Watt Targan PSU

Antec P182 case

Sound:

Marantz PM25 amp

2* Quad L11 speakers

2nd computer (unstable atm):

AMD Athlon 64 3000+

DFI NF4-SLI expert

1GB PC-5500 RAM

Geforce 6600

40 GB harddrive

Antec Sonata 3 case

Sound:

Technics amp

2* Wharfedale E50 speakers

2nd computer with stable parts:

Replaced MB, CPU, and GFX with this:

AMD Athlon XP 2400m @ 2,4 Ghz

Asus A7N266-C

Geforce FX5200 (teh suckage)

Comp owned by my but used by my dad:

AMD Athlon 3000+

MSI mATX motherboard with Ati chipset

1 GB PC 3200 memory

60 GB Maxtor

Build in graphics card

Antec Sonata case

BlackIntel/TheKOSs2 server:
CPU: Intel Core2 Duo E4300
Motherboard: Gigabyte GA-965GM-S2
Memory: 2GB's of DDR2 ram
O/S: Windows XP Pro x64
SCSI controller: Adaptec SCSI card 29160N
SCSI Harddisks: 2x IBM 18.4 GB 10k RPM (in software RAID 0)
IDE Harddisk: 120 GB Seagate (Windows disk + backup for RAID)
chassis: Chieftec 2U 19" chassis

Subject: Re: whos comp sys is the best!
Posted by [trooprm02](#) on Mon, 22 Oct 2007 16:01:00 GMT
[View Forum Message](#) <> [Reply to Message](#)

Intel 486
8x8mb ram
internet explorer (w/turbo mode)

Subject: Re: whos comp sys is the best!
Posted by [Sir Kane](#) on Mon, 22 Oct 2007 18:50:36 GMT
[View Forum Message](#) <> [Reply to Message](#)

k

Subject: Re: whos comp sys is the best!
Posted by [Xylaquin](#) on Mon, 22 Oct 2007 20:56:02 GMT
[View Forum Message](#) <> [Reply to Message](#)

Sir Kane wrote on Mon, 22 October 2007 11:43Hot. Although Renegade still performs shit on that system.

Yeah, why does renegade perform so crap on good builds?

Subject: Re: whos comp sys is the best!
Posted by [Carrierll](#) on Mon, 22 Oct 2007 21:11:05 GMT
[View Forum Message](#) <> [Reply to Message](#)

It's badly written.

Subject: Re: whos comp sys is the best!

Posted by [EA-DamageEverything](#) on Mon, 22 Oct 2007 23:53:38 GMT

[View Forum Message](#) <> [Reply to Message](#)

I own "Germanys next power-saving Topmodel" !

FACTS=

AMD Athlon X2 5600+ (2x2800Mhz)

2x1GB G.Skillz DDR2-800 Ram (4-4-3-5)

Seagate ST3250410AS HDD (250GB)

MSI Radeon 2600XT (passively cooled)

Coolermaster Wavemaster Miditytower (Yellow and good-looking)

LG Flatron L1900R 19" Monitor (good-looking too)

Razer KRAIT Gaming Mouse

sounds best on X-Fi, Noise comes from a Logitech 5.1

This is my "daily-driver" where I'm running 2 WindowsXP Installs (1 for all things except Gaming and strictly Games on the 2nd XP). For a short Summary, look at the Attachment below. For Details + tons of pics, check this Link

<http://www.nethands.de/pys/show.php?id=51682&skin=1&lang=en>

File Attachments

1) [cnc.jpg](#), downloaded 1080 times



System:

Microsoft Windows XP
Professional
Version 2002
Service Pack 2

Registriert für:

1337 Ru0r
H4XX0R Inc.
55274-649-4705831-23050

Hergestellt und unterstützt von:



Captain Havoc
GDI Special Forces
AMD Athlon(tm) 64 X2 Dual
Core Processor 5600+
2.81 GHz, 2,00 GB RAM
Physikalische Adresserweiterung

[Supportinformationen](#)

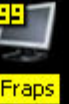
OK

Abbrechen

Übernehmen

COMMAND & CONQUER

T I B E R I U M W A R S
KANE EDITION



Subject: Re: whos comp sys is the best!
Posted by [Falco](#) on Tue, 23 Oct 2007 20:07:53 GMT
[View Forum Message](#) <> [Reply to Message](#)

Not sure if this is the best computer, but it's extremley geek like, and i'm never really on it (Waste of money to me, but i didn't pay for it, so it's all good) (NOTE: I built this computer, it's cheaper than going through DELL, HP, Compaq, etc..)

here you go babies;

Mobo: LGA 775 NVIDIA nForce 680i LT SLI ATX Intel (BFG Technology)
CPU: Intel Core 2 Duo E6600 Conroe 2.4GHz
Memory: mushkin 240-Pin DDR2 800 SDRAM (2 x 2GB)
HardDrive: WD 160GB 7200RPM Cache 8MB
Video Card(s): 8800GTX Ultra SLi (BFG Technology)

MISC (Absolutely not necessary-with links);
Sound Card: bluegears b-Enspirer 24-Bit 7.1 Channels ([Link](#))
Case: NZXT Zero Black/Silver Aluminum ATX Full Tower ([Link](#))
PSU (Need a lot becuae of SLi): NXZT 1000W ATX12V ([Link](#))
Fans & Heatsinks: Memory Fan - EVERCOOL MNC-E Fans ([Link](#))
CPU - Zalman 92mm ([Link](#))
Monitor: LG 24" LCD Widescreen 8ms ([Link](#))
Speakers: Logitech Z-5500 505 Watts 5.1 Surround Sound ([Link](#))

Subject: Re: whos comp sys is the best!
Posted by [Muad Dib15](#) on Wed, 24 Oct 2007 10:01:32 GMT
[View Forum Message](#) <> [Reply to Message](#)

We need Renardin and Dante to post here.

Subject: Re: whos comp sys is the best!
Posted by [cpjok](#) on Thu, 25 Oct 2007 04:25:24 GMT
[View Forum Message](#) <> [Reply to Message](#)

Mine Is Slow And Crashes Alot Dont Know Why

Processor: AMD Sempron(tm) 3000+, MMX, 3DNow, ~2.0GHz

Memory: 512MB RAM

Graphic Card: 256 Nvidia Geforce 5200 Well For Now Its A Crap One Other Stopped Working
Now Its A 32MB Untill I Get Another Or Get That One Fixed

Why We Talking About PC size Anyway

Subject: Re: whos comp sys is the best!
Posted by [JPNOD](#) on Thu, 25 Oct 2007 13:13:36 GMT
[View Forum Message](#) <> [Reply to Message](#)

p4 2.6ghz@3.2
asus p4p mobo
512ram
40gb ide hdd

have been playing renegade on that for 4 years, still runs like a charm.

Subject: Re: whos comp sys is the best!
Posted by [Falco](#) on Thu, 25 Oct 2007 20:41:51 GMT
[View Forum Message](#) <> [Reply to Message](#)

JPNOD wrote on Thu, 25 October 2007 09:13p4 2.6ghz@3.2
asus p4p mobo
512ram
40gb ide hdd

have been playing renegade on that for 4 years, still runs like a charm.

awsome computer

Subject: Re: whos comp sys is the best!
Posted by [Romaner](#) on Thu, 15 Nov 2007 17:19:21 GMT
[View Forum Message](#) <> [Reply to Message](#)

sorry to revive an old topic but i just built my new computer and got it to work all stable and cool.

so its amd 5200x2 1+1mb cache.
asus m2n32 sli deluxe mobo.
2x1gb pc6400 ram (800mhz).
2x8500gt 256mb vid cards in sli mode (putting the other one in this friday).
sonata 3 case with 2x120mm fans.
and seagate sata hd 250gb.

Subject: Re: whos comp sys is the best!
Posted by [Carrierll](#) on Thu, 15 Nov 2007 17:38:36 GMT
[View Forum Message](#) <> [Reply to Message](#)

Romaner wrote on Thu, 15 November 2007 17:19sorry to revive an old topic but i just built my new computer and got it to work all stable and cool.

so its amd 5200x2 1+1mb cache.
asus m2n32 sli deluxe mobo.
2x1gb pc6400 ram (800mhz).
2x8500gt 256mb vid cards in sli mode (putting the other one in this friday).
sonata 3 case with 2x120mm fans.
and seagate sata hd 250gb.

Heh, I just build my new one too!

This is to replace the one with the Skt478 single core P4 I entered earlier, it's a little more advanced...

Asus P5K mobo
Intel Quad Core 2.4 ghz
2 GB RAM
160 GB HDD
Sonata cases are nice, aren't they?
64 Bit Vista (Was annoying sometimes, but this picture redeemed it...)
Toggle Spoiler

File Attachments

1) [Cute-Cat.jpg](#), downloaded 1244 times



Subject: Re: whos comp sys is the best!
Posted by [Romaner](#) on Thu, 15 Nov 2007 19:39:56 GMT
[View Forum Message](#) <> [Reply to Message](#)

those sonata cases are nice and amazingly easy to install stuff into (for a mid size tower) only bad thing is it shows all the fingerprints very well . but its also amazingly quiet even with both my 120mm fans running at highest speed.

oh and carrier whats your gfx card?

Subject: Re: whos comp sys is the best!
Posted by [sadukar09](#) on Fri, 16 Nov 2007 00:24:53 GMT
[View Forum Message](#) <> [Reply to Message](#)

CarrierII wrote on Thu, 15 November 2007 18:38Romaner wrote on Thu, 15 November 2007

17:19sorry to revive an old topic but i just built my new computer and got it to work all stable and cool.

so its amd 5200x2 1+1mb cache.
asus m2n32 sli deluxe mobo.
2x1gb pc6400 ram (800mhz).
2x8500gt 256mb vid cards in sli mode (putting the other one in this friday).
sonata 3 case with 2x120mm fans.
and seagate sata hd 250gb.

Heh, I just build my new one too!

This is to replace the one with the Skt478 single core P4 I entered earlier, it's a little more advanced...

Asus P5K mobo
Intel Quad Core 2.4 ghz
2 GB RAM
160 GB HDD
Sonata cases are nice, aren't they?
64 Bit Vista (Was annoying sometimes, but this picture redeemed it...)
Toggle Spoiler

Heh, the HDD is a little small no?

Subject: Re: whos comp sys is the best!
Posted by [CarrierII](#) on Fri, 16 Nov 2007 09:56:38 GMT
[View Forum Message](#) <> [Reply to Message](#)

HDD is fine, I don't own enough to clutter that (My music's on a network drive)

Sorry, GFX is a Radeon HD 2600 w/ 256 MB RAM. (I'm going to get another one and crossfire)

Subject: Re: whos comp sys is the best!
Posted by [Ryu](#) on Fri, 16 Nov 2007 10:12:39 GMT
[View Forum Message](#) <> [Reply to Message](#)

CarrierII wrote on Fri, 16 November 2007 03:56HDD is fine, I don't own enough to clutter that (My music's on a network drive)

Sorry, GFX is a Radeon HD 2600 w/ 256 MB RAM. (I'm going to get another one and crossfire)

Crossfire, FTW!

Subject: Re: whos comp sys is the best!

Posted by [Blazer](#) on Fri, 16 Nov 2007 12:12:39 GMT

[View Forum Message](#) <> [Reply to Message](#)

Nobody has the best computer. No matter how leet your system is, there is someone else with more money than you that has something better. So give up trying to have the best rig and just settle for whatever lets you play all your games with no lag...what else could you need

Subject: Re: whos comp sys is the best!

Posted by [Romaner](#) on Fri, 16 Nov 2007 14:30:00 GMT

[View Forum Message](#) <> [Reply to Message](#)

well i didnt see it as competition

i just seen it as a "post your system topic".

and blazer, its true like that about anything. not just computers. i mean cars houses all of it is the same story. you can only get the best your money can buy and someone else with more money will always win.

Subject: Re: whos comp sys is the best!

Posted by [Caveman](#) on Fri, 16 Nov 2007 15:29:06 GMT

[View Forum Message](#) <> [Reply to Message](#)

cpjok wrote on Thu, 25 October 2007 05:25Mine Is Slow And Crashes Alot Dont Know Why

Processor: AMD Sempron(tm) 3000+, MMX, 3DNow, ~2.0GHz

Memory: 512MB RAM

Graphic Card: 256 Nvidia Geforce 5200 Well For Now Its A Crap One Other Stopped Working Now Its A 32MB Untill I Get Another Or Get That One Fixed

Why We Talking About PC size Anyway

The reason your rig crashes is because the AMD Sempron 3000+ isn't rated @ 2Ghz. I just upgraded from a Sempron 3100+ which was rated at 1.8. You're probably experiencing heating problems.

Subject: Re: whos comp sys is the best!
Posted by [Dave Mason](#) on Fri, 16 Nov 2007 15:34:26 GMT
[View Forum Message](#) <> [Reply to Message](#)

My Penis is about this big.

```
|=====|
=====|
|=====|
=====|
```

Subject: Re: whos comp sys is the best!
Posted by [Romaner](#) on Fri, 16 Nov 2007 16:03:31 GMT
[View Forum Message](#) <> [Reply to Message](#)

Dave Mason wrote on Fri, 16 November 2007 08:34My Penis is about this big.

```
|=====|
=====|
|=====|
=====|
```

umm wrong thread, you are looking for rocko`s penis survey... just a few down

Subject: Re: whos comp sys is the best!
Posted by [CarrierII](#) on Fri, 16 Nov 2007 16:16:53 GMT
[View Forum Message](#) <> [Reply to Message](#)

Oh yes...

Subject: Re: whos comp sys is the best!
Posted by [Blazer](#) on Fri, 16 Nov 2007 23:01:22 GMT
[View Forum Message](#) <> [Reply to Message](#)

Dave Mason wrote on Fri, 16 November 2007 08:34My Penis is about this big.

|=====|
=====|
|=====|
=====|

The scary thing is, I have a feeling he actually held his dick up to the screen to mark it

Subject: Re: whos comp sys is the best!
Posted by [Zion](#) on Fri, 16 Nov 2007 23:13:53 GMT
[View Forum Message](#) <> [Reply to Message](#)

Blazer wrote on Fri, 16 November 2007 23:01Dave Mason wrote on Fri, 16 November 2007 08:34My Penis is about this big.

|=====|
=====|
|=====|
=====|

The scary thing is, I have a feeling he actually held his dick up to the screen to mark it

Well, if you're playing like that...

|=====|
=====|

|=====|
=====|

|=====|
=====|

|=====|
=====|

|=====|
=====|

|=====|
=====|

|=====|

=====|

Length and Width.

Eat that Dave Mason!

Subject: Re: whos comp sys is the best!
Posted by [JeepRubi](#) on Sat, 17 Nov 2007 04:10:03 GMT
[View Forum Message](#) <> [Reply to Message](#)

Guys, if you turn your resolution down the measurements get bigger!
