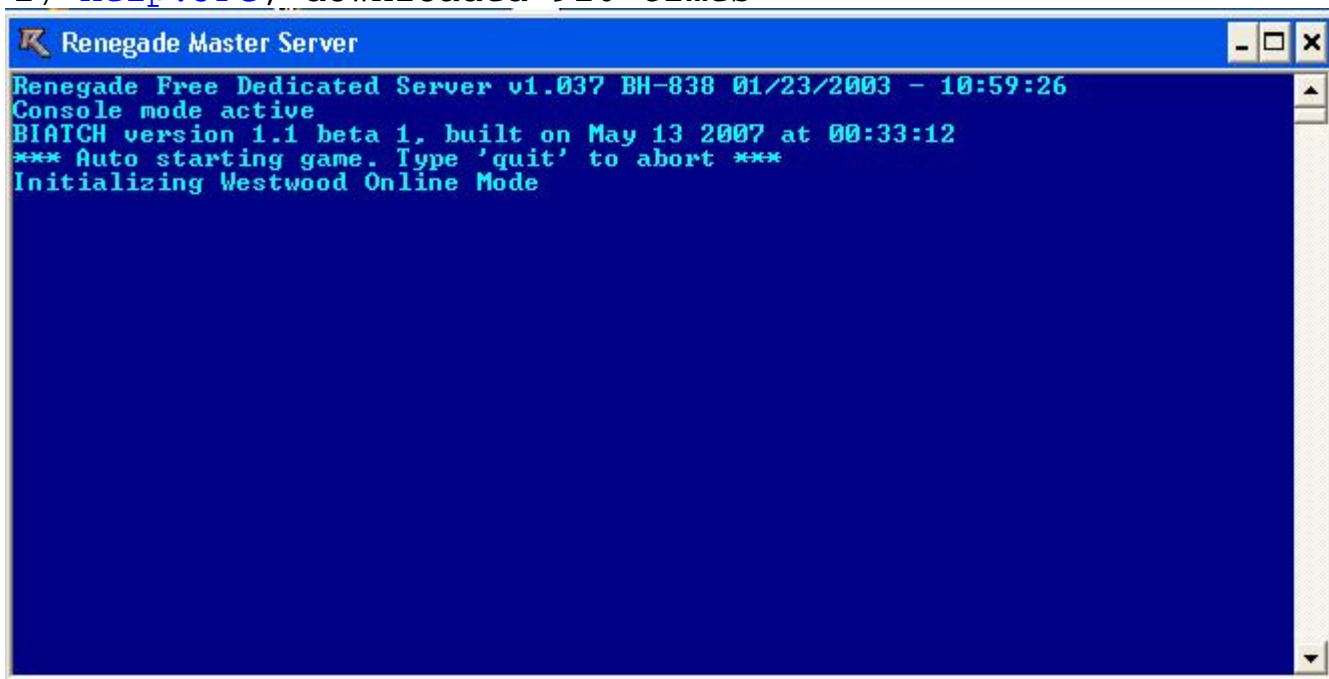

Subject: FDS Crash at startup
Posted by [SoQTrash](#) on Sun, 12 Aug 2007 10:31:06 GMT
[View Forum Message](#) <> [Reply to Message](#)

I got a problem.
After i reinstalled a server today i rebooted the server.
Afterwards, the fds-programs dont wanna start:
None of the 3..
I only made changes on 1 server.
now the other 2 dont want to start anymore, too.

After this screen the fds-windows disappear/close themselves.
Anyone idea?

File Attachments

1) [help.JPG](#), downloaded 916 times



Subject: Re: FDS Crash at startup
Posted by [Sn1per74*](#) on Sun, 12 Aug 2007 12:55:25 GMT
[View Forum Message](#) <> [Reply to Message](#)

Nothing comes after that? Not even for a split second?

Subject: Re: FDS Crash at startup
Posted by [Yrr](#) on Sun, 12 Aug 2007 13:05:19 GMT

[View Forum Message](#) <> [Reply to Message](#)

Install Resurrection or Custom Scripts and give us the crash dump created after the server crashed.

Subject: Re: FDS Crash at startup
Posted by [SoQTrash](#) on Sun, 12 Aug 2007 18:25:49 GMT
[View Forum Message](#) <> [Reply to Message](#)

After trying to get help of some ppl, which was unsuccessful, I deleted all FDS and I am reinstalling them atm.
Thread can be closed.

This was urgent.
Thats why I didn't wait for replies that long...

Subject: Re: FDS Crash at startup
Posted by [AlienWorkShop](#) on Mon, 13 Aug 2007 15:35:37 GMT
[View Forum Message](#) <> [Reply to Message](#)

Just for future notice...

This is because the Westwood Online Components was not installed when you installed your renegade FDS...

Please make sure that you install your server in WOL mode (in the setup), if you install it in GameSpy mode and change the game type to WOL in server.ini the server will crash like this.

If you need a serial number for installing the FDS in WOL mode, use any sequence of numbers as long as it starts with 0669...

Could be 06991111111111111111 for all it cares, just remember to replace the serial number, WOL Login username and password in server.ini once installed...

Subject: Re: FDS Crash at startup
Posted by [Hex](#) on Mon, 13 Aug 2007 17:13:08 GMT
[View Forum Message](#) <> [Reply to Message](#)

Umm SoQTrash, I told you in IRC to reinstall the WOL omponents to fix this
