
Subject: First Turret Model

Posted by [c0vert7](#) on Sat, 04 Aug 2007 19:44:25 GMT

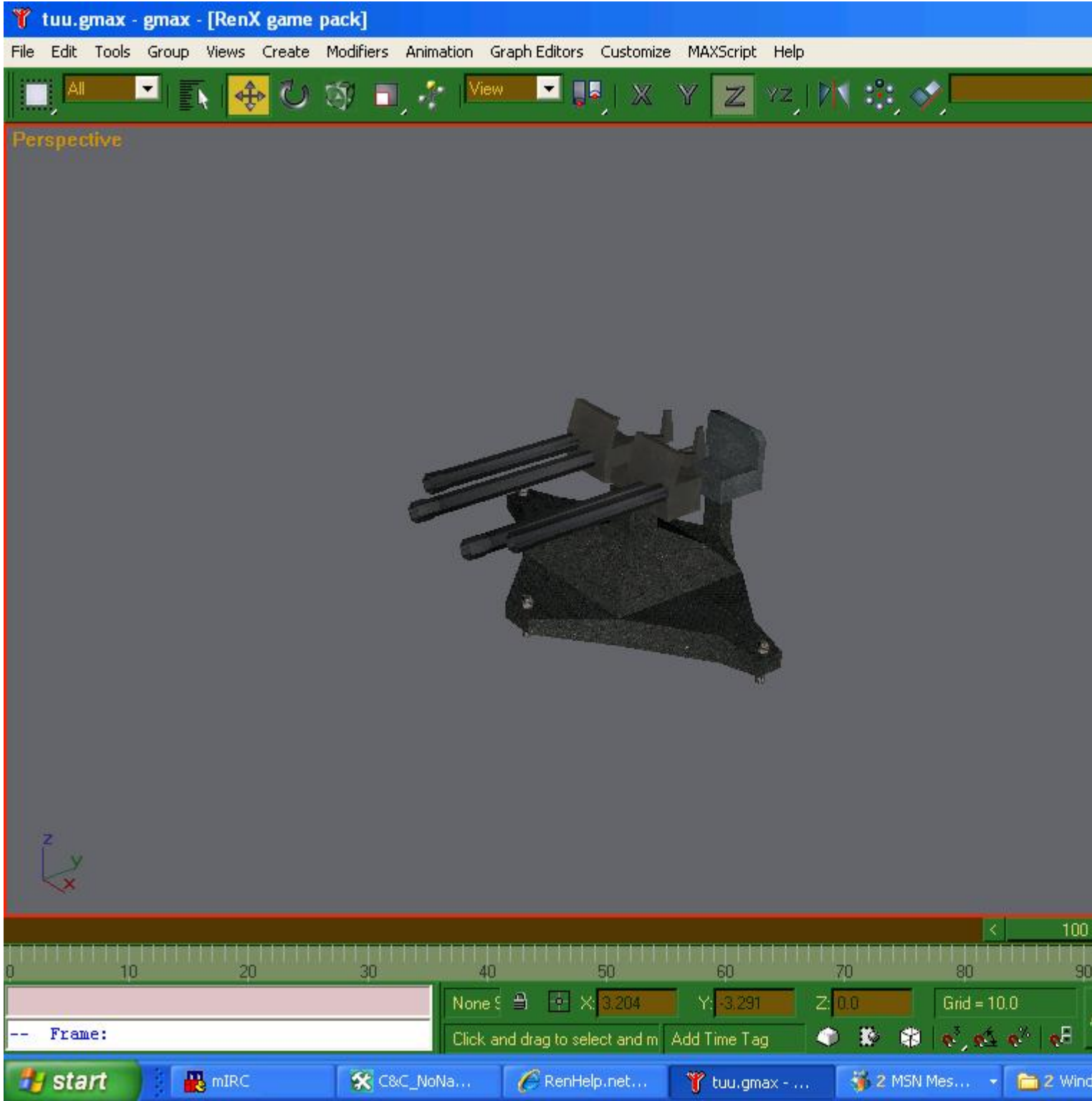
[View Forum Message](#) <> [Reply to Message](#)

I wanted to see if I could do any good at making models, Also figured it was a good time to learn how to bone, characters, vehicles, weapons, and turrets. I got alot of reading to do .

Heres where im at so far. Its about the perfect size. For what I am useing it for that is.

File Attachments

1) [untitled.JPG](#), downloaded 796 times



Subject: Re: First Turret Model
Posted by [c0vert7](#) on Sat, 04 Aug 2007 19:47:45 GMT
[View Forum Message](#) <> [Reply to Message](#)

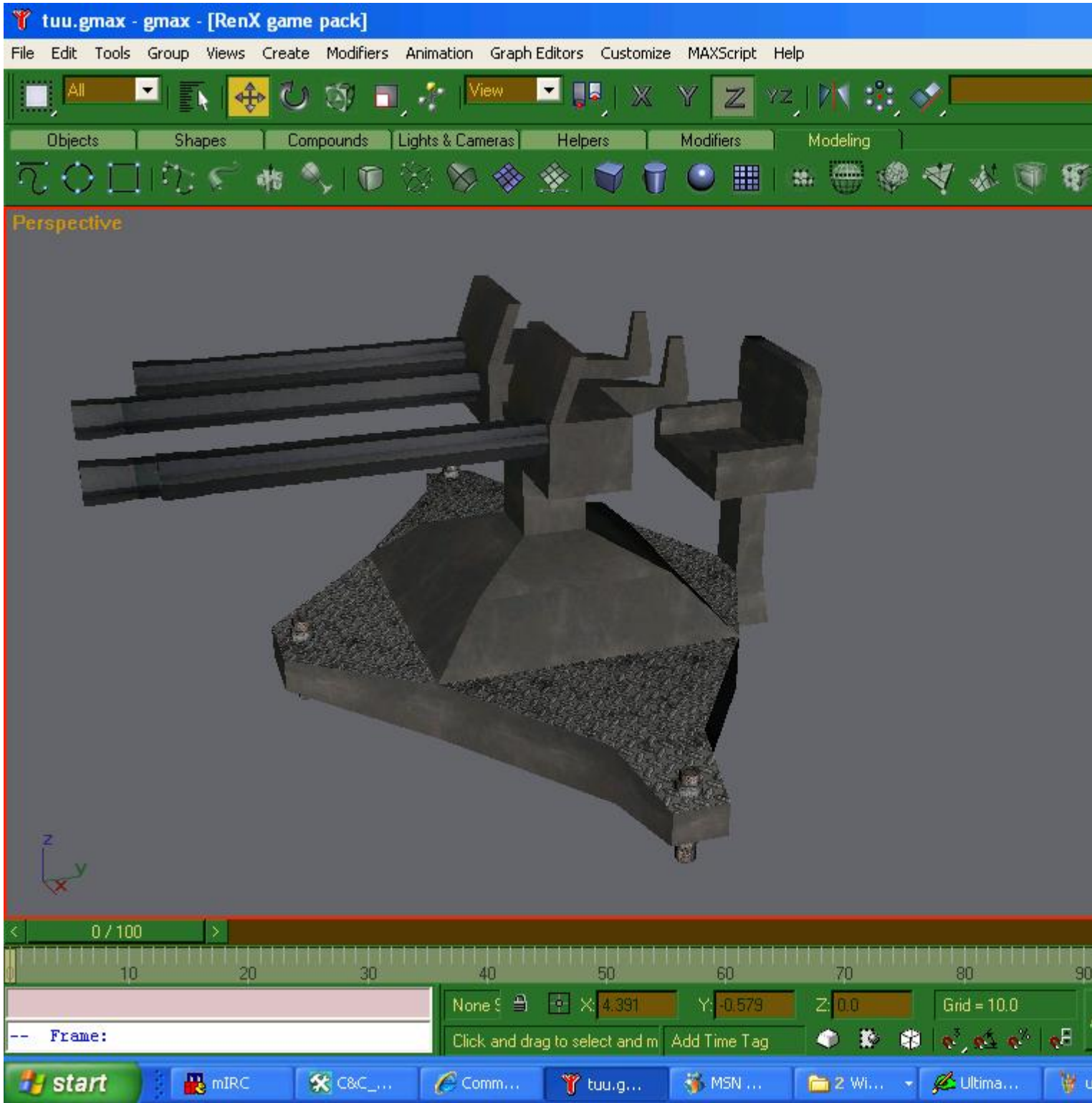
Also on the look out for some good textures for this if anyone can find any images of for the base, turret, seat. I got the barrel already. Thats is a nice texture but the rest are.. uk.

Subject: Re: First Turret Model
Posted by [c0vert7](#) on Sat, 04 Aug 2007 20:07:06 GMT
[View Forum Message](#) <> [Reply to Message](#)

IDk if this is any better but I think it looks better.

File Attachments

1) [untitled.JPG](#), downloaded 666 times



Subject: Re: First Turret Model
Posted by [Sn1per74*](#) on Sat, 04 Aug 2007 20:17:48 GMT
[View Forum Message](#) <> [Reply to Message](#)

Wow, I like it. Nice work c0vert.

Subject: Re: First Turret Model
Posted by [R315r4z0r](#) on Sat, 04 Aug 2007 20:22:37 GMT
[View Forum Message](#) <> [Reply to Message](#)

looks good

Subject: Re: First Turret Model
Posted by [c0vert7](#) on Sat, 04 Aug 2007 20:38:04 GMT
[View Forum Message](#) <> [Reply to Message](#)

Ok I am at the point of making the world box and adding collisions, but it tells me to select all the V_ objects (which at first they told me to name the turret, base, and barrel) which that is the complete object, they said only to use the collision projectile.... So than I was gonna do the world box and it said only select collisions physical, camera. So my question is, are tanks going drive through it?

Subject: Re: First Turret Model
Posted by [R315r4z0r](#) on Sat, 04 Aug 2007 20:42:37 GMT
[View Forum Message](#) <> [Reply to Message](#)

No, you don't put collisions on the model itself, you put it on the world box.

Tanks wont drive through it. The only collisions that will apply to your turret are an invisible barrier around the turret.

You collide against the worldbox, not the model itself.

Subject: Re: First Turret Model
Posted by [c0vert7](#) on Sat, 04 Aug 2007 20:52:03 GMT
[View Forum Message](#) <> [Reply to Message](#)

Well it said only physical on the tut. So dont you need to add vehicles do the world box settingS?

Subject: Re: First Turret Model
Posted by [Canadacdn](#) on Sat, 04 Aug 2007 21:02:05 GMT
[View Forum Message](#) <> [Reply to Message](#)

The model is good, but it looks like it's made out of cement.

Subject: Re: First Turret Model
Posted by [Cpo64](#) on Sun, 05 Aug 2007 05:48:20 GMT
[View Forum Message](#) <> [Reply to Message](#)

physical includes vehicle collisions, so its not nessicary to select vehicle if you have selected physical. "Vehicle" is used for creating vehicle only blockers.

Subject: Re: First Turret Model
Posted by [Muad Dib15](#) on Mon, 06 Aug 2007 13:08:15 GMT
[View Forum Message](#) <> [Reply to Message](#)

If that is your first model,....HOW THE HECK DOES IT LOOK SO GOOD!!

what did you do? please tell me.

Subject: Re: First Turret Model
Posted by [crazfulla](#) on Mon, 06 Aug 2007 15:02:58 GMT
[View Forum Message](#) <> [Reply to Message](#)

c0vert7;

[Click Here](#)

Come work for us, we have pie!

Subject: Re: First Turret Model
Posted by [Gen_Blacky](#) on Mon, 06 Aug 2007 16:36:40 GMT
[View Forum Message](#) <> [Reply to Message](#)

mmm pie

Subject: Re: First Turret Model
Posted by [c0vert7](#) on Tue, 07 Aug 2007 02:52:04 GMT
[View Forum Message](#) <> [Reply to Message](#)

Thanks . Will probally doing a flaying map with a flak cannon later and also working on trying to add a extra homeing rocket on a hummer but can only be controlled by a second rider, driver can shoot main gun and the vehicle. If I can get that to work it will be standard in all tanks . But price of them will be extra monies.
