
Subject: Error on start up

Posted by [Jerad2142](#) on Tue, 10 Apr 2007 21:25:26 GMT

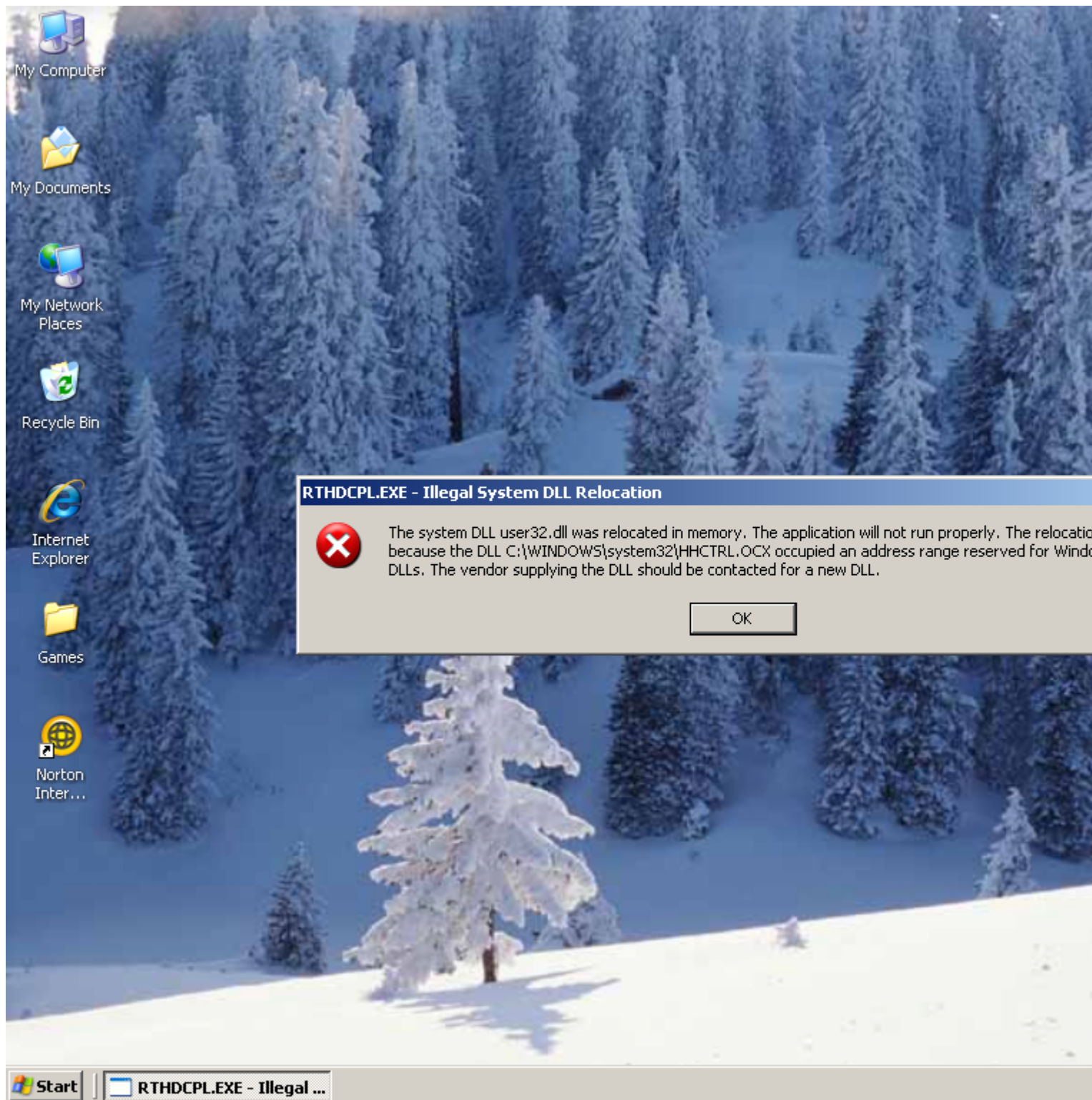
[View Forum Message](#) <> [Reply to Message](#)

Okay here is the deal every time I start up my computer I get this error message:

Its been happening ever sense I updated my system with Microsoft up date (there was an error and one of the files did not update/patch correctly) so I was thinking that I maybe should just google it and download the file and replace it with the one I currently have. But I decided I would ask you guys first just in case one of you knew that doing this could severe screw up my system or something like that, or that I just have to change a setting.

File Attachments

1) [error.png](#), downloaded 408 times



Subject: Re: Error on start up
Posted by [z310](#) on Tue, 10 Apr 2007 21:56:02 GMT
[View Forum Message](#) <> [Reply to Message](#)

How funny--recently my mom's computer got that error. I couldn't do anything on the system because explorer.exe kept freezing or something like that. I just backed-up crucial data by going into safe mode and reformatted.

Subject: Re: Error on start up
Posted by [Carrierll](#) on Tue, 10 Apr 2007 22:12:11 GMT
[View Forum Message](#) <> [Reply to Message](#)

I HAD THIS AS WELL! AND I SHALL SPAM ALL CAPS TO... I got bored...

MS have a fix, let me find it...
<http://support.microsoft.com/kb/935448/en-us>

Enjoy.
(The cause is two DLLs in security updates for Windows with conflicting base ranges that break the RealTek Audio Control Panel... somehow...)

Subject: Re: Error on start up
Posted by [Aprime](#) on Tue, 10 Apr 2007 22:37:56 GMT
[View Forum Message](#) <> [Reply to Message](#)

Hahaha, thank God I just got a new soundcard.

Subject: Re: Error on start up
Posted by [Creed3020](#) on Wed, 11 Apr 2007 15:09:04 GMT
[View Forum Message](#) <> [Reply to Message](#)

Okay before you all freak out.

This was caused by a Windows Update patch. You are running a Sound Driver Control panel that uses part of the system memory. The update made Windows think that is was for malicious intent.

There is a new Windows Update out today:

Quote:Size: 702 KB

Install this update to resolve an issue where certain third-party applications may not start, and you receive an error message: "Illegal System DLL Relocation" after you install security update KB925902 (MS07-017). After you install this item, you may have to restart your computer.

More information for this update can be found at <http://support.microsoft.com/kb/935448>

This should fix your system as it did mine.

Subject: Re: Error on start up
Posted by [Jerad2142](#) on Wed, 11 Apr 2007 15:59:13 GMT
[View Forum Message](#) <> [Reply to Message](#)

Yep I did get a new sound card, so that is the cause, thanks guys (ha I wonder what would have happened if I would have tried my why, probably no sound but that would have been funny).

Subject: Re: Error on start up
Posted by [Goztow](#) on Thu, 12 Apr 2007 06:49:31 GMT
[View Forum Message](#) <> [Reply to Message](#)

I had the same problem and google'ing this message gave me the answer at the 2nd hit...

Google is your friend.

Subject: Re: Error on start up
Posted by [Creed3020](#) on Thu, 12 Apr 2007 14:20:17 GMT
[View Forum Message](#) <> [Reply to Message](#)

Jerad Gray wrote on Wed, 11 April 2007 11:59 Yep I did get a new sound card, so that is the cause, thanks guys (ha I wonder what would have happened if I would have tried my why, probably no sound but that would have been funny).

You bought a whole new sound card because of this error?

If so that was a waste of money. MS already released a Windows Update Patch to fix this error. Just update your PC and the error will go away.

Subject: Re: Error on start up
Posted by [icedog90](#) on Thu, 12 Apr 2007 20:36:58 GMT
[View Forum Message](#) <> [Reply to Message](#)

Believe it or not I had to fix this same exact problem on someone's laptop JUST a few days ago. After searching Google for the problem the solution was easy, since the laptop had Realtek integrated sound. Just updated the driver and the error was gone.

Subject: Re: Error on start up
Posted by [Viking](#) on Thu, 12 Apr 2007 21:19:06 GMT
[View Forum Message](#) <> [Reply to Message](#)

Or ask at www.overclock.net

Subject: Re: Error on start up
Posted by [Jerad2142](#) on Fri, 13 Apr 2007 17:14:57 GMT
[View Forum Message](#) <> [Reply to Message](#)

Creed3020 wrote on Thu, 12 April 2007 08:20Jerad Gray wrote on Wed, 11 April 2007 11:59Yep I did get a new sound card, so that is the cause, thanks guys (ha I wonder what would have happened if I would have tried my why, probably no sound but that would have been funny).

You bought a whole new sound card because of this error?

If so that was a waste of money. MS already released a Windows Update Patch to fix this error. Just update your PC and the error will go away.
New sound card was bought previous to the error, which was fixed, which is now working perfectly fine.
