
Subject: Level editor - Presets are empty
Posted by [handelfix](#) on Sat, 15 Apr 2006 14:30:45 GMT
[View Forum Message](#) <> [Reply to Message](#)

All folders in the Preset-tree are empty!!

What shall I do that the editor start working normal?

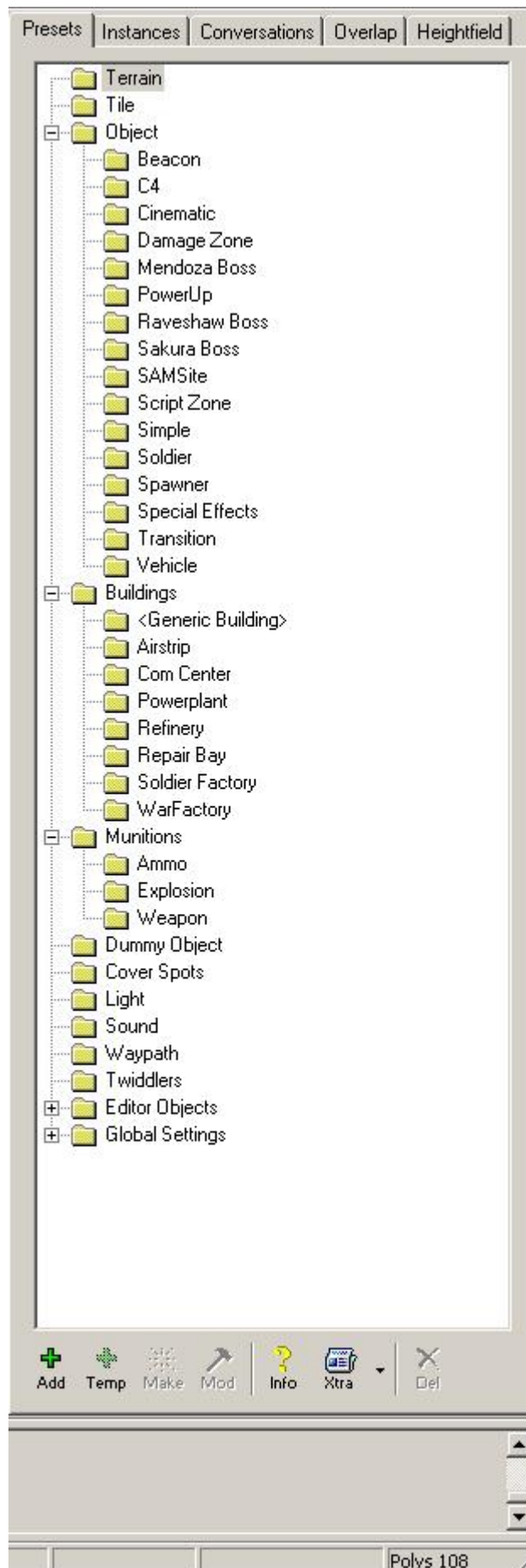
(CnC First decade renegade version)

until now i have done:
reinstalled the editor
re-downloaded the editor setup and installed again

Plz. HELP!!!!

File Attachments

1) [Unbenannt.JPG](#), downloaded 758 times



Subject: Re: Level editor - Presets are empty
Posted by [bisen11](#) on Sat, 15 Apr 2006 18:17:48 GMT
[View Forum Message](#) <> [Reply to Message](#)

Is there an objects.ddb in the preset folder?

Subject: Re: Level editor - Presets are empty
Posted by [Kamuix](#) on Sat, 15 Apr 2006 18:26:37 GMT
[View Forum Message](#) <> [Reply to Message](#)

That will happen when you start saving your presets. Than somehow LE gets ended before it gets a chance to finish saving.
Just make another mod and paste the presets from that folder back into your original one.

Subject: Re: Level editor - Presets are empty
Posted by [Major Mike](#) on Sat, 15 Apr 2006 18:59:26 GMT
[View Forum Message](#) <> [Reply to Message](#)

This is a bug caused by The First Decade. So far I haven't found a solution to fix this.

Subject: Re: Level editor - Presets are empty
Posted by [handelfix](#) on Sat, 15 Apr 2006 19:32:24 GMT
[View Forum Message](#) <> [Reply to Message](#)

Ok,...not ok...

there is no "objects.ddb" and no "preset folder"

AND there is no one created when i create a new mod...

ok found the objects.ddb in the Always2.dat and now the editor is crashing when i load a mod with the presets...

Subject: Re: Level editor - Presets are empty
Posted by [Kamuix](#) on Sat, 15 Apr 2006 20:17:06 GMT
[View Forum Message](#) <> [Reply to Message](#)

Do not use the objects.ddb that is in always2.dat. I heard someone on these forums say it does'nt work.

Subject: Re: Level editor - Presets are empty
Posted by [handelfix](#) on Sat, 15 Apr 2006 20:34:49 GMT
[View Forum Message](#) <> [Reply to Message](#)

Ok, does anyone have a link to this data so i can download it? (i have only the corrupt one)

Subject: Re: Level editor - Presets are empty
Posted by [handelfix](#) on Sun, 16 Apr 2006 22:22:38 GMT
[View Forum Message](#) <> [Reply to Message](#)

WIN!!!!!!

OK found the problem a reg-key was wrong somewhere in the registry
....\Westwood\Renegade\

key:
"InstallPath" was wrong

just corrected it and createt a new mod lookie lookie all presets appeared!!!

EDIT:

exact position->
HKEY_LOCAL_MACHINE\SOFTWARE\Westwood\Renegade
key: InstallPath

Subject: Re: Level editor - Presets are empty
Posted by [Major Mike](#) on Mon, 17 Apr 2006 02:44:45 GMT
[View Forum Message](#) <> [Reply to Message](#)

Excellent! Great job on that, maybe we could get this topic pinned as the fix?

Subject: Re: Level editor - Presets are empty
Posted by [bbtKiller](#) on Sun, 13 Aug 2006 18:07:54 GMT
[View Forum Message](#) <> [Reply to Message](#)

Btw, don't forget to do: Start > Run > Regedit

Else you can search for the right files (a).
