
Subject: Need Help Nightma12
Posted by [SbhSilent](#) on Sat, 21 Jan 2006 00:27:24 GMT
[View Forum Message](#) <> [Reply to Message](#)

Ok WTF I have your nightregulator and it does not work sooooo WTF what i do for the fds is what this is what happend.....

[7:24:43 PM] Checking For Available Updates.
[7:24:45 PM] ERROR: The Update Server Is Unavailable At This Time, Sorry For Any Inconvinience.
[7:24:45 PM] Fetching News...
[7:24:46 PM] ERROR: The News Server Is Unavailable At This Time, Sorry For Any Inconvenience.
[7:24:46 PM] Flushing Player Database Cache...
[7:24:50 PM] Database Cleared!
[7:24:50 PM] Importing Advanced NightRegulator Settings From Config File...
[7:24:50 PM] Finished Importing Settings.
[7:24:51 PM] Archiving Old Results Files...
[7:24:51 PM] Finished Archiving Old Results Files.
[7:24:51 PM] FDS Connection Established!
And Nothing Happens After That so WTF AM I SOPOST TO DO???????

i was wondering if u could send me a server and i can tell u what my stuff are!!!! so plz reply back 2 me plz... o and for how ever is in the black-cell.net on the internet and i cant post so help me out with that 2 PIECE

Subject: Re: Need Help Nightma12
Posted by [=HT=T-Bird](#) on Sat, 21 Jan 2006 12:42:56 GMT
[View Forum Message](#) <> [Reply to Message](#)

The bot is ready...try typing !gi into IRC...

Subject: Re: Need Help Nightma12
Posted by [Nightma12](#) on Sat, 21 Jan 2006 20:41:16 GMT
[View Forum Message](#) <> [Reply to Message](#)

check your renrem settings

and perhaps allow NR a connection to the internet?

Subject: Re: Need Help Nightma12
Posted by [EA-DamageEverything](#) on Sun, 22 Jan 2006 20:24:40 GMT
[View Forum Message](#) <> [Reply to Message](#)

To get NR collecting Datas from the FDS, copy the server.ini into the folder <NRdir>\Logs\FDS\renlog

To get NR running with SS-CP1.3 and SSAOW 1.34, change the following in your server2.ini=
FDSLogRoot=renlog
Enable_Gamelog=0
Finally sometimes RG is needed. So DL RG SSC 1.02 and extract it into your RenegadeFDS folder. It creates a folder "renguard_SSC" then.

Go there and open the file renguard.cfg and edit it. You can see my config here for example (you MUST take your OWN paths)=

```
# Path to svrcfg_cnc.ini  
FDSConfigFile = C:\Programme\RenegadeFDS\Server\Data\svrcfg_cnc.ini  
# Path to Main Server Dir, do not forget trailing slash.  
FDSLogFilePath = C:\Programme\NightRegulator\Logs\FDS\RenLog\  
-don't forget the Slash at the end-
```

I got it this way and it's working fine. If you like, you can enable all killmessages, vehicleCreates etc... I never experienced any crashes with those settings.

By the way, set up IRC and be happy! Don't forget to allow NR full access to the internet in case of using a firewall...

Subject: Re: Need Help Nightma12

Posted by [Nightma12](#) on Sun, 22 Jan 2006 22:28:13 GMT

[View Forum Message](#) <> [Reply to Message](#)

EA-DamageEverything wrote on Sun, 22 January 2006 14:24To get NR collecting Datas from the FDS, copy the server.ini into the folder <NRdir>\Logs\FDS\renlog

To get NR running with SS-CP1.3 and SSAOW 1.34, change the following in your server2.ini=
FDSLogRoot=renlog
Enable_Gamelog=0
Finally sometimes RG is needed. So DL RG SSC 1.02 and extract it into your RenegadeFDS folder. It creates a folder "renguard_SSC" then.

Go there and open the file renguard.cfg and edit it. You can see my config here for example (you MUST take your OWN paths)=

```
# Path to svrcfg_cnc.ini  
FDSConfigFile = C:\Programme\RenegadeFDS\Server\Data\svrcfg_cnc.ini  
# Path to Main Server Dir, do not forget trailing slash.  
FDSLogFilePath = C:\Programme\NightRegulator\Logs\FDS\RenLog\  
-don't forget the Slash at the end-
```

I got it this way and it's working fine. If you like, you can enable all killmessages, vehicleCreates etc... I never experienced any crashes with those settings.

By the way, set up IRC and be happy! Don't forget to allow NR full access to the internet in case of using a firewall...

what version of NR are you running? alot of the stuff u mentioned isnt needed at all, lol

the server.ini copy + pasteing is over if u want to run the RG SSC

settings FDSLogRoot=renlog would make NR bitch wen u try to make it connect to FDS and it would edit the file itself to fix it

hes problem is a renrem problem, else it wouldnt be able to get that far, lol

Sbh: could you post a picture of your FDS Settings Tab + Your Main tab once yourve hit FDS Connect and had all that text come up?

also make sure the FDS IS ACCUALLY RUNNING!

Subject: Re: Need Help Nightma12

Posted by [EA-DamageEverything](#) on Mon, 23 Jan 2006 08:09:56 GMT

[View Forum Message](#) <> [Reply to Message](#)

Nightma12 wrote on Sun, 22 January 2006 23:28what version of NR are you running? alot of the stuff u mentioned isnt needed at all, lol

the server.ini copy + pasteing is over if u want to run the RG SSC

settings FDSLogRoot=renlog would make NR bitch wen u try to make it connect to FDS and it would edit the file itself to fix it

I'm running 0.21 and it wasn't that much I have posted. Just a few settings and your Bot understands the normal SSAOW (you posted on the aohost forums it wouldn't work and needs another SSAOW!) instead of the worse SSAOW-Snipermod which can be DLed at aohost.co.uk. No offense, but there are some newer and better Snipermods available.

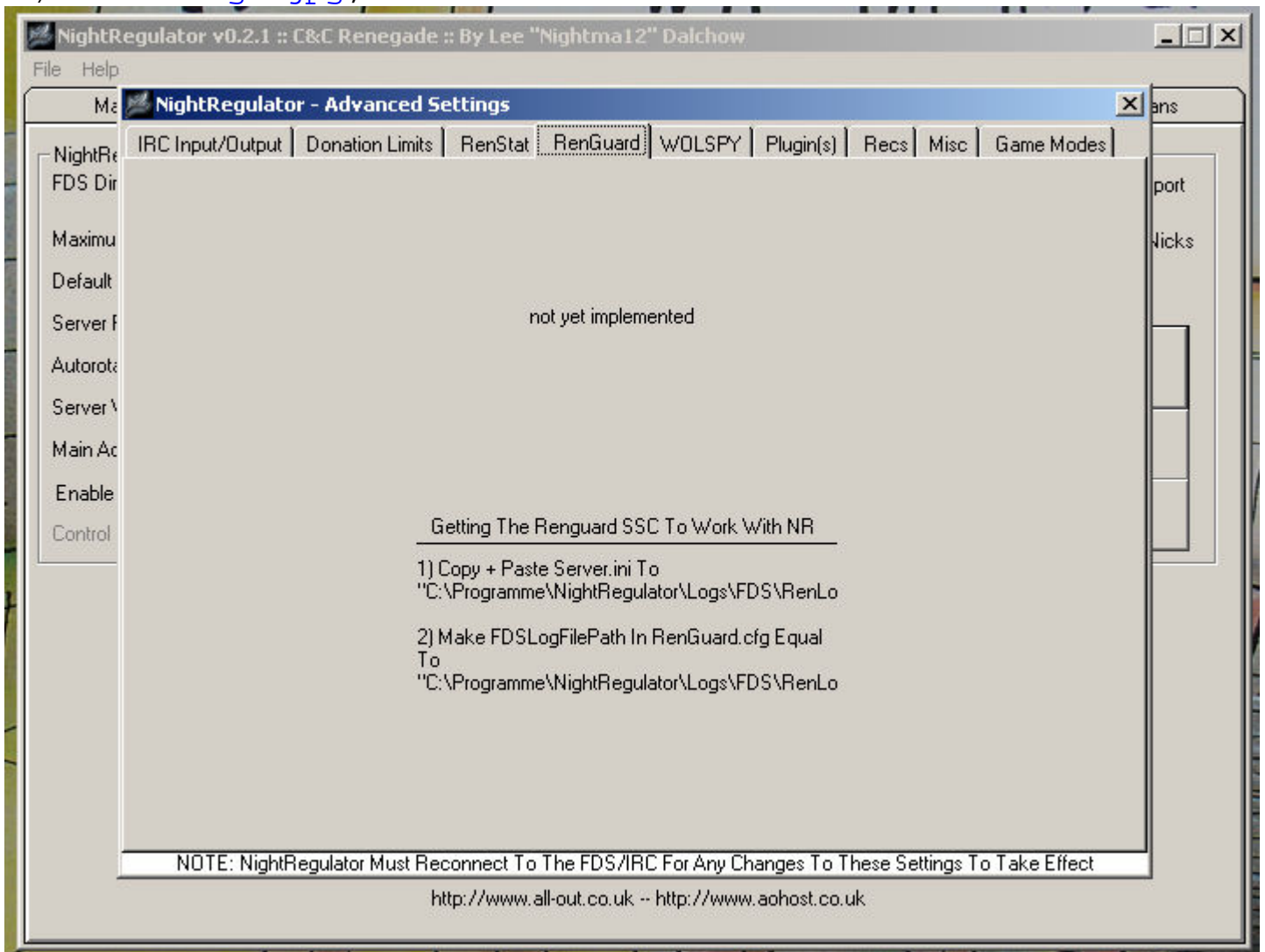
OK, I can remove the copied server.ini from the renlog folder without having any issues? But then tell me plz why you haven't removed this from the Bot=

My experience was that only with renlog + disabled gamelog, the killmsg's, createmsg's etc are working. The FDS is showing them in the console (SSAOW just works even without a Bot -didn't know before) and NR grabs the information right away from it without bitching up. All of what NR is showing up can be transmitted to the IRC channel. So for me that is the easy way to get the better Bot running with the FDS and SSAOW 1.34. SSAOW 1.4 is already on my HDD, but I didn't test it yet.

EDIT= When has NR 2.00 arrived it's final status and will going out to public?

File Attachments

1) [NRsettings.jpg](#), downloaded 841 times



Subject: Re: Need Help Nightma12

Posted by [Nightma12](#) on Mon, 23 Jan 2006 17:55:22 GMT

[View Forum Message](#) <> [Reply to Message](#)

u only copy + paste server.ini if you want RenGuard on your server

2.0 is already out of BETA + public

basically whitedragon broke NR support in 1.4 so i released 2.1 which patched up NR and allowed NR to work with 1.4

thing is, it scans ssaow.ini now instead of server2.ini

so its checking ssaow.ini for errors n makes sure ssaow.ini IS configured to work with NR, and in theory, it should auto-disable SSAOW support since it cannot locate an ssaow.ini

but hey, if it works, dont break it, lol

Subject: Re: Need Help Nightma12

Posted by [EA-DamageEverything](#) on Wed, 25 Jan 2006 17:58:13 GMT

[View Forum Message](#) <> [Reply to Message](#)

I'm working with SSAOW 1.34 -this doewsn't have the ssaow.ini. But hey thx for posting this, I also have 1.4. To make it short, I can only enable SSAOW in the NR Controls if I have the 1.4 becaus of the ssaow.ini? Would be xplaining itself why I couldn't turn it on.

Ah, and= Do you mean NR 0.21 when u say 2.0/2.1? Didn't get that right. I thought you'll releasie 2.00 soon for example.

Subject: Re: Need Help Nightma12

Posted by [Nightma12](#) on Fri, 27 Jan 2006 22:16:29 GMT

[View Forum Message](#) <> [Reply to Message](#)

2.1 is the UPGRADE to 2.0
