

---

Subject: RG firewall issue

Posted by [runewood](#) on Fri, 25 Nov 2005 20:17:37 GMT

[View Forum Message](#) <> [Reply to Message](#)

---

I have been using RG for the last several months with no issues. After playing for 3 hours today there were no issues. When I tried to get on after a break it said "Unable to initialize network, perhaps your firewall is incompatible with RG" My Firewall says its allowing full access to RG. It has always allowed me to use it before. Does anyone know whats wrong and how to fix it?

---

---

Subject: Re: RG firewall issue

Posted by [Enforcer](#) on Fri, 25 Nov 2005 20:19:39 GMT

[View Forum Message](#) <> [Reply to Message](#)

---

Renguard is currently down

---

---

Subject: Re: RG firewall issue

Posted by [runewood](#) on Fri, 25 Nov 2005 20:25:27 GMT

[View Forum Message](#) <> [Reply to Message](#)

---

Toshay.

---

---

Subject: Re: RG firewall issue

Posted by [Pkevin](#) on Sun, 27 Nov 2005 13:07:39 GMT

[View Forum Message](#) <> [Reply to Message](#)

---

I'm having same problem. It was working for me last night on 11/26/05 I wish i new how to fix the problem.

---

---

Subject: Re: RG firewall issue

Posted by [DrunkenSamFisher](#) on Sun, 27 Nov 2005 13:21:46 GMT

[View Forum Message](#) <> [Reply to Message](#)

---

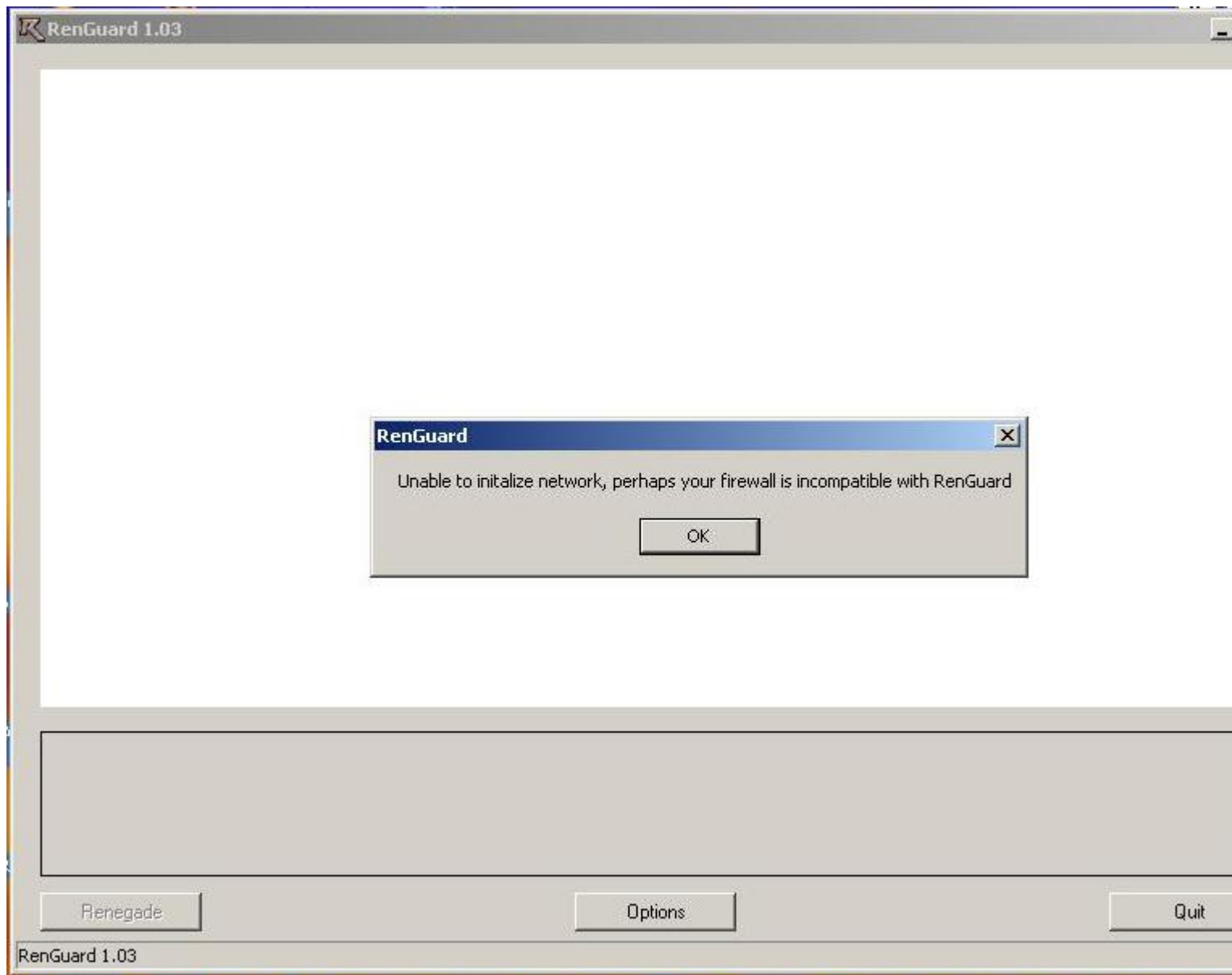
I too am having the same prob but i was lookin around on here and found something like the rg being down so im thinkin its down but what i want to know is if it is down can we still play with out gettin kicked out  
thanks ps can wait for the new rg lol

---

### File Attachments

1) [RG firewall issue.JPG](#), downloaded 1002 times

---



---

Subject: Re: RG firewall issue

Posted by [=HT=T-Bird](#) on Sun, 27 Nov 2005 16:21:21 GMT

[View Forum Message](#) <> [Reply to Message](#)

---

RG was down for a while a couple of days ago (I had the same issue)

---

Subject: Re: RG firewall issue

Posted by [Son Gohan](#) on Sun, 11 Dec 2005 18:25:11 GMT

[View Forum Message](#) <> [Reply to Message](#)

---

Goody. I thought it was a computer problem that I'm dealing with.

---

Subject: Re: RG firewall issue  
Posted by [omega79](#) on Sun, 11 Dec 2005 18:32:03 GMT  
[View Forum Message](#) <> [Reply to Message](#)

---

that happens often the past days ... guess it is time for an explanation, would be a nice thing

---

Subject: Re: RG firewall issue  
Posted by [Kanezor](#) on Sun, 11 Dec 2005 23:48:46 GMT  
[View Forum Message](#) <> [Reply to Message](#)

---

omega79 wrote on Sun, 11 December 2005 12:32that happens often the past days ... guess it is time for an explanation, would be a nice thing

Please pay attention to other topics. Shortly after the 1.04 beta started, mac went on vacation from all things Renegade (I hope you would also favor real life over a computer game). In the meantime, the other members of BHS have had to pick up where he left off, but we do not have the same type of experience as he does. Please be patient, we're working on these problems as fast as we can without wrecking whatever life we have in the real world.

---

Subject: Re: RG firewall issue  
Posted by [zipobob](#) on Mon, 12 Dec 2005 03:59:20 GMT  
[View Forum Message](#) <> [Reply to Message](#)

---

I AM MAD

the same problem happend to me about fire wall and i starteed messing with renegade files ,thought i could fix it but i made it wors  
i cant reinstall rg,i tried every thing  
i want new rg 1.04

---

Subject: Re: RG firewall issue  
Posted by [omega79](#) on Mon, 12 Dec 2005 04:24:11 GMT  
[View Forum Message](#) <> [Reply to Message](#)

---

Kanezor wrote on Sun, 11 December 2005 18:48omega79 wrote on Sun, 11 December 2005 12:32that happens often the past days ... guess it is time for an explanation, would be a nice thing

Please pay attention to other topics. Shortly after the 1.04 beta started, mac went on vacation from all things Renegade (I hope you would also favor real life over a computer game). In the meantime, the other members of BHS have had to pick up where he left off, but we do not have the same type of experience as he does. Please be patient, we're working on these problems as fast as we can without wrecking whatever life we have in the real world.

---

i can understand this, but it would be nice to have this as a news inside the renguard window ... i know everyone would understand that.  
you know, not all rg users are reading the forums .... like me, im just here once in a while.

oh and btw ... keep up the good work

---

---

Subject: Re: RG firewall issue  
Posted by [MegaMoo20](#) on Fri, 30 Dec 2005 22:52:04 GMT  
[View Forum Message](#) <> [Reply to Message](#)

---

I also get the firewall message. It gets very annoying. About how long does it take for it to fix itself?

Edit: Well it's fixed, and has been for 2 months

---

---

Subject: Re: RG firewall issue  
Posted by [Aprime](#) on Sat, 31 Dec 2005 00:40:31 GMT  
[View Forum Message](#) <> [Reply to Message](#)

---

DrunkenSamFisher wrote on Sun, 27 November 2005 08:21I too am having the same prob but i was lookin around on here and found something like the rg being down so im thinkin its down but what i want to know is if it is down can we still play with out gettin kicked out thanks ps can wait for the new rg lol

I'm getting a similar issue, the network isn't down and I turned my firewall off... What the hell could it possibly be?

Edit: Nevermind, fixed.

---