

---

Subject: Re: RA\_Fjord

Posted by [Gen\\_Blacky](#) on Thu, 26 May 2011 16:43:22 GMT

[View Forum Message](#) <> [Reply to Message](#)

---

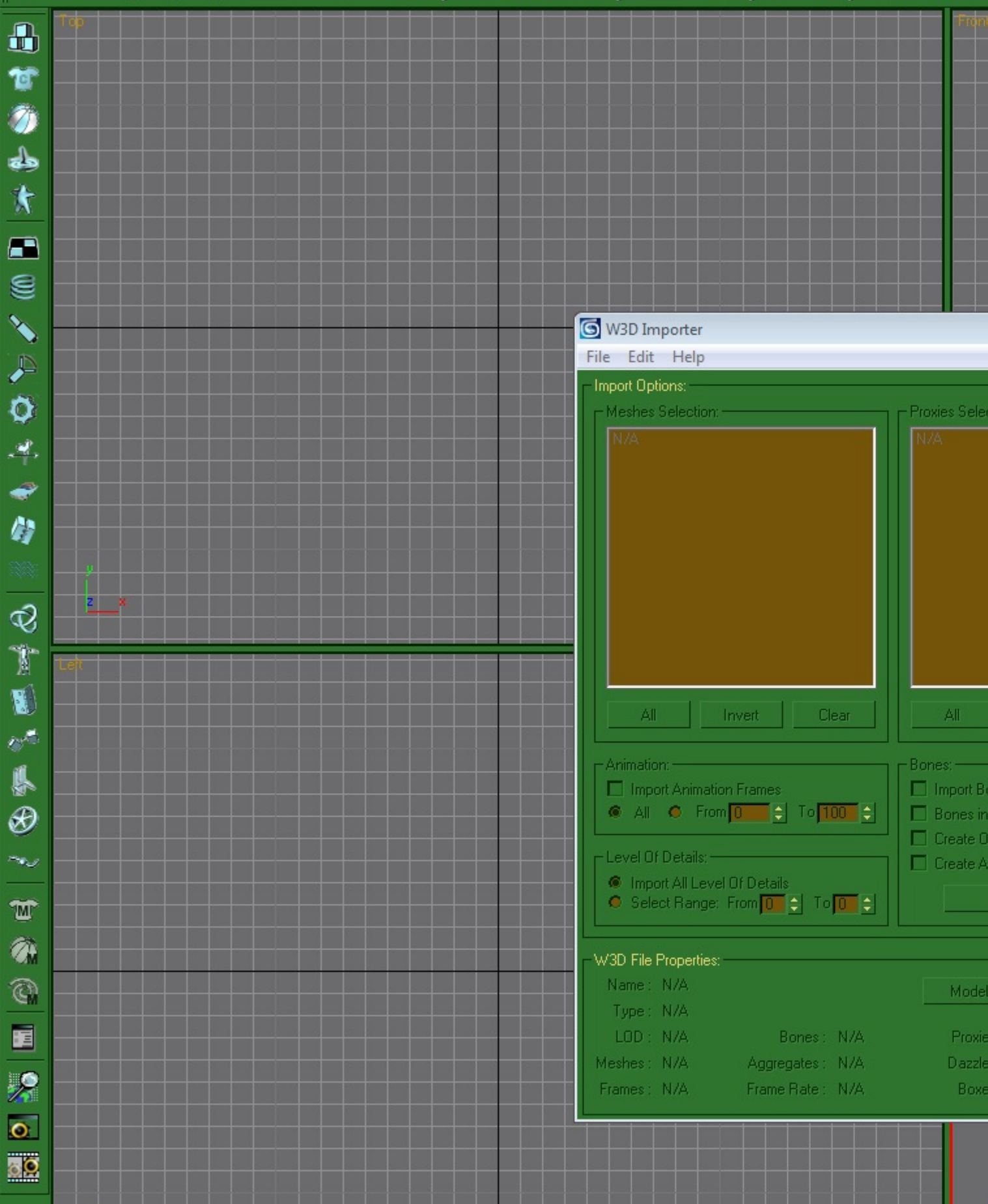
Renx w3d importer will work in 3ds max 8 or 9 got it working in both. I'm using 3dsmax 8 with the renx pack. What version are you using the newest version 2012 or something.

---

#### File Attachments

1) [3dsmax.jpg](#), downloaded 954 times

---



## W3D Importer

File Edit Help

### Import Options:

#### Meshes Selection:

N/A

All

Invert

Clear

#### Proxies Selection:

N/A

All

#### Animation:

☐ Import Animation Frames

☒ All ☐ From  To

#### Level Of Details:

☒ Import All Level Of Details

☐ Select Range: From  To

#### Bones:

☐ Import Bones

☐ Bones in

☐ Create O

☐ Create A

### W3D File Properties:

Name : N/A

Type : N/A

LOD : N/A

Meshes : N/A

Frames : N/A

Bones : N/A

Aggregates : N/A

Frame Rate : N/A

Model

Proxies

Dazzle

Boxes