

---

Subject: Help

Posted by [N1warhead](#) on Tue, 15 Sep 2009 05:46:36 GMT

[View Forum Message](#) <> [Reply to Message](#)

---

I just now started to make maps again for Rene, and I can't find a working 3ds max 8 exporter ANYWHERE.

Every time I do one, it always gives me this error.  
(download the JPG)

I've tried like from 4 different websites, it NEVER fixes. It's getting on my last nerve.

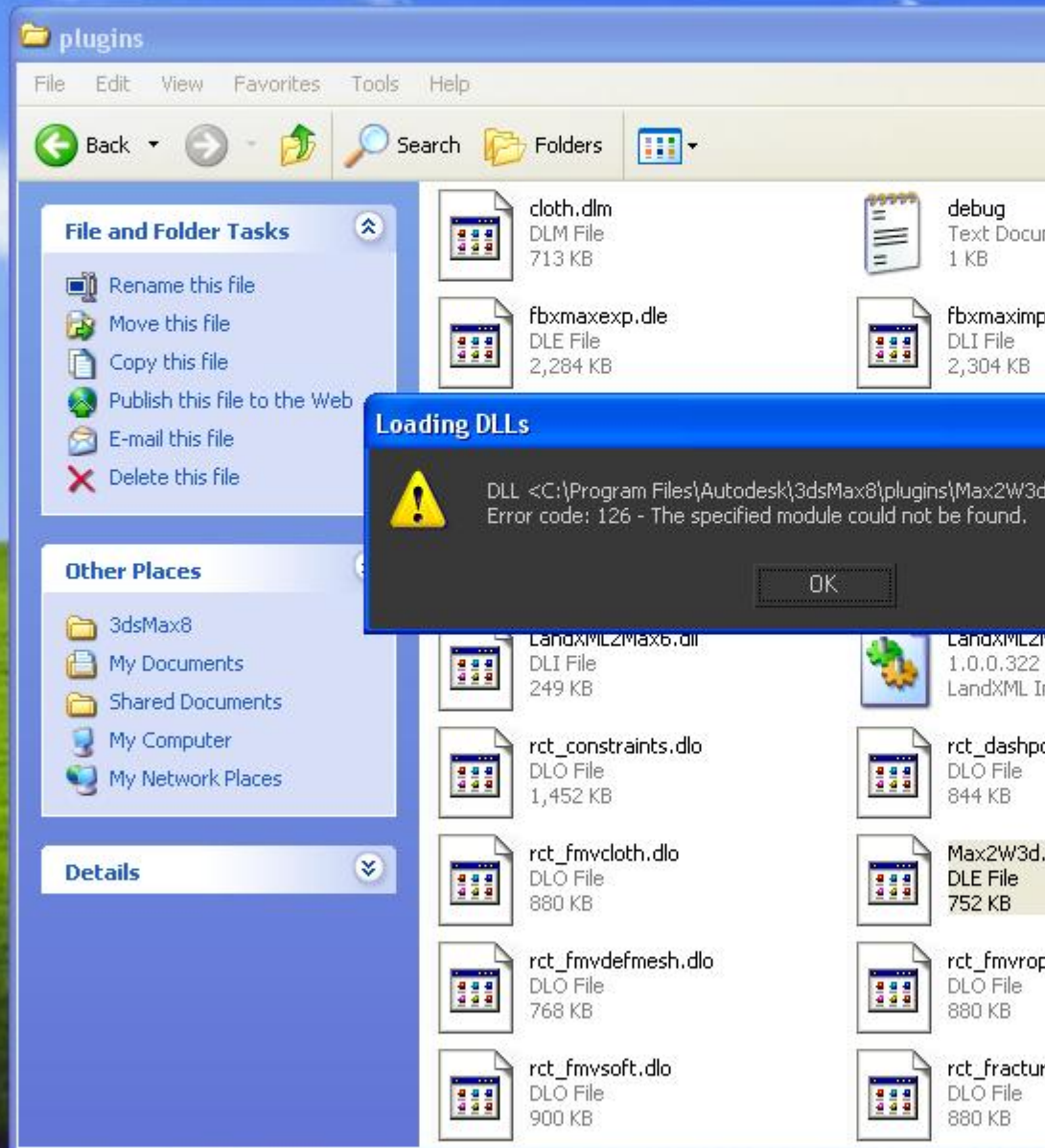
Thanks,  
N1warhead.

---

### File Attachments

1) [Help.JPG](#), downloaded 696 times

---



### Loading DLLs



DLL <C:\Program Files\Autodesk\3dsMax8\plugins\Max2W3d... Error code: 126 - The specified module could not be found.

OK