

---

Subject: Renegade editor

Posted by [Commando Burton](#) on Tue, 04 Dec 2007 04:15:22 GMT

[View Forum Message](#) <> [Reply to Message](#)

---

I have been going through a guide and I am at the part where you are using Renegade Editor and I loaded my map and I use the walk-thru thing and it crashes 1.

2.

3.

4.

5.

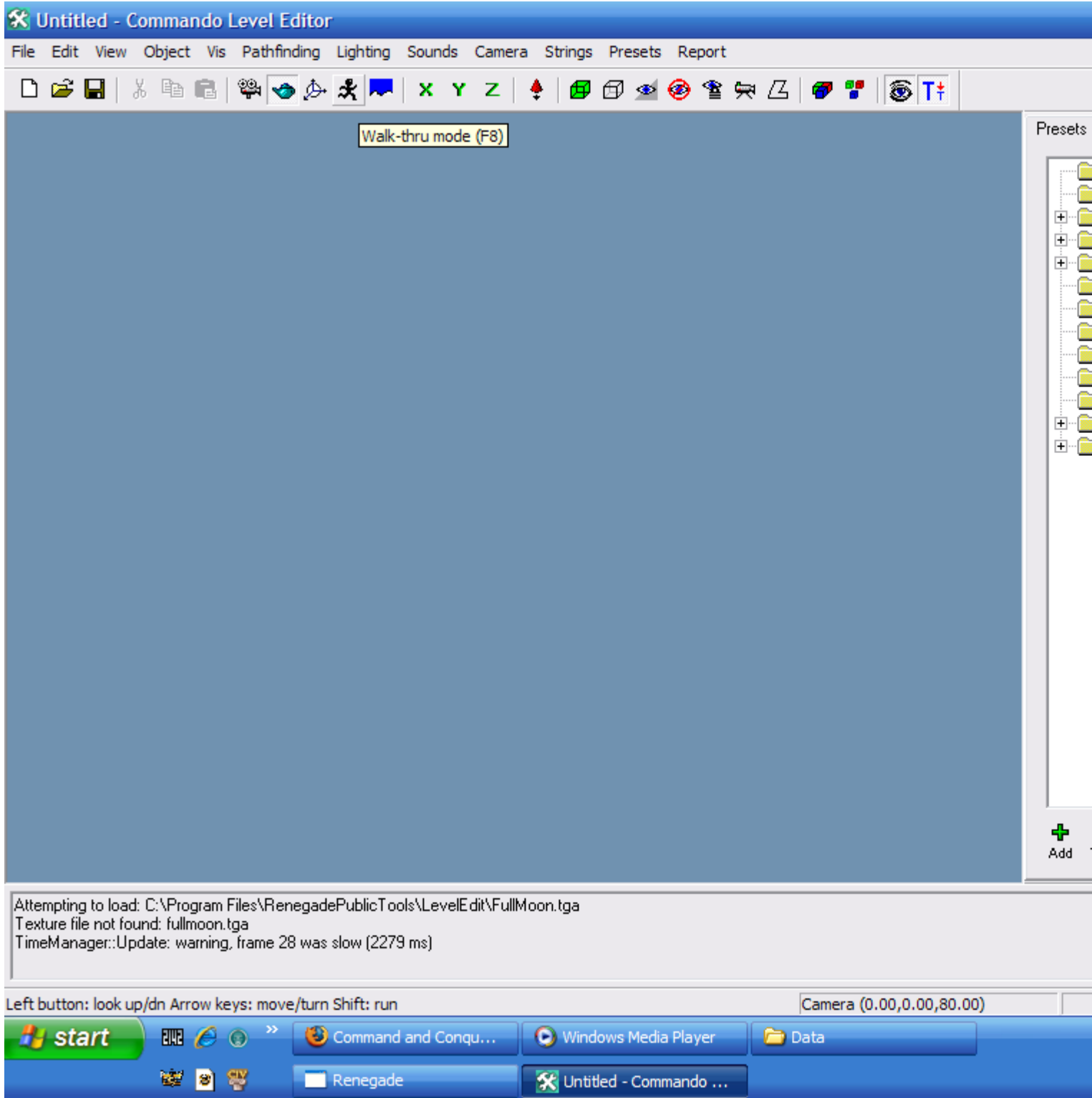
I just AM JUST STARTING.

I need help thank you.

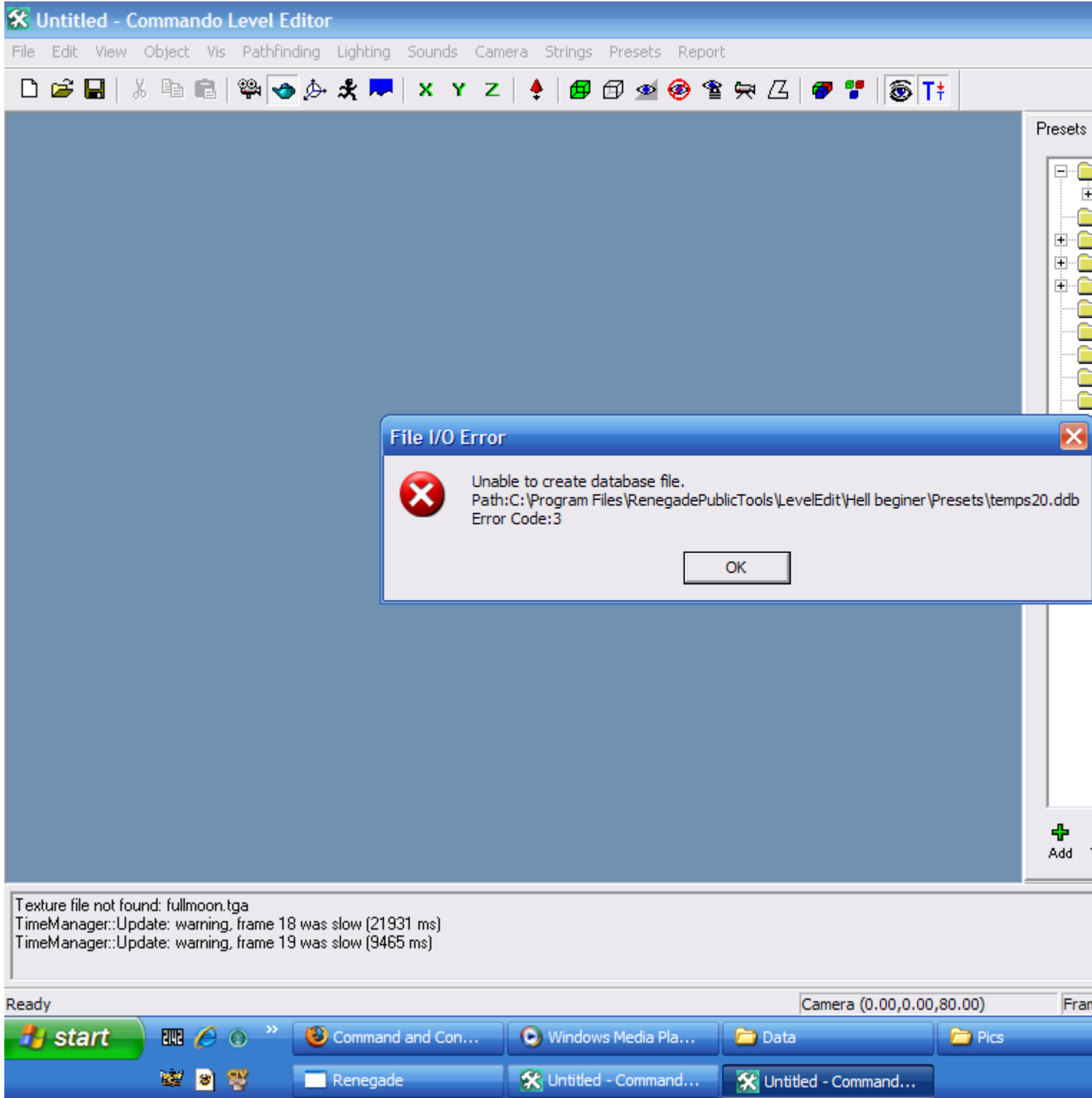
### File Attachments

---

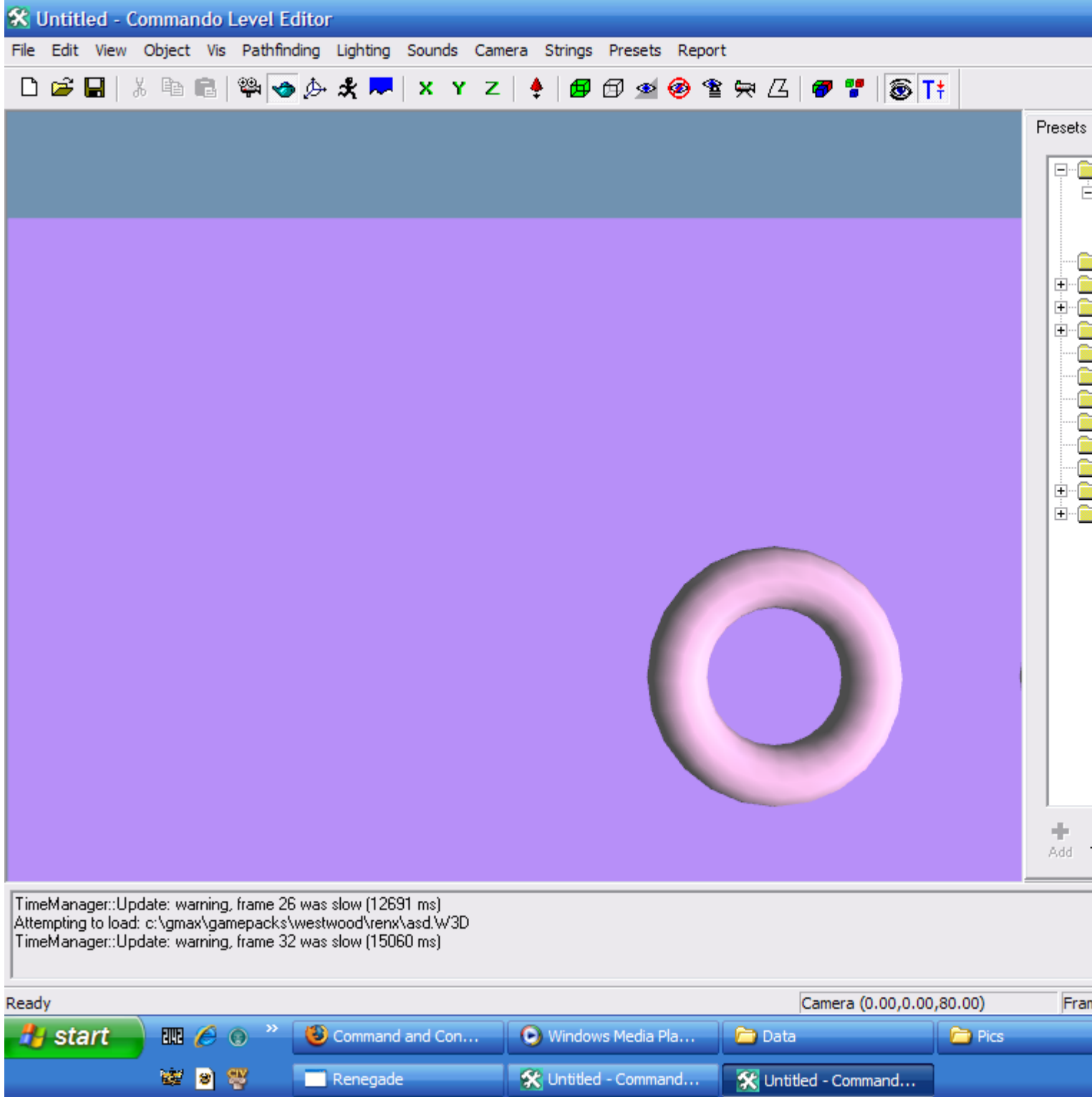
1) [ScreenShot00096.png](#), downloaded 695 times



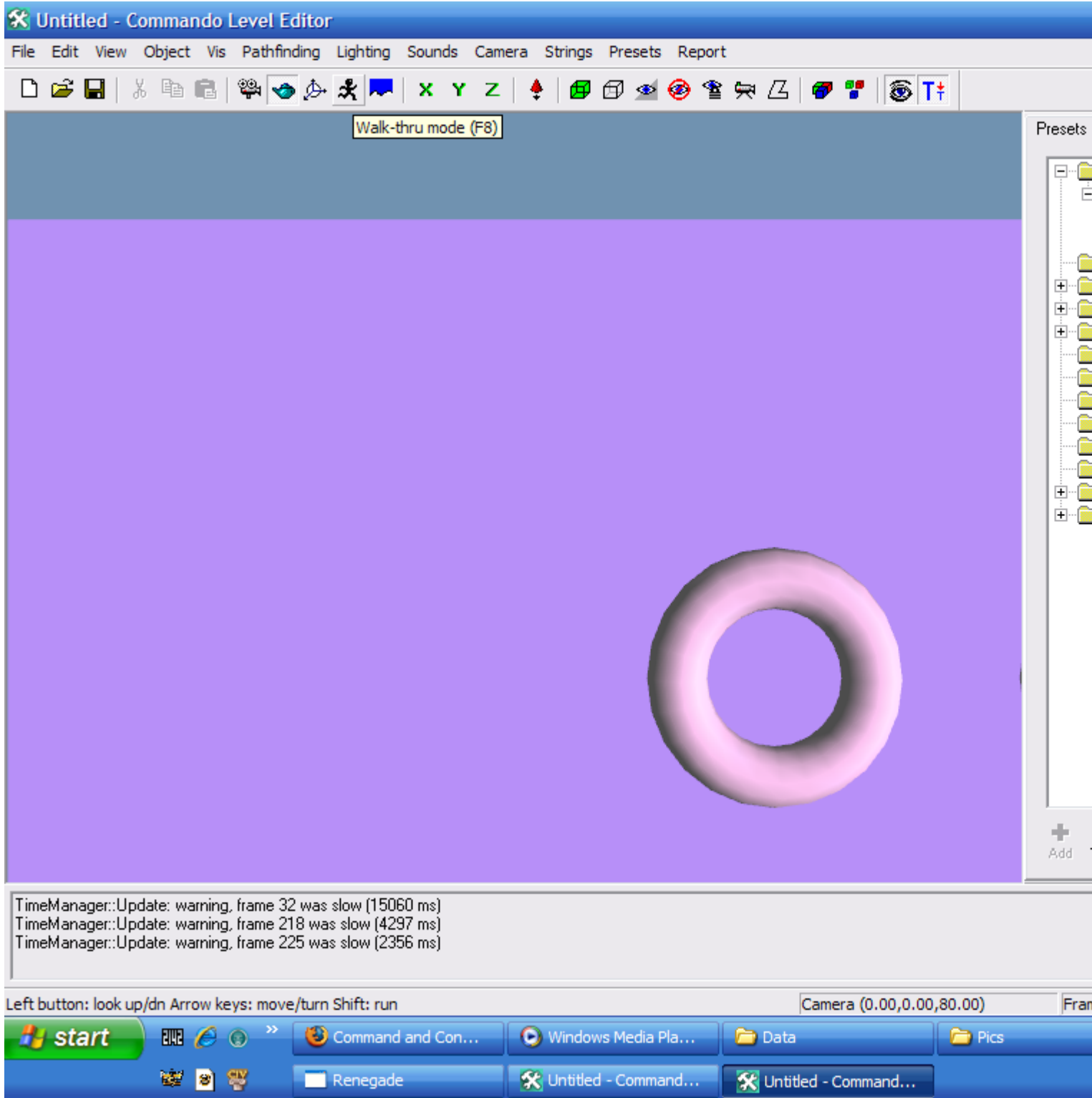
2) [ScreenShot00097.png](#), downloaded 700 times



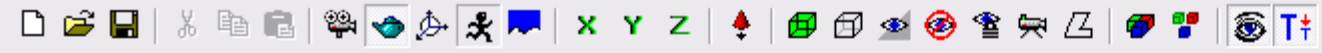
3) [ScreenShot00098.png](#), downloaded 690 times



4) [ScreenShot00099.png](#), downloaded 694 times



5) [ScreenShot00100.png](#), downloaded 695 times



Presets



**LevelEdit MFC Application**

**LevelEdit MFC Application has encountered a problem and needs to close. We are sorry for the inconvenience.**

If you were in the middle of something, the information you were working on might be lost.

For more information about this error, [click here](#).

Close

TimeManager::Update: warning, frame 218 was slow (4297 ms)  
TimeManager::Update: warning, frame 225 was slow (2356 ms)  
TimeManager::Update: warning, frame 230 was slow (3268 ms)

Ready

Camera (0.00,0.00,80.00)

