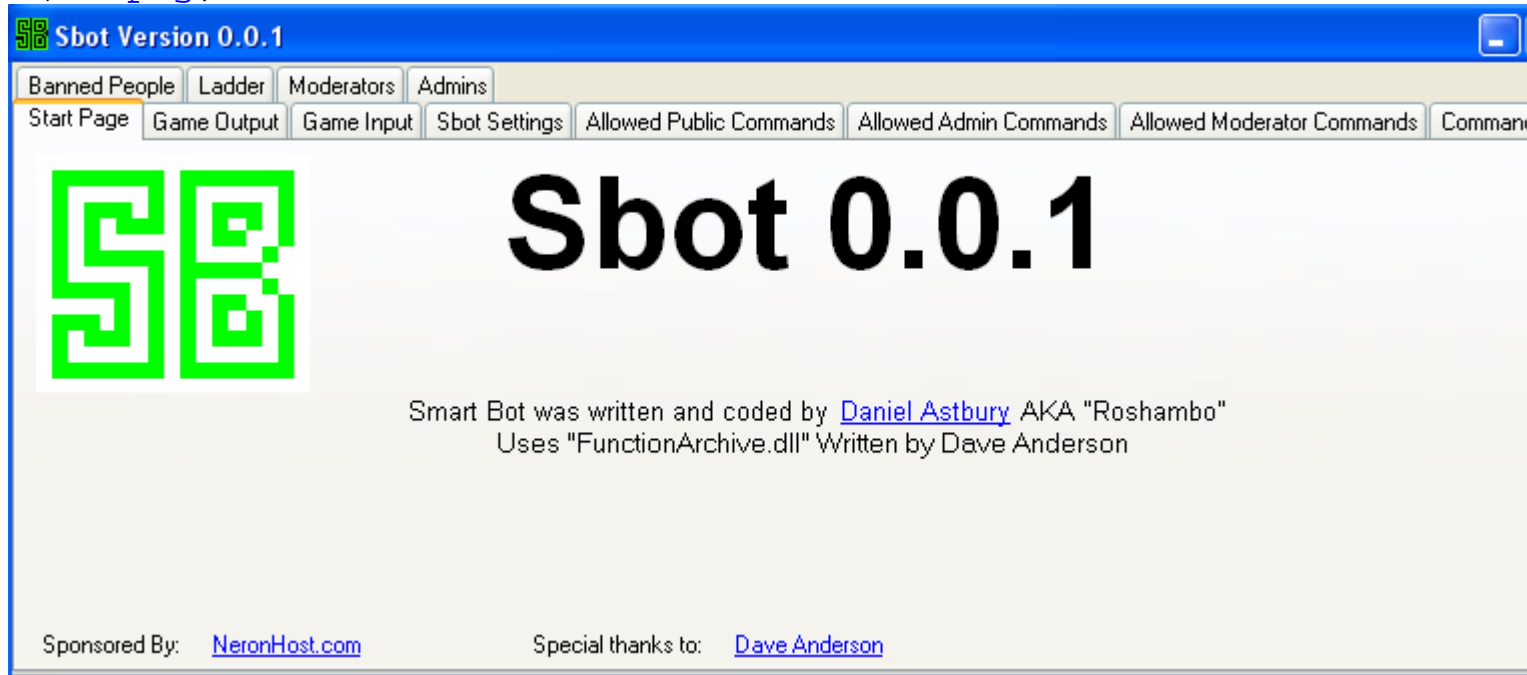
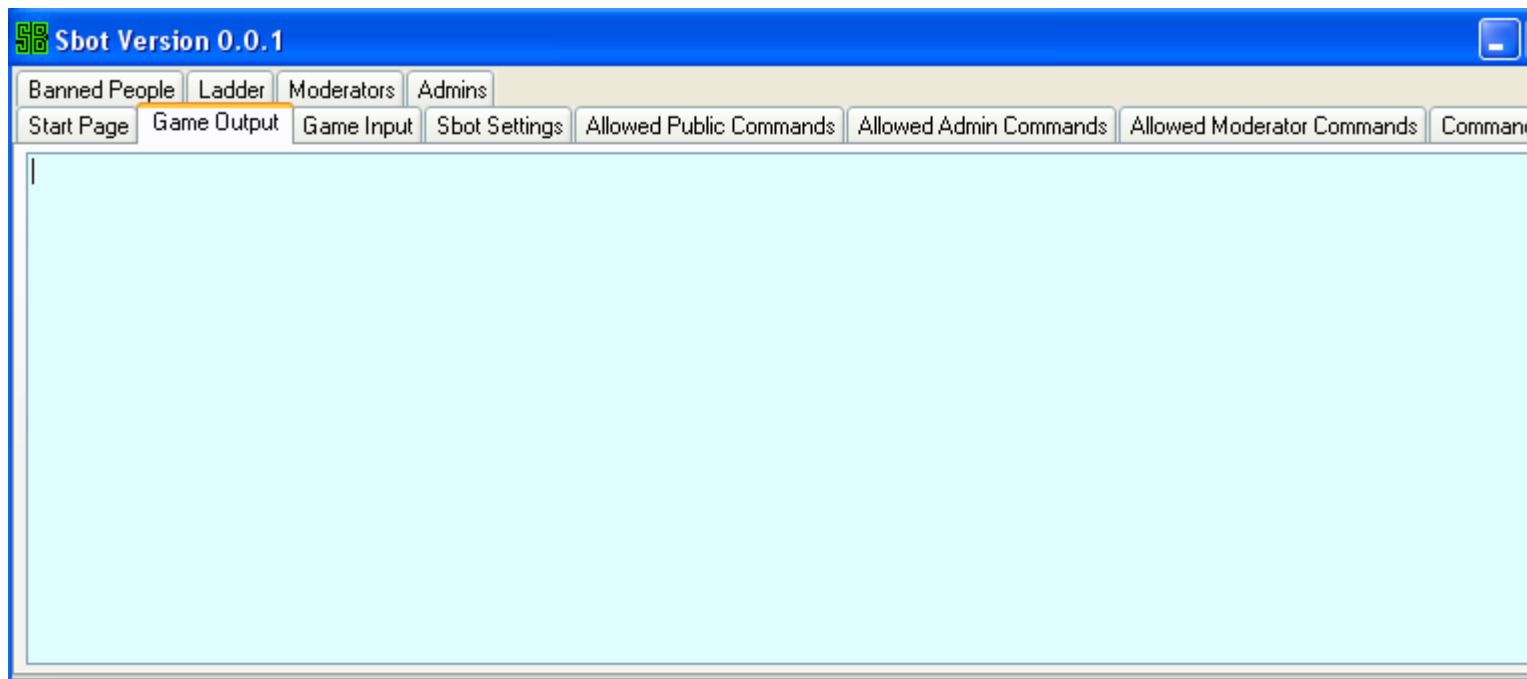

Subject: Re: Official SBot Thread
Posted by [jnz](#) on Sun, 21 Jan 2007 14:59:12 GMT
[View Forum Message](#) <> [Reply to Message](#)

File Attachments

1) [1.png](#), downloaded 1800 times

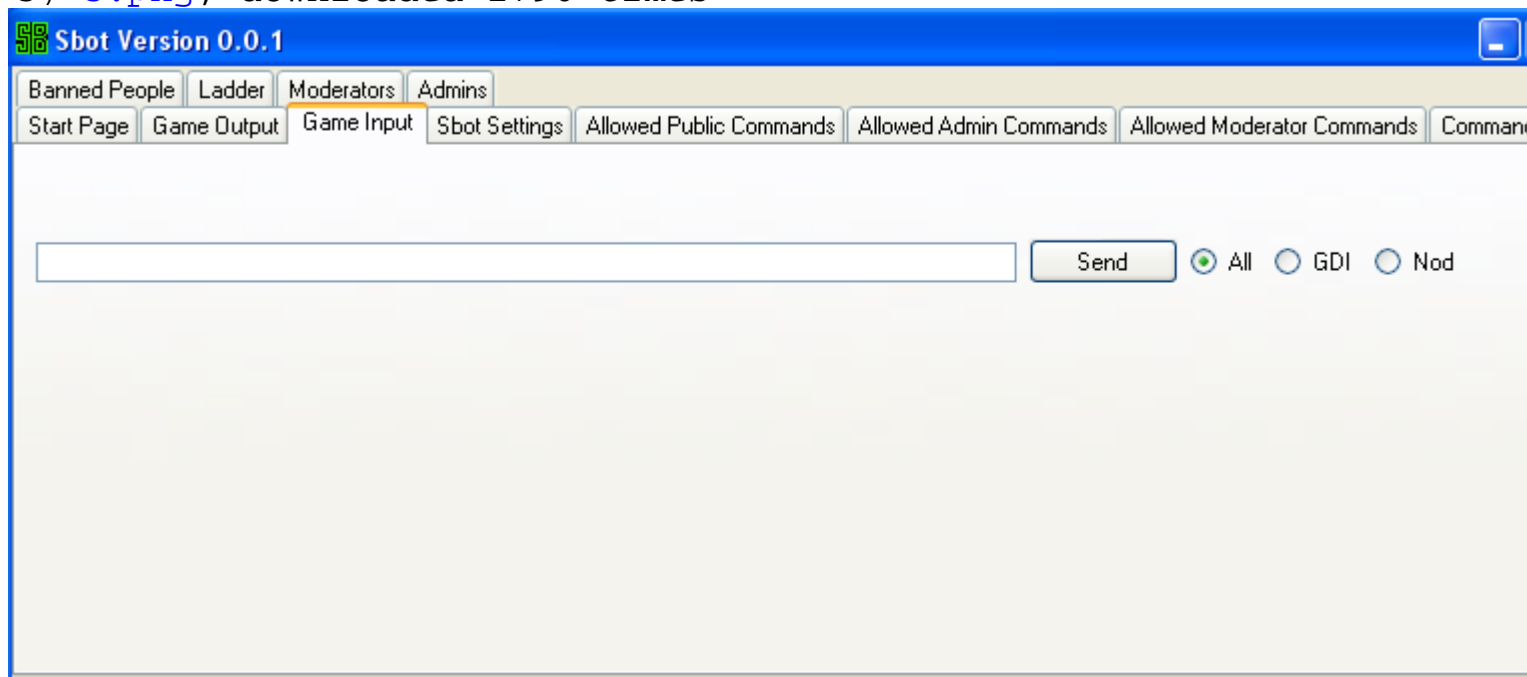


2) [2.png](#), downloaded 1778 times



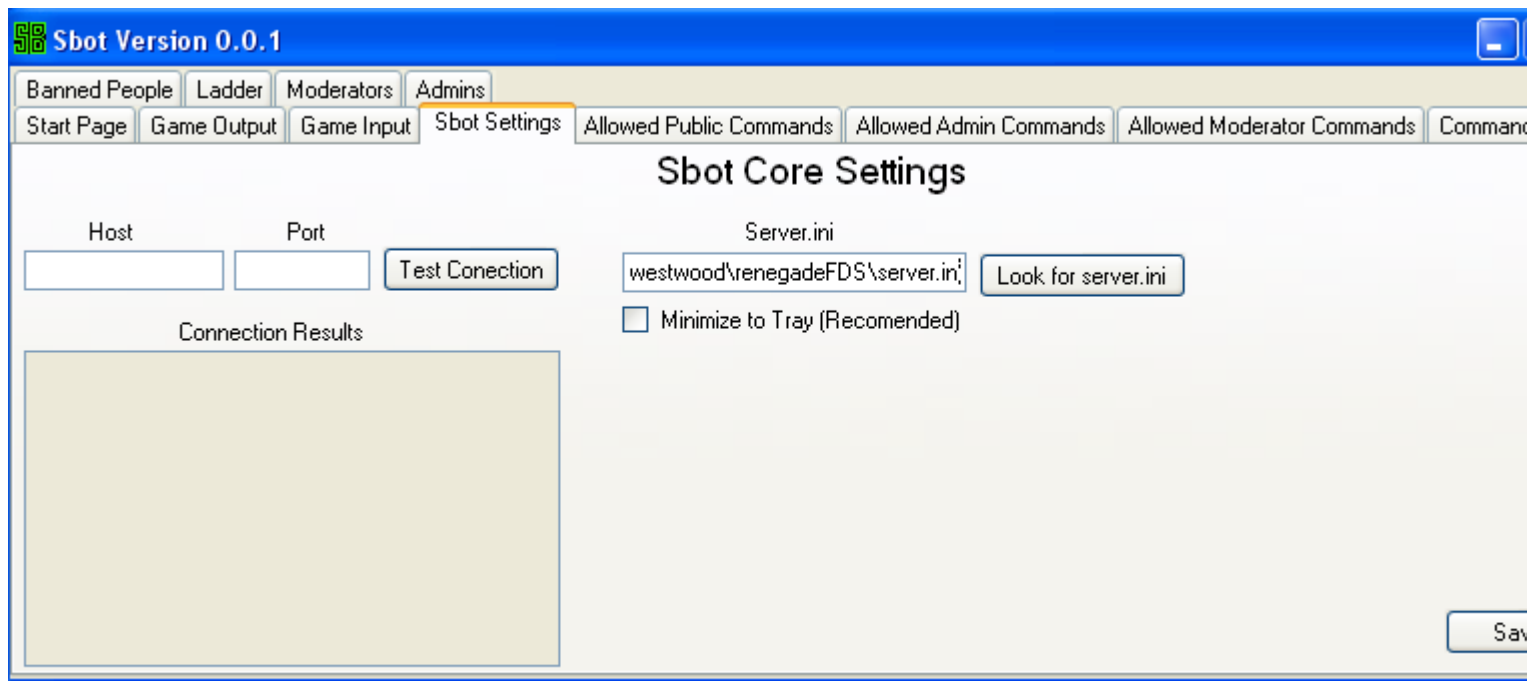
This will Just Give infomation on game output. EG "roshambo killed someone"

3) [3.png](#), downloaded 1790 times



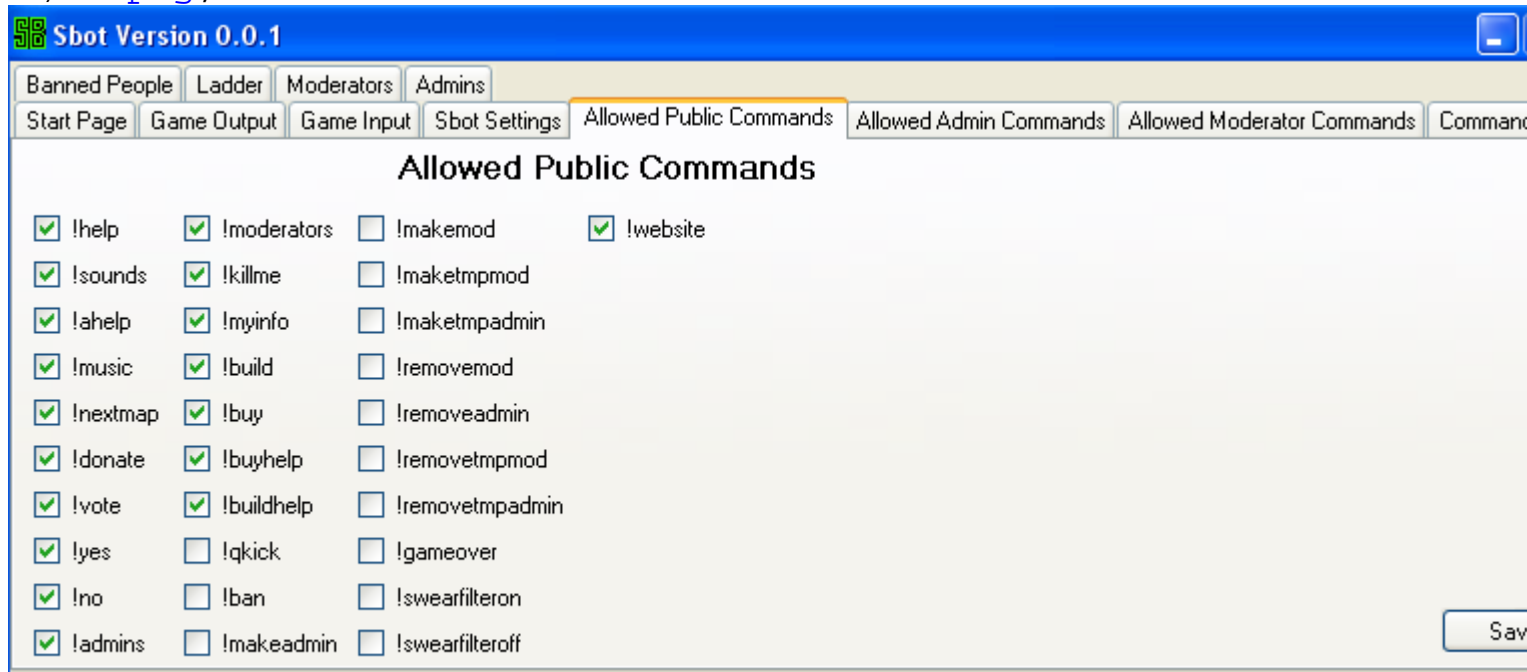
Game input allows you to interact with the game, here you will be able to bring building back to life. give plays point, money et you can take points, money. Spawn vehicals, more or less anything thats possible with the serverside engine.

4) [4.png](#), downloaded 1801 times



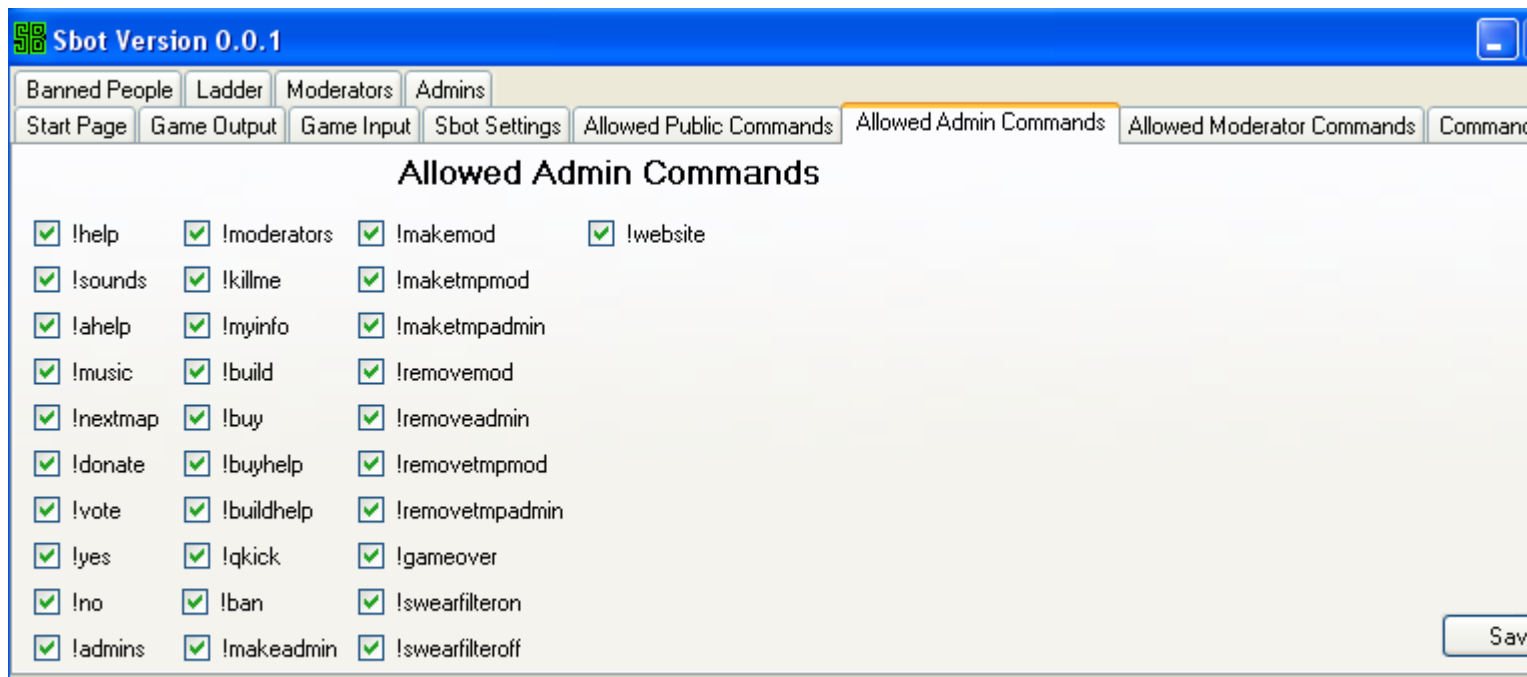
These are the only setting that need to be set in order for the Sbot to be run.

5) [5.png](#), downloaded 1782 times



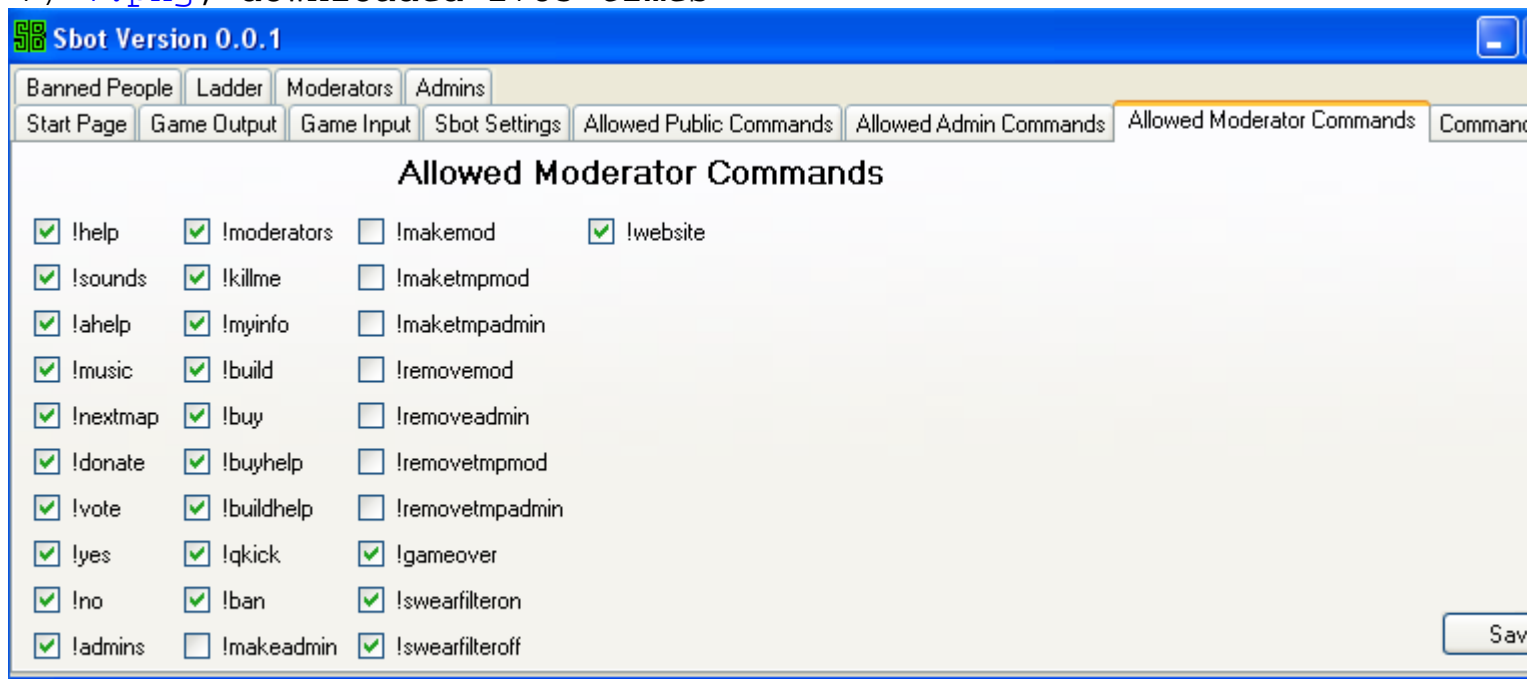
These are the commands that the public are allowed to use.

6) [6.png](#), downloaded 1773 times



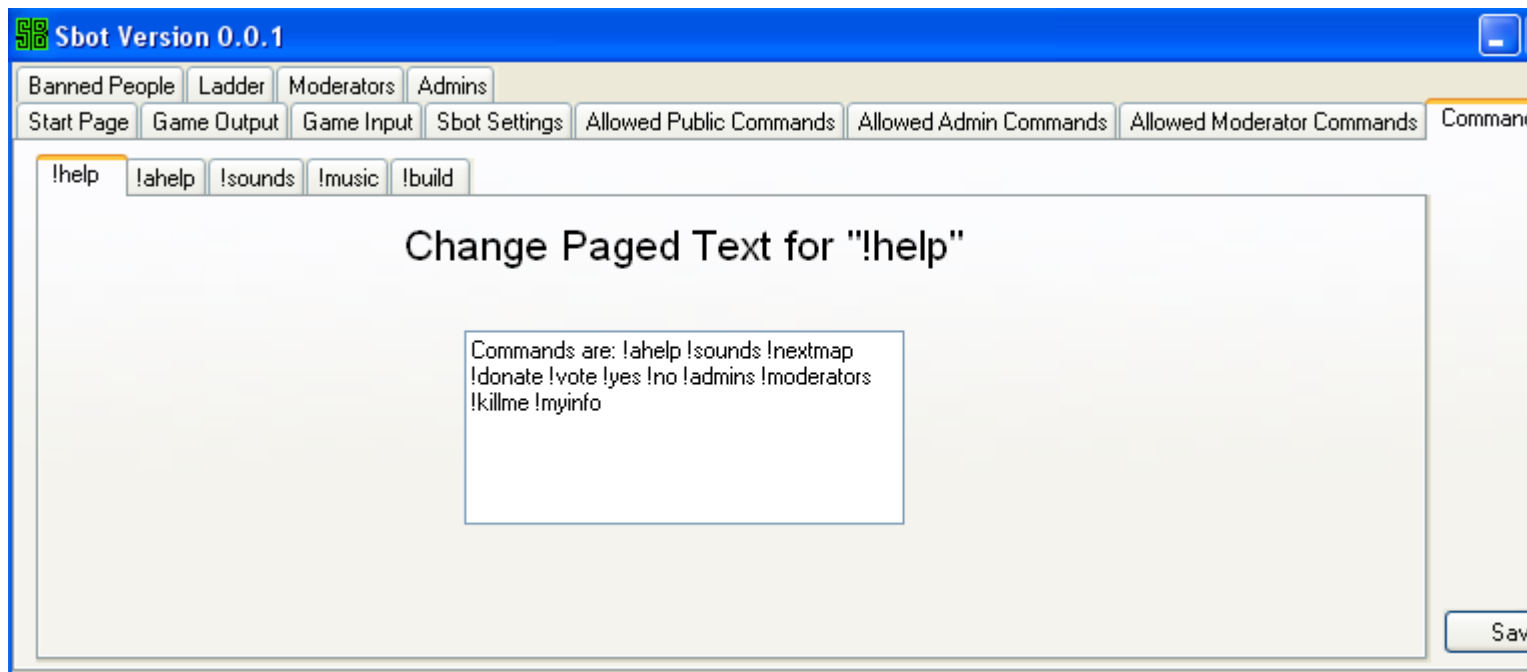
These are the Commands that only admins can use.

7) [7.png](#), downloaded 1783 times



These are the commands that only moderators can use.

8) [8.png](#), downloaded 1774 times



Here is where you can change the different options for each command. not all commands are done yet, not all commands will the e

9) [9.png](#), downloaded 1784 times



This is where you manage and update your banlist

10) [10.png](#), downloaded 1796 times

Sbot Version 0.0.1

Start Page

Ladder

Game Input

Sbot Settings

Allowed Public Commands

Allowed Admin Commands

Allowed Moderator Commands

Command

Banned People

Moderators

Admins

Ladder

Order by?

Kills

Score

Overall K.D

Buildings Destroyed

Recomendations

Kill rate

1. TestPerson (100 Kills)

This is where you manage and update your servers private ladder

Page 6 of 6 ---- Generated from [Command and Conquer: Renegade Official Forums](#)