

---

Subject: Photoshop 7.0 not working

Posted by [slosha](#) on Sun, 01 Feb 2009 08:26:07 GMT

[View Forum Message](#) <> [Reply to Message](#)

---

Coming upon loading (specifics in ss) i get this message that photoshop is no longer working. i uninstalled it and reinstalled it and it still does this. it may be something with my computer. i have also restarted my computer. what is going on here?

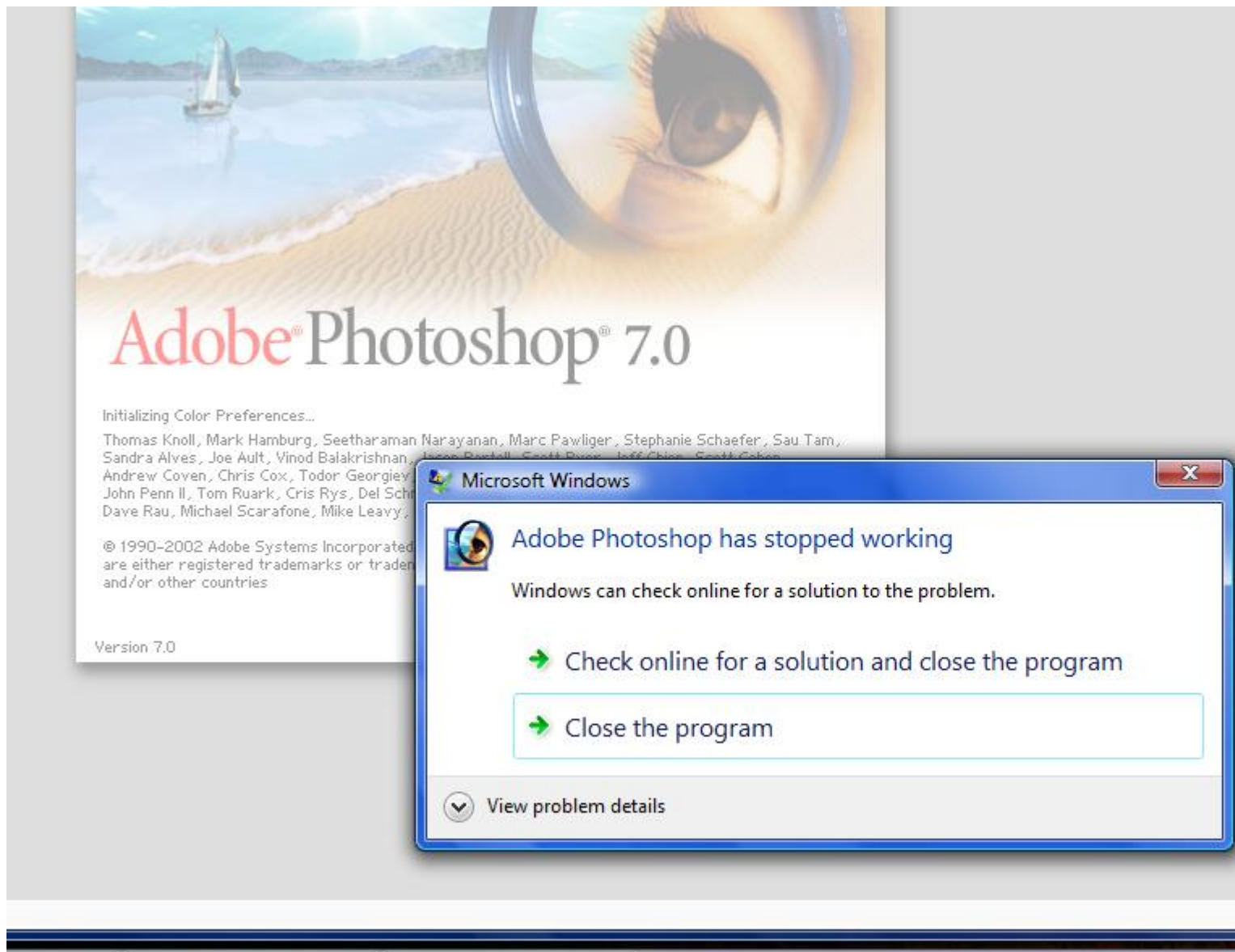
Here are screen shots providing all the information i can give. photoshop is the key element to all my customization of renegade, and i don't want to go to walmart and buy photoshop.

---

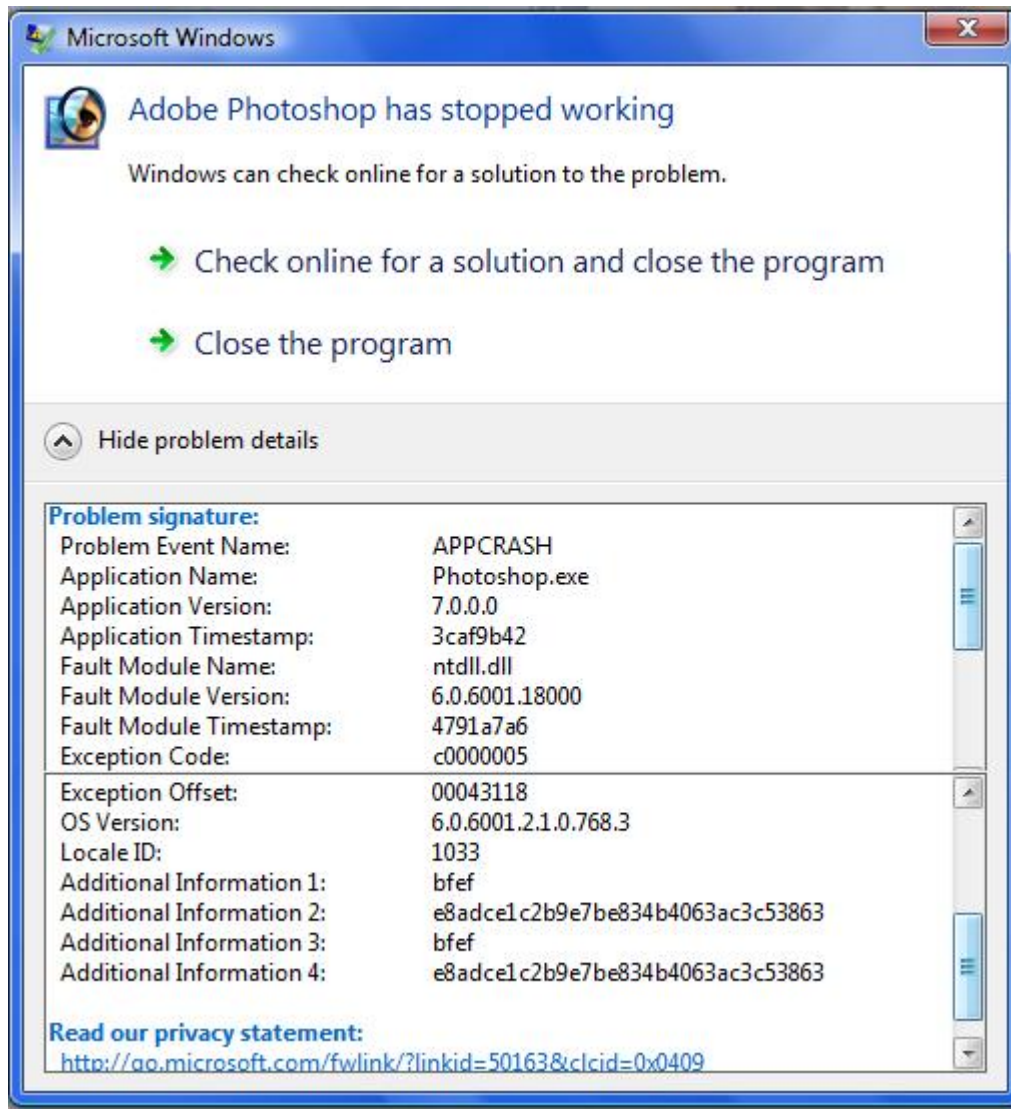
### File Attachments

1) [ss.jpg](#), downloaded 232 times

---



2) [ss2.jpg](#), downloaded 238 times



---

Subject: Re: Photoshop 7.0 not working  
Posted by [Goztow](#) on Sun, 01 Feb 2009 08:33:35 GMT  
[View Forum Message](#) <> [Reply to Message](#)

You are running it in admin mode, right?

---

Subject: Re: Photoshop 7.0 not working  
Posted by [\\_SSnipe\\_](#) on Sun, 01 Feb 2009 08:36:08 GMT  
[View Forum Message](#) <> [Reply to Message](#)

Or tried the compatibility mode?

idk if this works but once saved me

check to see if your have a service running thats called flex  
licenceing or something with licence in it

---

---

Subject: Re: Photoshop 7.0 not working  
Posted by [slosha](#) on Sun, 01 Feb 2009 08:36:23 GMT  
[View Forum Message](#) <> [Reply to Message](#)

---

yeah i'm the only user on this computer.. it just started doing this. it was working fine last time i  
turned it on :S

---

---

Subject: Re: Photoshop 7.0 not working  
Posted by [slosha](#) on Sun, 01 Feb 2009 08:43:46 GMT  
[View Forum Message](#) <> [Reply to Message](#)

---

SSnipe wrote on Sun, 01 February 2009 02:36Or tryed the compatibility mode?

idk if this works but once saved me

check to see if your have a service running thats called flex  
licenceing or something with licence in it

i changed it to Windows Service Pack 2 and it still doesn't work.

---

---

Subject: Re: Photoshop 7.0 not working  
Posted by [\\_SSnipe\\_](#) on Sun, 01 Feb 2009 08:50:03 GMT  
[View Forum Message](#) <> [Reply to Message](#)

---

- 1)check to see if you can answer my other question
  - 2)what have you done to that program
  - 3)what have you installed/unistallediin your pc the past day
  - 4)what else have you chnaged
  - 5)try to update the program?
- 

---

Subject: Re: Photoshop 7.0 not working  
Posted by [slosha](#) on Sun, 01 Feb 2009 08:55:00 GMT  
[View Forum Message](#) <> [Reply to Message](#)

---

- SSnipe wrote on Sun, 01 February 2009 02:501)check to see if you can answer my other question
- 2)what have you done to that program
  - 3)what have you installed/unistallediin your pc the past day
  - 4)what else have you chnaged

5)try to update the program?

where do i find that liscense thing?

2) i changed it to XP SP2 & Windows 2000

3)nothing except photoshop today when it stopped working

4)nothing)

5)How? I can't open it.

---

Subject: Re: Photoshop 7.0 not working

Posted by [\\_SSnipe\\_](#) on Sun, 01 Feb 2009 09:02:13 GMT

[View Forum Message](#) <> [Reply to Message](#)

---

1.1) service list

2.1)try to uncheck it to change it back since its work before

5.1) should be adobe updater

also go to services list

(Control panel > Administrative Tools > Services)

Look for anything with the word license in it and right click and start it

do the same with ANY adobe programs or servcies

so lets say one said " adobe photoshop service" make sure its running right click and hit start

---

Subject: Re: Photoshop 7.0 not working

Posted by [CarrierII](#) on Sun, 01 Feb 2009 09:31:29 GMT

[View Forum Message](#) <> [Reply to Message](#)

---

This belongs in Technical Support --> Other.

Moved.

---

Subject: Re: Photoshop 7.0 not working

Posted by [slosha](#) on Mon, 02 Feb 2009 02:21:11 GMT

[View Forum Message](#) <> [Reply to Message](#)

---

SSnipe wrote on Sun, 01 February 2009 03:021.1) service list

2.1)try to uncheck it to change it back since its work before

5.1) should be adobe updater

also go to services list  
(Control panel > Administrative Tools > Services)  
Look for anything with the word license in it and right click and start it

do the same with ANY adobe programs or servcies

so lets say one said " adobe photoshop service" make sure its running right click and hit start

i got nothin

---

---

Subject: Re: Photoshop 7.0 not working  
Posted by [\\_SSnipe\\_](#) on Mon, 02 Feb 2009 03:47:32 GMT  
[View Forum Message](#) <> [Reply to Message](#)

---

did u reinstall it?

---

---

Subject: Re: Photoshop 7.0 not working  
Posted by [slosa](#) on Mon, 02 Feb 2009 04:01:17 GMT  
[View Forum Message](#) <> [Reply to Message](#)

---

yeah and now its to the point where i cant get past the part where i type in my serial.. it just disappears and the background of the wizard is still there

---

---

Subject: Re: Photoshop 7.0 not working  
Posted by [\\_SSnipe\\_](#) on Mon, 02 Feb 2009 06:09:08 GMT  
[View Forum Message](#) <> [Reply to Message](#)

---

ummmm let me try to look this up

---

---

Subject: Re: Photoshop 7.0 not working  
Posted by [slosa](#) on Mon, 02 Feb 2009 22:04:29 GMT  
[View Forum Message](#) <> [Reply to Message](#)

---

SSnipe wrote on Mon, 02 February 2009 00:09ummmm let me try to look this up

I think I get stuck installing is because I dragged the window to the left so the next dialog popped up off the screen lol..

still not working after deleted the whole photoshop program file & full install.

---

---

Subject: Re: Photoshop 7.0 not working  
Posted by [slosha](#) on Tue, 03 Feb 2009 00:41:59 GMT  
[View Forum Message](#) <> [Reply to Message](#)

---

magic.. problem solved.. idk what i did but i can continue to use photoshop just fine.. thx for the help

now i can get to work on more ren stuff tiger stripe weaps ftw!

---