
Subject: Renguard Not Connecting :(
Posted by [burner_2k4](#) on Tue, 20 Mar 2007 21:07:35 GMT
[View Forum Message](#) <> [Reply to Message](#)

Hi i have been using renguard for ages now and never had a problem with it. in recent weeks tho i am getting the renguard window with a white screen and the message:

[21:00] Trying to connect to server #1...Connected
[21:00] Secure link established.

but that is it. i have not altered any settings and the problem is also occuring on my other computer connected through the same wireless router. I have added the ports:

TCP Ports
3840, 4005, 4808, 4810, 4995, 7000-7002
UDP Ports
1234-1237

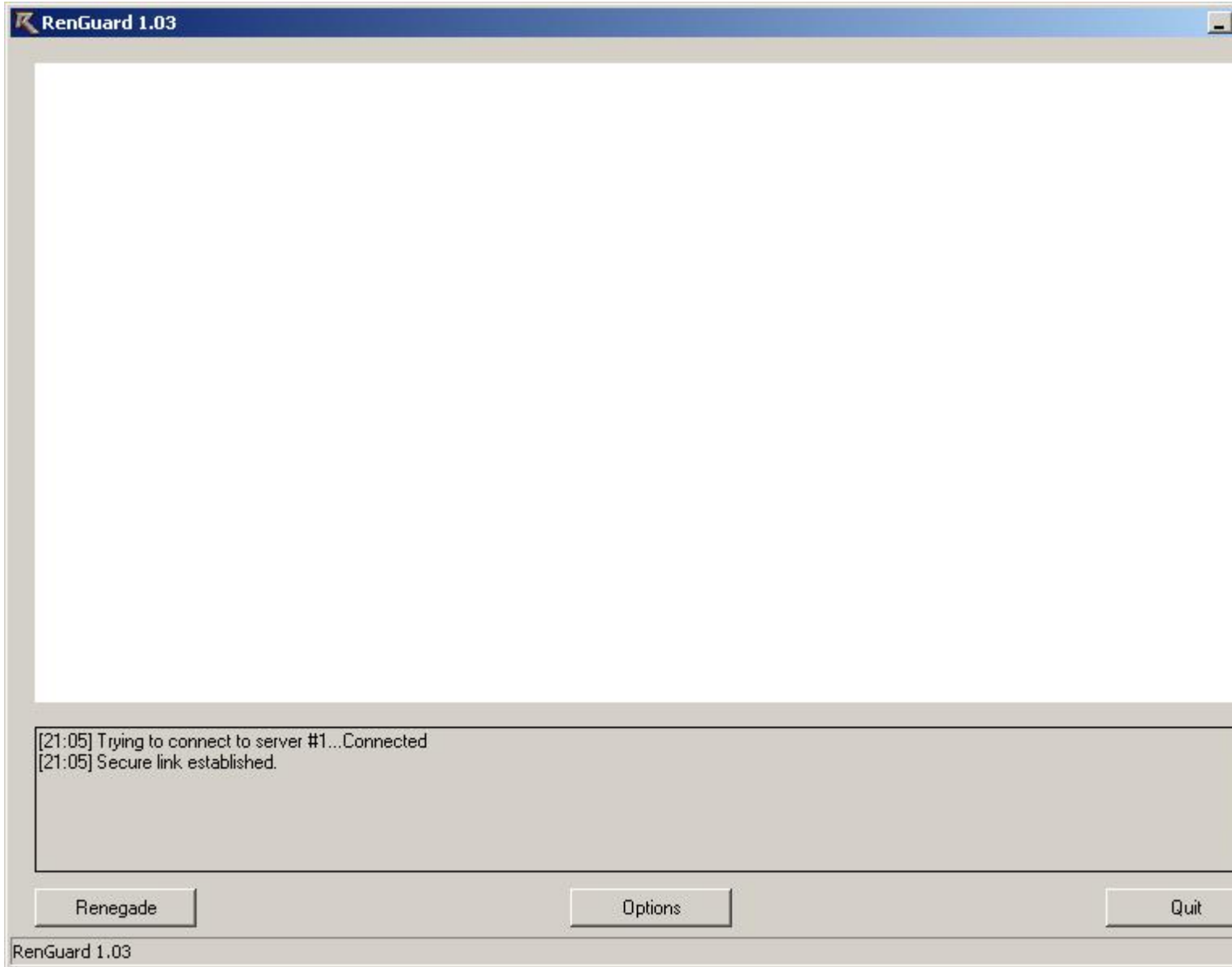
to the router, but still nothing. The problem only seems to occur during 'peak' evening times (between 6pm ish and 10:30pm)

i was wondering if anyone else had had any similar problems or if anyone knows of a solution because its got beyond my capabilities

thanks
burner2k4

File Attachments

1) [annoyance.JPG](#), downloaded 611 times



Subject: Re: Renguard Not Connecting :(
Posted by [Ryu](#) on Wed, 21 Mar 2007 07:25:47 GMT
[View Forum Message](#) <> [Reply to Message](#)

Tryed port forwarding? I haven't used a router so I wouldn't exactly know it that would work.

Also, have you installed any new firewall(s)?

Subject: Re: Renguard Not Connecting :(
Posted by [cmatt42](#) on Wed, 21 Mar 2007 19:53:26 GMT
[View Forum Message](#) <> [Reply to Message](#)

Alex wrote on Wed, 21 March 2007 01:25 Tried port forwarding? I haven't used a router so I wouldn't exactly know it that would work.
You're not helping him by not reading his entire post and suggesting something he said he has already done.

Subject: Re: Renguard Not Connecting :(
Posted by [burner_2k4](#) on Wed, 21 Mar 2007 20:06:37 GMT
[View Forum Message](#) <> [Reply to Message](#)

thats for the replies, yes i have tried forwarding the ports but nothing happened. i have reason to believe it is Tiscali broadbands so called 'fair usage' policy (how you measure fair is clearly unknown) and apparently playing renegade is using the same amount of bandwidth as if i was constantly downloading torrents... yes, you read that right.

so im currently going down the whole complaints and breach of contract saga.

the morale to the story - AVOID TISCALI BROADBAND AT ALL COSTS!

p.s. any good ISPs out there that dont have this restriction?

cheers
burner2k4

Subject: Re: Renguard Not Connecting :(
Posted by [Ryu](#) on Wed, 21 Mar 2007 22:12:25 GMT
[View Forum Message](#) <> [Reply to Message](#)

cmatt42 wrote on Wed, 21 March 2007 13:53 Alex wrote on Wed, 21 March 2007 01:25 Tried port forwarding? I haven't used a router so I wouldn't exactly know it that would work.
You're not helping him by not reading his entire post and suggesting something he said he has already done.

Scim reading is a horrible curse.

Burner.. Are you using a proxy by any chance?

For the love of god, Avoid Blue Yonder, a.k.a Virgin Media, My upload speed is horrible. I should have atleast 150kbps upload.

<http://bethere.co.uk> is the best iv'e seen in the UK.

Subject: Re: Renguard Not Connecting :(
Posted by [jnz](#) on Thu, 22 Mar 2007 00:17:19 GMT

[View Forum Message](#) <> [Reply to Message](#)

BT is the way forward , AVOID AOL at all costs. DO NOT GET AOL.

Subject: Re: Renguard Not Connecting :(
Posted by [Renx](#) on Thu, 22 Mar 2007 16:50:17 GMT

[View Forum Message](#) <> [Reply to Message](#)

As far as I could see RenGuard uses a random port to connect, somewhere between 2500-3500.
At least for me.
